



***SECURITY WINDOW SCREENS***

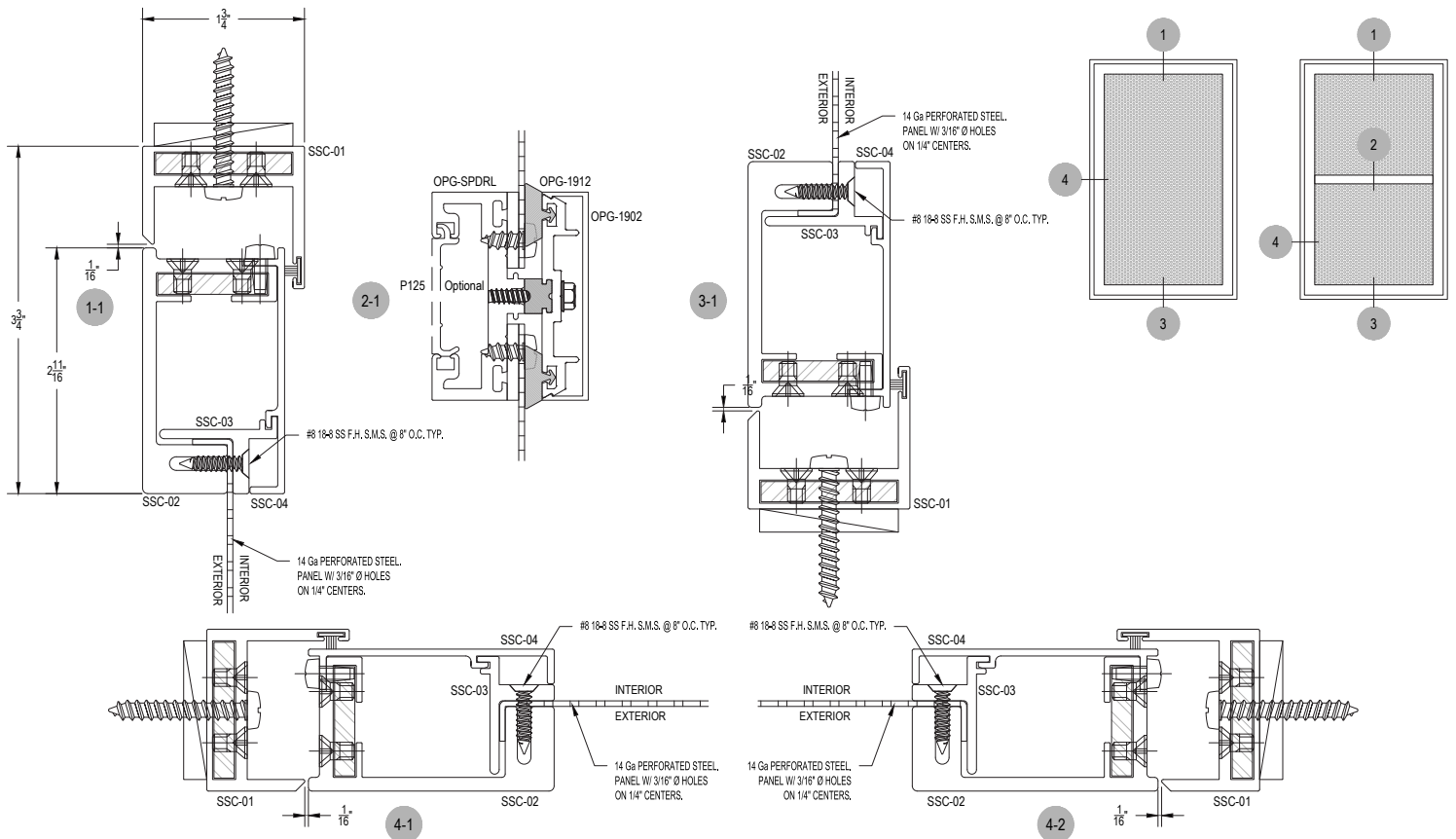
**arcadia**  






# Intruder 175 Series

1 3/4" Heavy Commercial Security Screen  
Operable  
Level 6



## Product Standards and Guide Specifications

1995 CSI SECTION 08585 Security Screens  
2004 CSI SECTION 08 5666 Security Screens

### Part 1 – General

#### 1.01 Summary

- A. Section includes:
  1. Aluminum Operable Security Screens
- B. Related Sections:

#### 1.02 References

- A. American Architectural Manufacturers Association (AAMA)
- B. American Society for Testing and Materials (ASTM)
- C. Aluminum Association (AA)

#### 1.03 System Description

- A. General: In addition to requirements shown or specified, comply with:
- B. Design Requirements: Arcadia Intruder 175 Series designed to fit any fixed or operable Arcadia window product. Adams Rite 1841 dead bolt locking hardware with throw bolt for 3 point locking system
- C. Performance Requirements:
  1. Screens to meet a minimum Level 6 Security Level

#### 1.04 Quality Assurance

- A. Single Source Responsibility:
  1. Obtain Security Screens, entrances, storefronts, ribbon walls, window walls, curtain walls, window systems, and finish through one source from a single manufacturer.

Warranty
- B. 2. System shall be warranted against failure and/or deterioration of metals due to manufacturing process for a period of two (2) years.

### Part 2 – Products

#### 2.01 Manufacturers

- A. Acceptable Manufacturers:
  1. Arcadia, Inc., 3225 East Washington Blvd., Vernon, CA. Telephone 323/269-7300, Fax 323/269-7390.
- B. Acceptable Products:
  1. Arcadia, Inc., Intruder 175 Series

#### 2.02 Framing Materials and Accessories

- A. Framing members, transition members, mullions, adaptors, and mounting: Extruded 6063-T6 aluminum alloy (ASTM B221 – Alloy G.S. 10a T6). Minimum .125" wall thickness on all framing members and .090" on all sash extrusions.

- B. Perforated steel screen infill to be 14-gauge powder coated steel with an option for any type of woven mesh specified.
- C. Screws, fastening devices, and internal components: Aluminum, stainless steel, or zinc-plated steel in accordance with ASTM.A-164. Perimeter anchors shall be aluminum or steel, providing the steel is properly isolated from aluminum. Provide tamper proof fasteners where necessary

#### 2.03 Finish

- A. Finish all exposed areas of aluminum and components as indicated.
  1. An Architectural Class II or I color anodic coating conforming with AA-M12C22A34/AA-M12C22A44.
    - a. Anodized finish color shall be Colornodic \_\_\_\_\_. (AB1 Light Champagne, AB2 Champagne, AB3 Light Bronze, AB4 Medium Bronze, AB5 Standard Medium Bronze, AB6 Dark Bronze, AB7 Standard Dark Bronze, AB8 Black, AG2 Gold.)
  - (or) 1. An Architectural Class II and I anodic coating conforming with AA-M12C22A31/AA-M12C22A41.
    - a. Anodize finish color shall be Colornodic \_\_\_\_\_ (#11 Clear)
  - (or) 1. Fluorocarbon Coating: AAMA 2605.2.
    - a. Resin: 70% PVDF Kynar 500/Hylar 5000.
    - b. Color: As selected by Architect.

#### 2.04 System Fabrication

- A. The perforated panel shall be attached between the main frame and interlocking cover plate with tamper resistant screws 3 inches on center maximum
- B. There shall be no exposed fasteners at perimeter sections.

### Part 3 – Execution

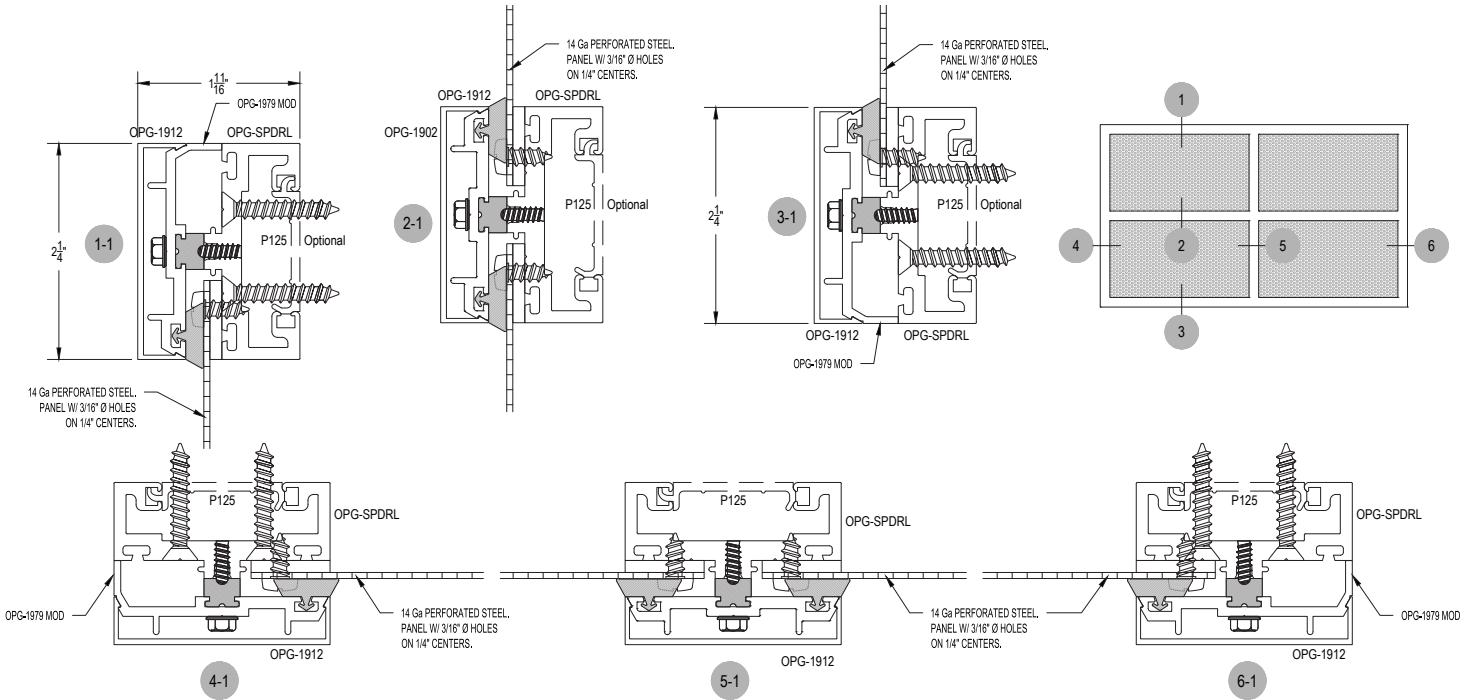
#### 3.01 Examinations

- A. Examine conditions and verify substrate conditions are acceptable for product installation.

#### 3.02 Installation

- A. Install in accordance with approved shop drawings and manufacturers installation instructions.

**END OF SECTION**



## Product Standards and Guide Specifications

1995 CSI SECTION 08585 Security Screens  
2004 CSI SECTION 08 5666 Security Screens

### Part 1 – General

#### 1.01 Summary

- A. Section includes:
  1. Aluminum Surface Mount Security Screens
- B. Related Sections:

#### 1.02 References

- A. American Architectural Manufacturers Association (AAMA)
- B. American Society for Testing and Materials (ASTM)
- C. Aluminum Association (AA)

#### 1.03 System Description

- A. General: In addition to requirements shown or specified, comply with:
- B. Design Requirements: Arcadia Intruder 168 Series designed to fit any fixed or operable Arcadia window product.
- C. Performance Requirements:
  1. Screens to meet a minimum Level 6 Security Level

#### 1.04 Quality Assurance

- A. Single Source Responsibility:
  1. Obtain Security Screens, entrances, storefronts, ribbon walls, window walls, curtain walls, window systems, and finish through one source from a single manufacturer.
- Warranty
- B. 2. System shall be warranted against failure and/or deterioration of metals due to manufacturing process for a period of two (2) years.

### Part 2 – Products

#### 2.01 Manufacturers

- A. Acceptable Manufacturers:
  1. Arcadia, Inc., 3225 East Washington Blvd., Vernon, CA. Telephone 323/269-7300, Fax 323/269-7390.
- B. Acceptable Products:
  1. Arcadia, Inc., Intruder 168 Series

#### 2.02 Framing Materials and Accessories

- A. Framing members, transition members, mullions, adaptors, and mounting: Extruded 6063-T6 aluminum alloy (ASTM B221 – Alloy G.S. 10a T6). Minimum .125" wall thickness on all framing members and .090" on all sash extrusions.

- B. Perforated steel screen infill to be 14-gauge powder coated steel with an option for any type of woven mesh specified.
- C. Screws, fastening devices, and internal components: Aluminum, stainless steel, or zinc-plated steel in accordance with ASTM.A-164. Perimeter anchors shall be aluminum or steel, providing the steel is properly isolated from aluminum. Provide tamper proof fasteners where necessary

#### 2.03 Finish

- A. Finish all exposed areas of aluminum and components as indicated.
  1. An Architectural Class II or I color anodic coating conforming with AA-M12C22A34/AA-M12C22A44.
    - a. Anodized finish color shall be Colormodic \_\_\_\_\_ (AB1 Light Champagne, AB2 Champagne, AB3 Light Bronze, AB4 Medium Bronze, AB5 Standard Medium Bronze, AB6 Dark Bronze, AB7 Standard Dark Bronze, AB8 Black, AG2 Gold.)
  - (or) 1. An Architectural Class II and I anodic coating conforming with AA-M12C22A31/AA-M12C22A41.
    - a. Anodize finish color shall be Colormodic \_\_\_\_\_ (#11 Clear)
  - (or) 1. Fluorocarbon Coating: AAMA 2605.2.
    - a. Resin: 70% PVDF Kynar 500/Hylar 5000.
    - b. Color: As selected by Architect.

#### 2.04 System Fabrication

- A. The perforated panel shall be attached between the main frame and interlocking cover plate with tamper resistant screws 3 inches on center maximum
- B. There shall be no exposed fasteners at perimeter sections.

### Part 3 – Execution

#### 3.01 Examinations

- A. Examine conditions and verify substrate conditions are acceptable for product installation.

#### 3.02 Installation

- A. Install in accordance with approved shop drawings and manufacturers installation instructions.

END OF SECTION



Corporate Location

2301 East Vernon Avenue  
Vernon, CA 90058

Ph 323-269-7300

Fx 323-269-7390

info@arcadiainc.com

Washington Location

7830 S. 196th Street  
Kent, Washington 98032

Ph 425-869-7300

Fx 253-395-4234

Arizona Location

2510 West Geneva Drive  
Tempe, AZ 85282

Ph 602-437-2514

Fx 602-437-2515

New Mexico Location

4705 Mcleod Road N.E.  
Albuquerque, NM 87109

Ph 505-341-4222

Fx 505-341-4225

Nevada Location

1850 East Maule Avenue  
Las Vegas, NV 89119

Ph 702-798-7300

Fx 702-798-7305

Connecticut Location

60 Bonner Street  
Stamford, CT 06902

Ph 203-316-8000

Fx 203-316-8200

Hawaii Location

94-410 Uke'e Street, Bldg #A  
Waipahu, HI 96797

Ph 808-678-9700

Fx 808-676-8663

Northern California Location

2187 Alpine Way  
Hayward, CA 94545

Ph 510-783-4990

Fx 510-783-1149

Sacramento Location

2324 Del Monte Street  
Sacramento, CA 95691

Ph 916-375-1478

Fx 916-375-1523