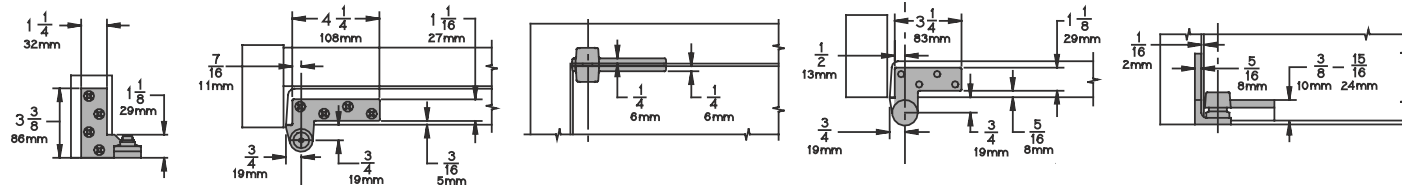


## 7212 3/4" Offset Pivot

- Handed
- Top, header mount
- Bottom, jamb mount
- Use with 1-3/4" minimum door thickness, with 1/8" bevel in 2"
- Maximum door load 200 pounds
- Vertical adjustment range 3/16", with positive locking

Optional 7212-7212V-7222 Intermediate Pivot (handed) for each additional 100 pounds or doors over 7'. See page A47.

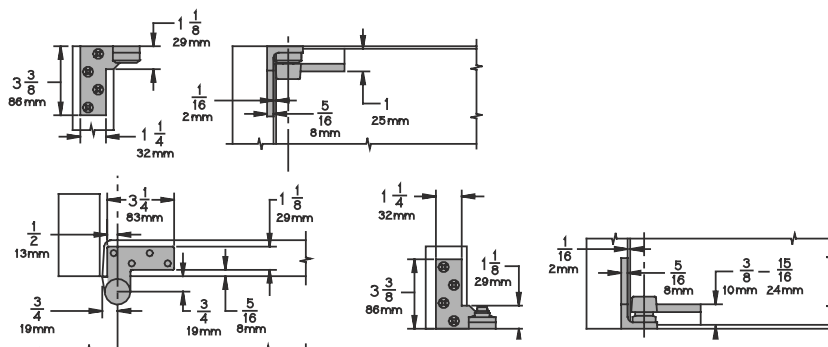
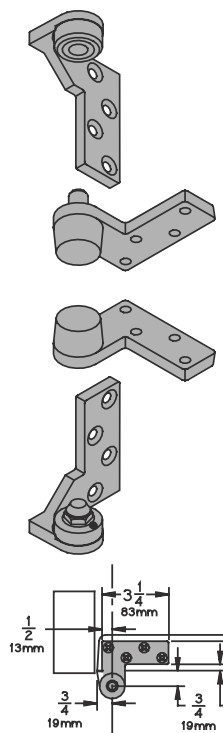
Meets ANSI/BHMA A156.4 C07131



## 7212V 3/4" Offset Pivot

- Handed
- Top, jamb mount
- Bottom, jamb mount
- Use with 1-3/4" minimum door thickness, with 1/8" bevel in 2"
- Maximum door load 200 pounds
- Vertical adjustment range 3/16", with positive locking

Optional 7212-7212V-7222 Intermediate Pivot (handed) for each additional 100 pounds or doors over 7'. See page A47.



### Plated Finishes *brass*

| US Number | US3 | US4 | US10 | US10B | US26 | US26D |
|-----------|-----|-----|------|-------|------|-------|
|-----------|-----|-----|------|-------|------|-------|

|             |     |     |     |     |     |     |
|-------------|-----|-----|-----|-----|-----|-----|
| BHMA Number | 605 | 606 | 612 | 613 | 625 | 626 |
|-------------|-----|-----|-----|-----|-----|-----|

### Painted Finishes *brass*

| US Number | SP4 | SP10 | SP28 | SP313 | SPBLK |
|-----------|-----|------|------|-------|-------|
|-----------|-----|------|------|-------|-------|

|             |     |     |     |     |     |
|-------------|-----|-----|-----|-----|-----|
| BHMA Number | 706 | 691 | 689 | 695 | 622 |
|-------------|-----|-----|-----|-----|-----|