

## Model 180

### Application

Full Mortise  
Non-handed

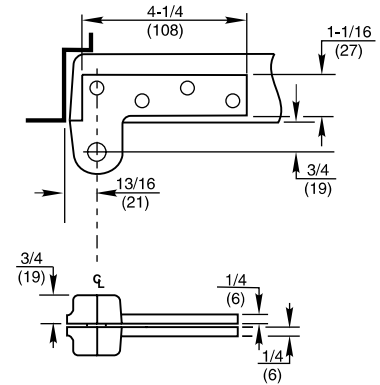


### Product Description & Features

- Standard top pivot for most offset pivot sets and floor closers
- Oil-impregnated sintered bronze bushing
- Non-ferrous base material
- Available for fire door assemblies (*ferrous material*) – specify F180 or FH180
- For 20-minute label suffix “-20” to the part number
- 3/4" (19mm) offset (*measured from centerline of pivot to face of door*)
- Available for 1-1/2" (38mm) offset
- Furnished with wood and machine screws
- Available with longer than standard pivot pins. Increments are 1/4" (6mm), 1/2" (13mm), 3/4" (19mm) only
- For extra wide or high traffic prefix "H"
  - H pivots have heavy-duty needle bearings
  - H Pivots available in 1-1/2" (38mm) offset

### Technical Information

Frame stop required



## Model 180 x 102

### Application

Full Mortise  
Non-handed



### Product Description & Features

- Special top pivot for doors in deep reveals or unusual door details where one leaf is too long for the normal door or frame portion
- Oil-impregnated sintered bronze bushings
- Non-ferrous base metal
- Available for 1-1/2" (38mm) offset
- May be inverted
- Furnished with wood and machine screws
- Available with longer than standard pivot pins. Increments are 1/4" (6mm), 1/2" (13mm), 3/4" (19mm) only

### Technical Information

Frame stop required

