

## Model 119

### Application

- Full Mortise
- Handed

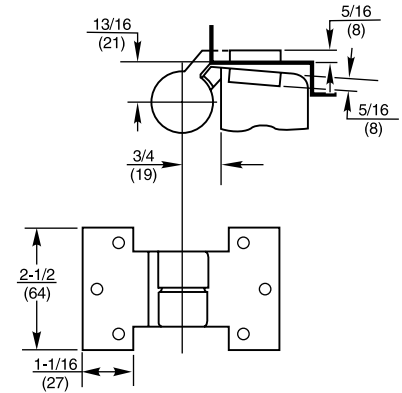
BHMA/ANSI NO: C07382



### Product Description & Features

- Not load-bearing
- Maintains door alignment
- Available 3/4" offset only
- Non-ferrous base material
- Recommended for use with Model 127 and 427 Floor Closers
- Furnished with wood and machine screws

### Technical Information



## Model M19/M190

### Application

- Full Mortise
- Handed

BHMA/ANSI NO: C07321/C07371



### Product Description & Features

- M19, bushing, not load-bearing
- M190, bearing, load-bearing
- Maintains door alignment
- Aids in installing floor closers and bottom pivots
- Non-ferrous base material
- 3/4" offset standard
- Available 1-1/2 (38mm) offset
- Available for fire door assemblies (*ferrous material*) specify FM19 or FM190
- On labeled for fire doors NFPA80 requires an intermediate pivot for every additional 30" (762mm) of door height over 60" (1542mm)
- For 20-minute label suffix "-20" to the part number
- Furnished with wood and machine screws

### Technical Information

