



ULT5000IP Series

Description: Impact - Sliding Doors

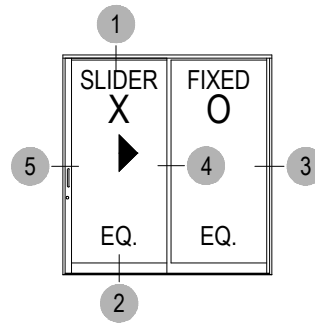
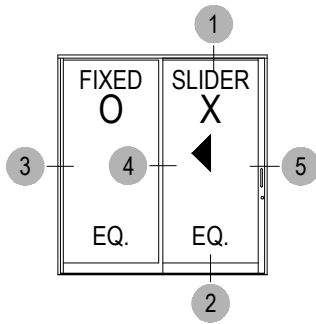
Function: Entrance

Detail: ALL

Scale: 3" = 1'-0"

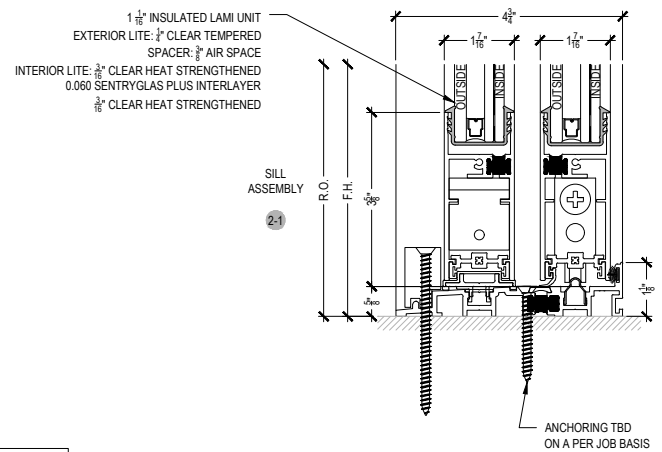
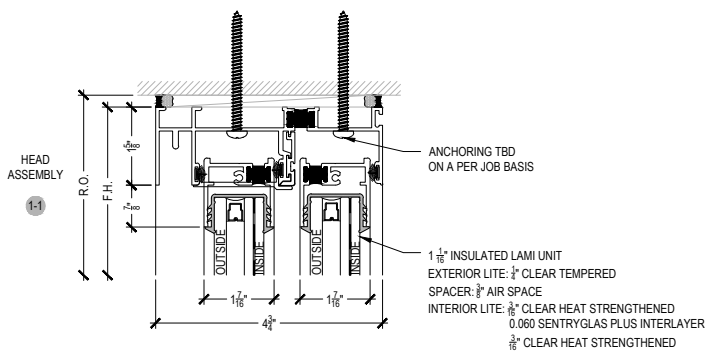
40 1/2" TO CENTER OF PULL
49 7/8" TO CENTER OF THUMBTURN

SHEET 1 OF 1



EXTERIOR ELEVATION
N.T.S.

Testing standards allow for unit interlayer maximum rip size after impact and cycle testing of system.
Use of this product must conform to the test report configurations and glazing used.
Arcadia recommends that when using this product a specified uniform overall glazing thickness of plus or minus .020" over entire area of unit.
This should include the center and edges of the unit. Insulated glass unit makeup must conform to the following minimum requirements: 1/4" tempered glass outboard lite, 3/8" air space, 3/16" heat strengthened, .060" SentryGlas® Plus interlayer, 3/16" heat strengthened laminated inboard lite. Refer to ASTM E 1996 for allowable substitutions.



NOTE:
AVAILABLE WITH INSIDE OR OUTSIDE SLIDING PANEL.
SCREENS AVAILABLE ON INSIDE ONLY.

