

Center Glazed

Side Load

AR450 Series

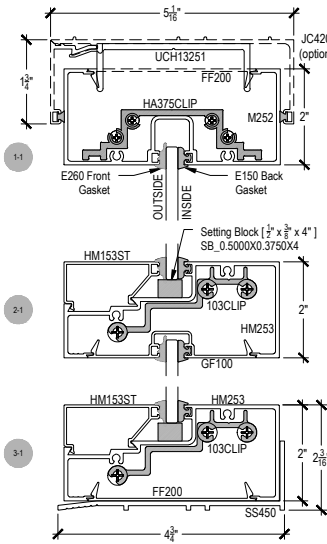
Description: 2" x 4 1/2" Center Glazed for 1/4" Glass

Function: Storefront

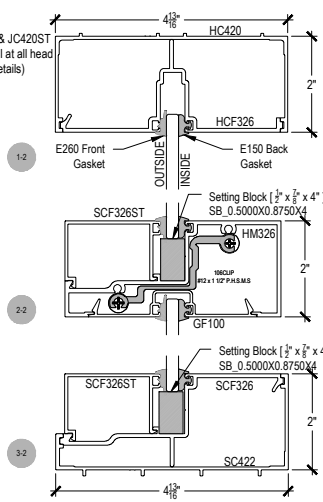
Detail: Horizontals

Scale: 3" = 1'-0"

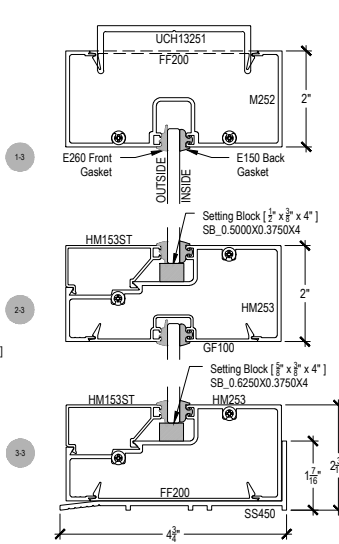
SHEET 1 OF 3



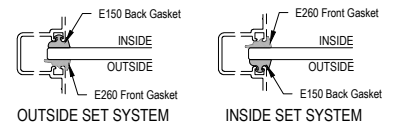
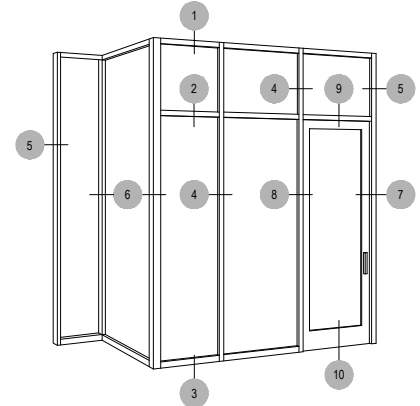
SHEAR BLOCK
OUTSIDE SET



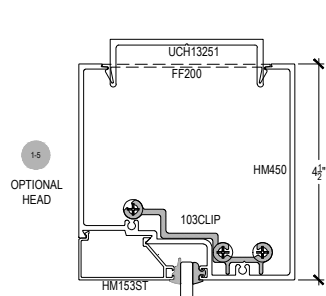
COMPENSATING STICK
OUTSIDE SET



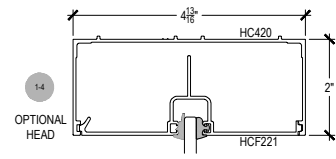
SCREW SPLINE
OUTSIDE SET



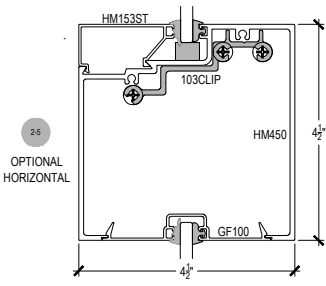
GASKET PLACEMENT
FOR INSIDE/OUTSIDE
SET SYSTEMS



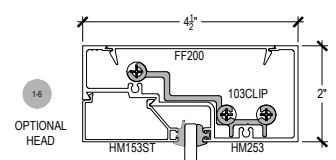
OPTIONAL
HEAD



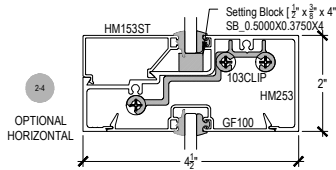
OPTIONAL
HEAD



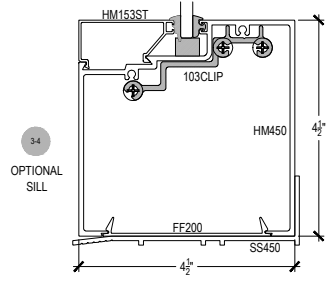
OPTIONAL
HORIZONTAL



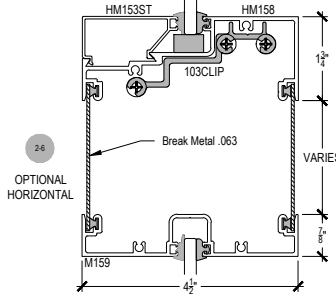
OPTIONAL
HEAD



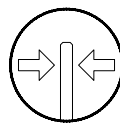
OPTIONAL
HORIZONTAL



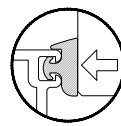
OPTIONAL
SILL



OPTIONAL
HORIZONTAL



Center Glass



Side Load

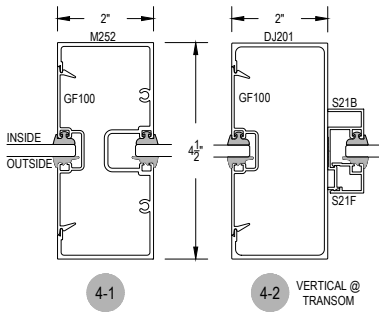
AR450 Series

Description: 2" x 4 1/2" Center Glazed for 1/4" Glass

Function: Storefront

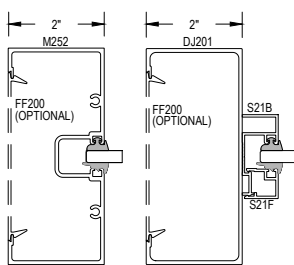
Detail: Verticals

Scale: 3" = 1'-0"



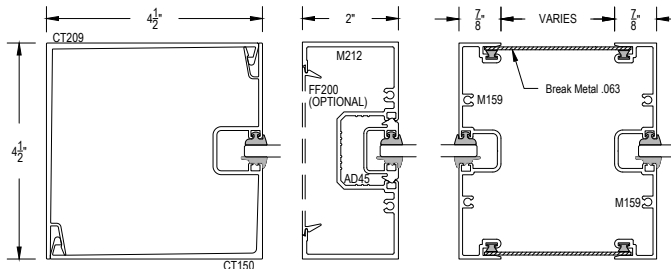
4-1

4-2 VERTICAL @ TRANSOM



5-1

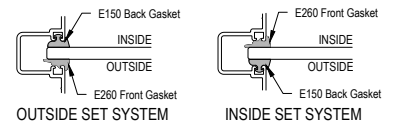
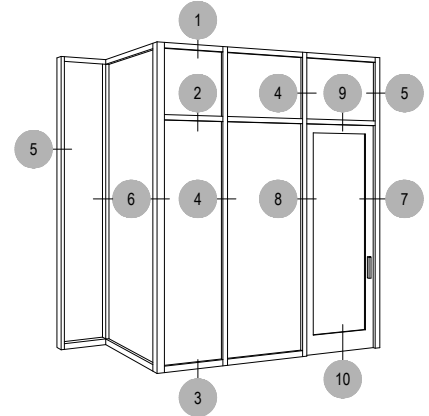
5-2 JAMB @ TRANSOM



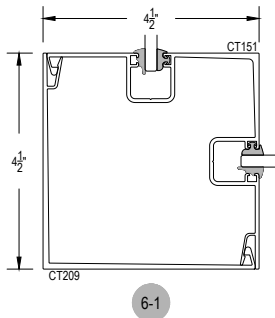
5-3

5-4

5-5

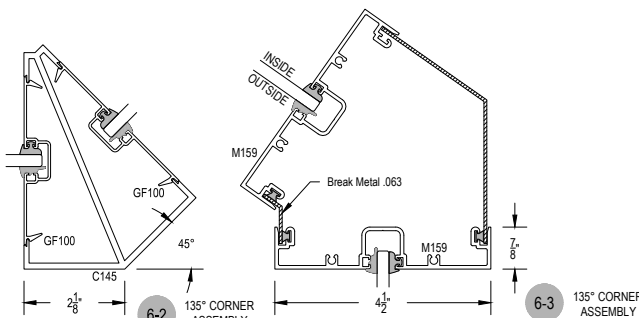


GASKET PLACEMENT FOR INSIDE/OUTSIDE SET SYSTEMS



6-1

90° CORNER ASSEMBLY

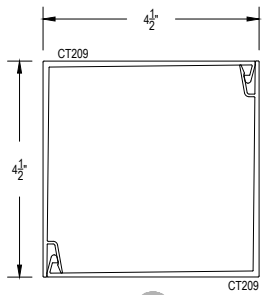


6-2

135° CORNER ASSEMBLY

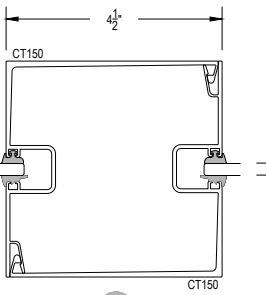
6-3

135° CORNER ASSEMBLY



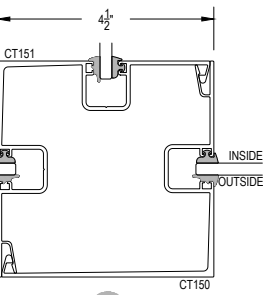
6-4

SPECIAL ASSEMBLY



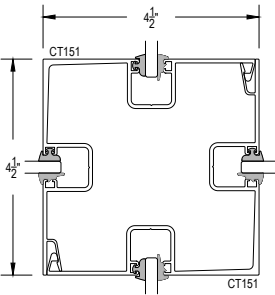
6-5

SPECIAL ASSEMBLY



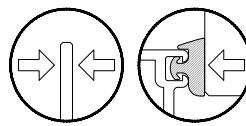
6-6

SPECIAL ASSEMBLY



6-7

SPECIAL ASSEMBLY



AR450 Series

Description: 2" x 4 1/2" Center Glazed for 1/4" Glass

Function: Storefront

Detail: Doors

Scale: 3" = 1'-0"

SHEET 3 OF 3

