

# AR450+ Series

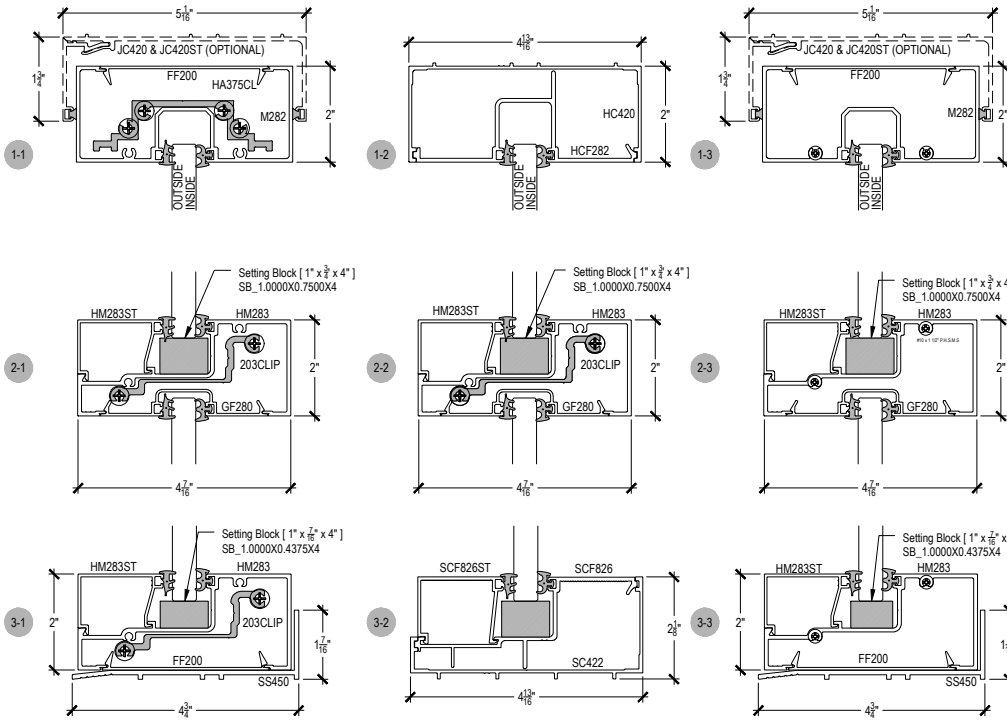
Description: 2" X 4 1/2" Center Glazed 3/8", 1/2", 9/16", 5/8"

Function: Storefront

Detail: Horizontals

Scale: 3" = 1'-0"

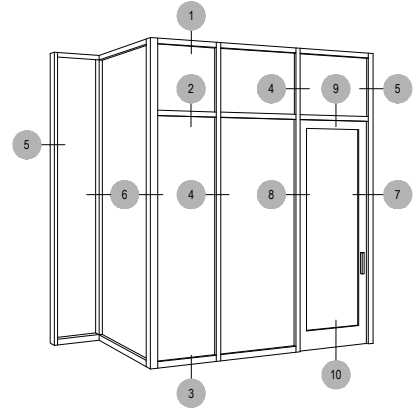
SHEET 1 OF 3



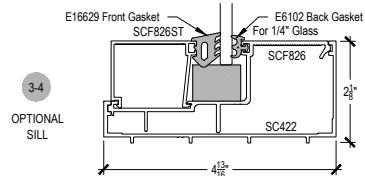
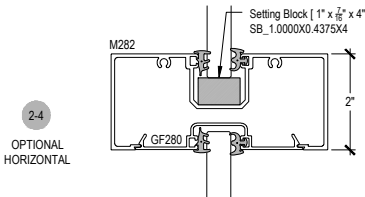
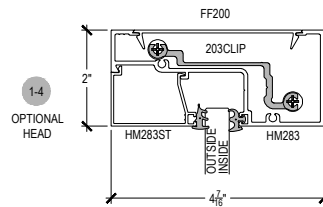
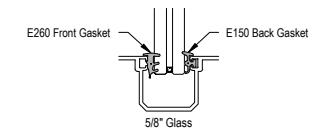
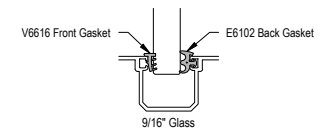
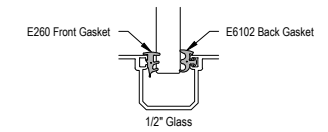
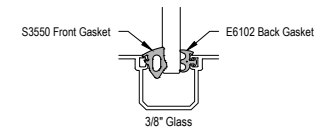
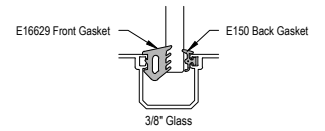
SHEAR BLOCK  
OUTSIDE SET

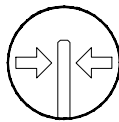
COMPENSATING STICK  
OUTSIDE SET

SCREW SPLINE  
OUTSIDE SET

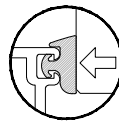


NOTE: GLASS THICKNESSES MAY VARY,  
CUSTOMER TO CHECK WITH ACTUAL GLASS.





Center Glazed



Side Load

# AR450+ Series

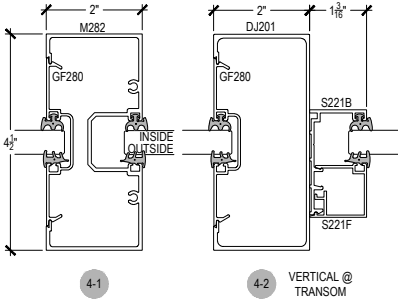
Description: 2" X 4 1/2" Center Glazed 3/8", 1/2", 9/16", 5/8"

Function: Storefront

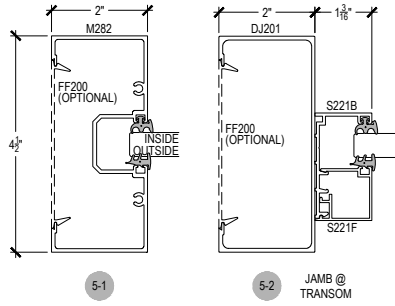
Detail: Verticals

Scale: 3" = 1'-0"

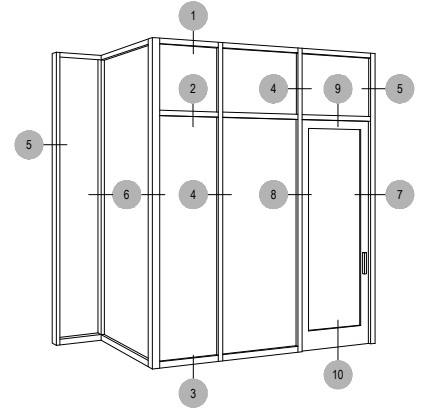
SHEET 2 OF 3



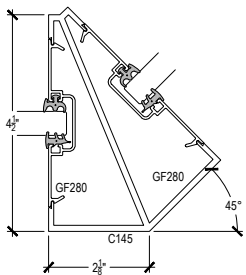
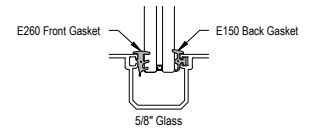
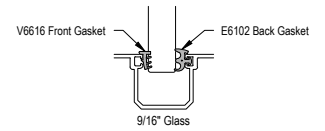
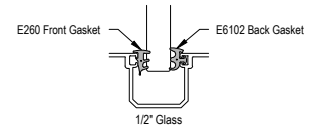
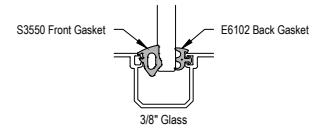
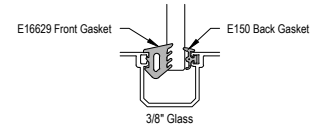
VERTICAL @ TRANSOM



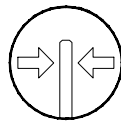
JAMB @ TRANSOM



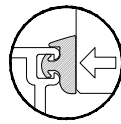
NOTE: GLASS THICKNESSES MAY VARY, CUSTOMER TO CHECK WITH ACTUAL GLASS.



6-1 135° CORNER ASSEMBLY



Center Glazed



Side Load

# AR450+ Series

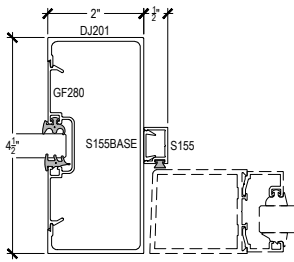
Description: 2" X 4 1/2" Center Glazed 3/8", 1/2", 9/16", 5/8"

Function: Storefront

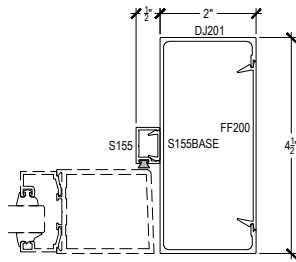
Detail: Doors

Scale: 3" = 1'-0"

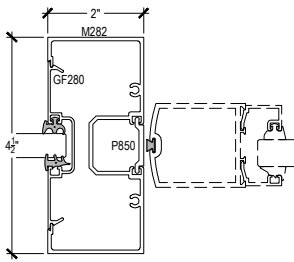
SHEET 3 OF 3



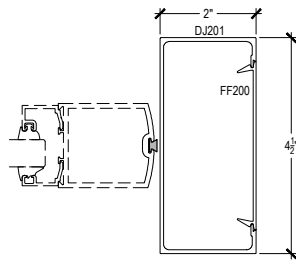
8-1 VERTICAL @ OFFSET DOOR



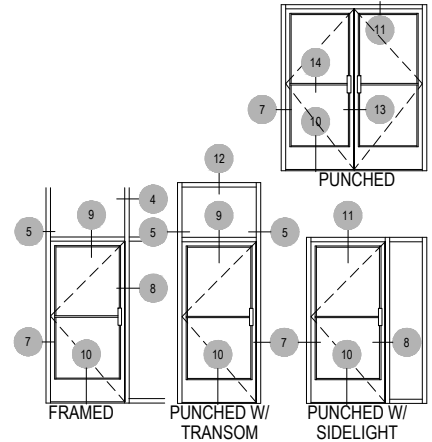
7-1 JAMB @ OFFSET DOOR



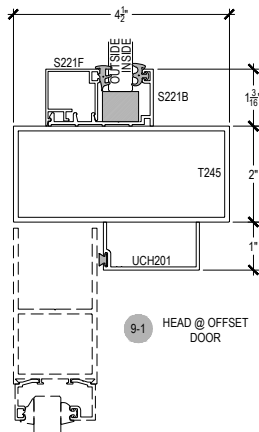
8-2 VERTICAL @ OFFSET DOOR



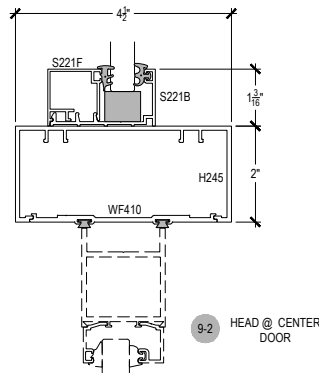
7-2 JAMB @ CENTER DOOR



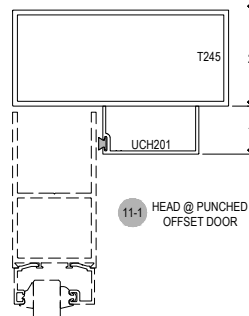
NOTE: GLASS THICKNESSES MAY VARY, CUSTOMER TO CHECK WITH ACTUAL GLASS.



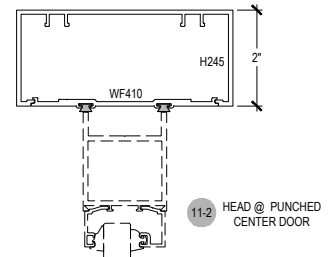
9-1 HEAD @ OFFSET DOOR



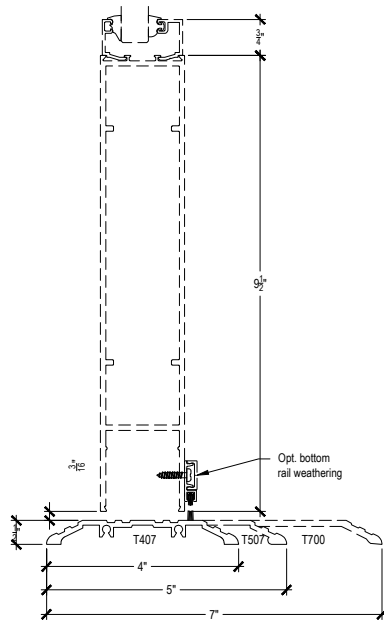
9-2 HEAD @ CENTER DOOR



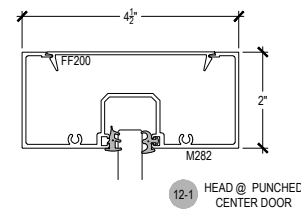
11-1 HEAD @ PUNCHED OFFSET DOOR



11-2 HEAD @ PUNCHED CENTER DOOR



10-1 10-2 10-3



12-1 HEAD @ PUNCHED CENTER DOOR