

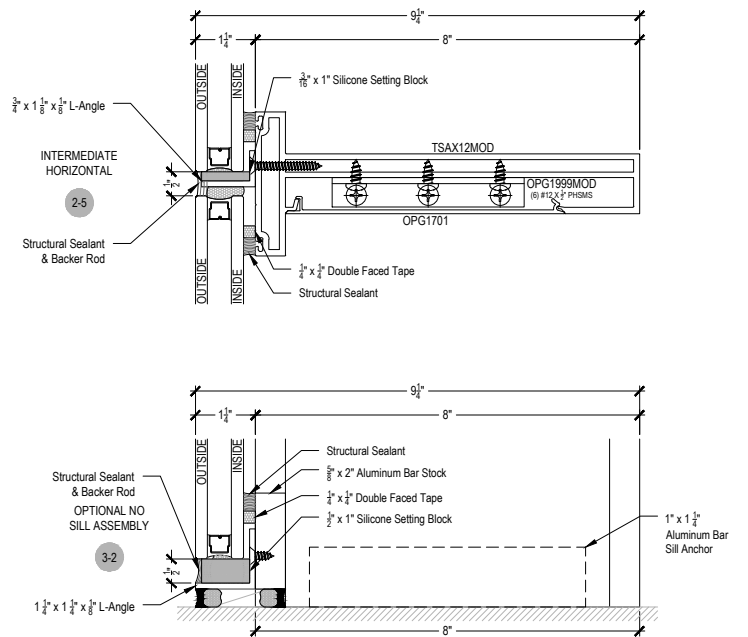
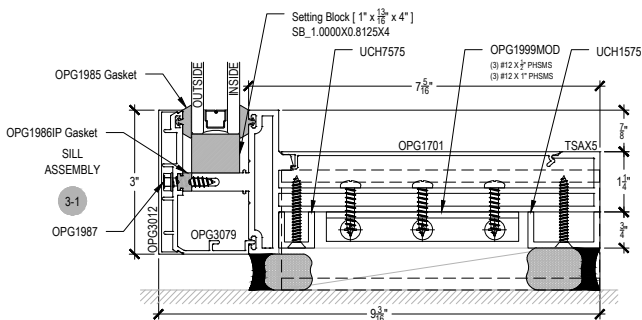
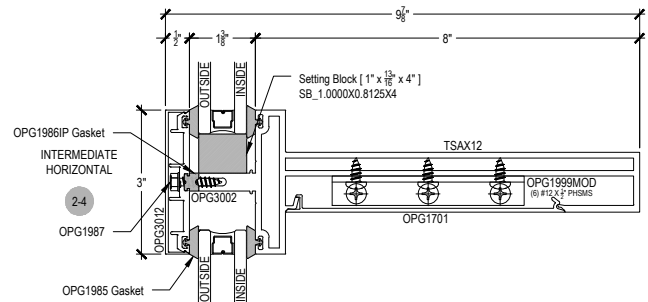
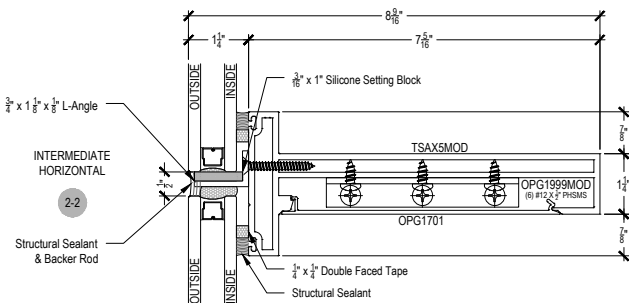
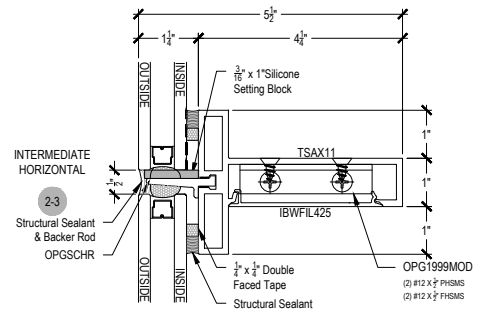
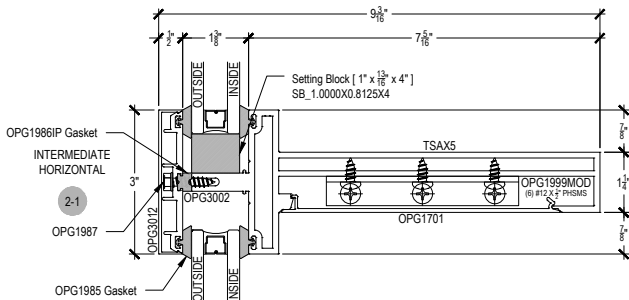
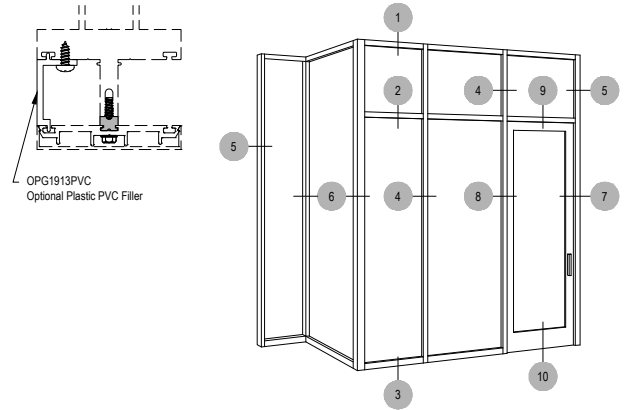
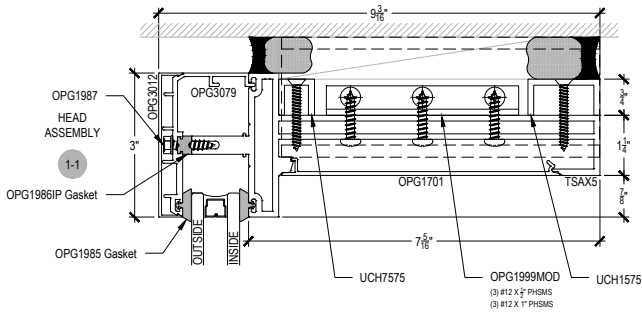
Ti Beam (3)-T500

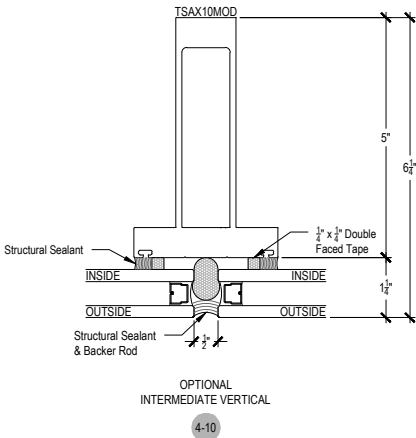
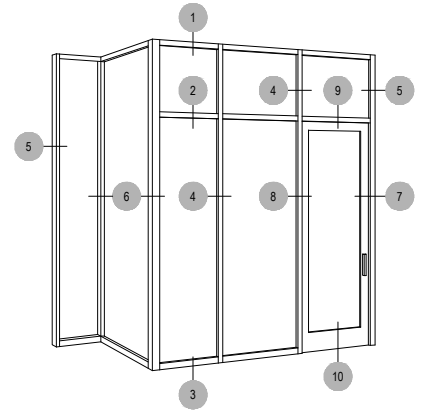
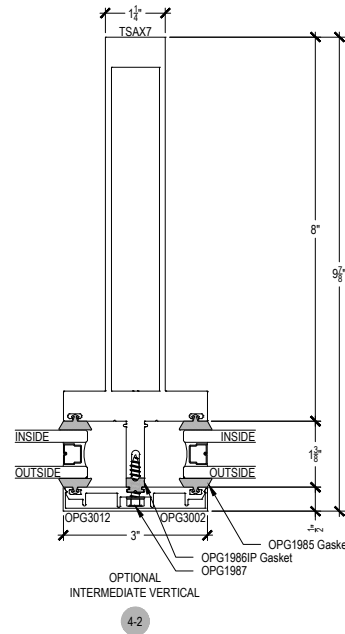
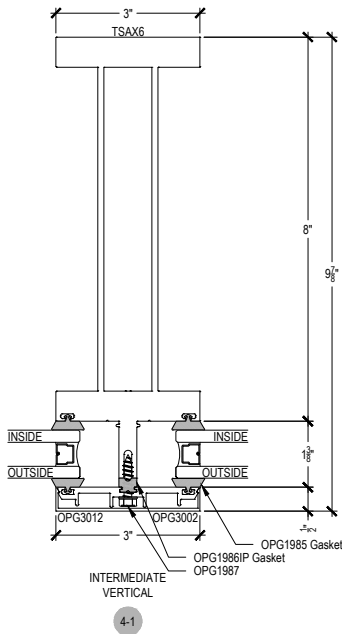
Description: 3" x 9 1/4" With 1" Glass

Function: Captured, Structural Silicone Glazed (SSG)

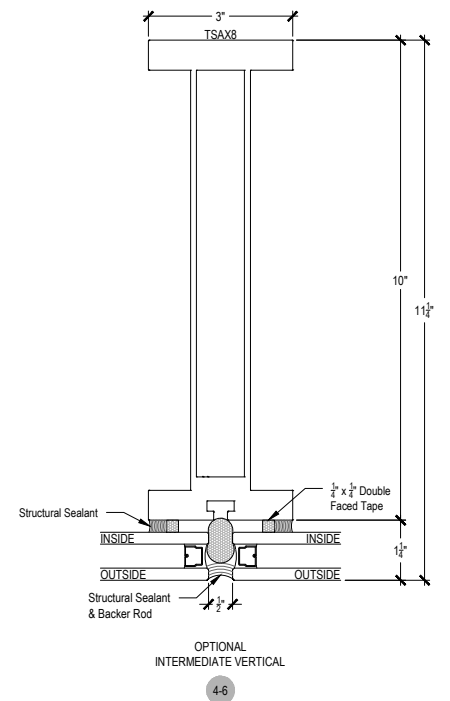
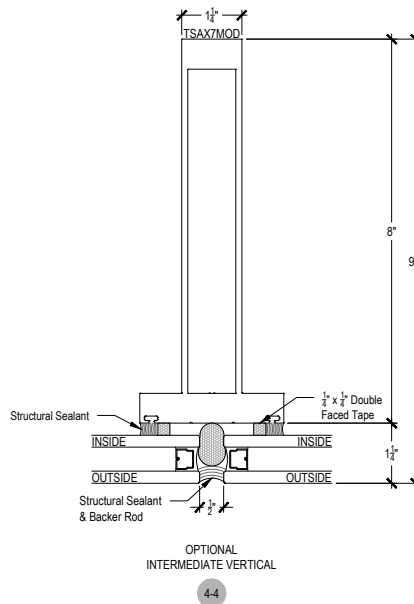
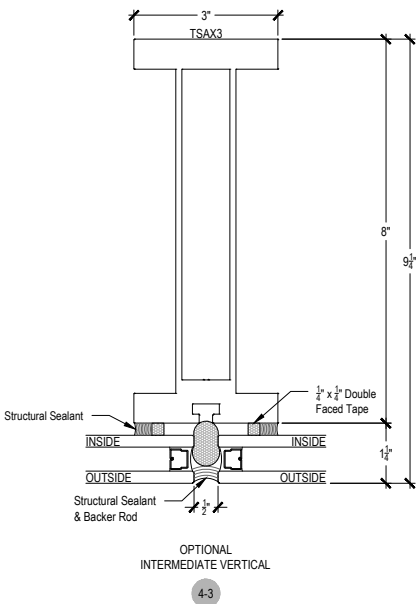
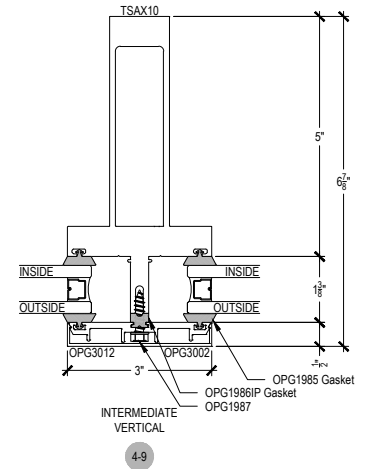
Detail: Horizontals

Scale: 3" = 1'-0"





NOTE:
WHEN NO SILL PROFILE IS USED IN THE ELEVATION THE VERTICAL MEMBERS WILL ANCHOR AT SILL USING A 1" x 1 1/4" ALUMINUM BAR AND A OPG1551MOD "F" or "T" ANCHOR AT THE HEAD.
WHEN HEAD AND SILL PROFILES ARE USED IN THE ELEVATION THE VERTICAL MEMBERS WILL ANCHOR AT TOP AND BOTTOM USING OPG1551MOD "F" or "T" ANCHOR AT THE HEAD AND SILL.





Ti Beam (3)-T500

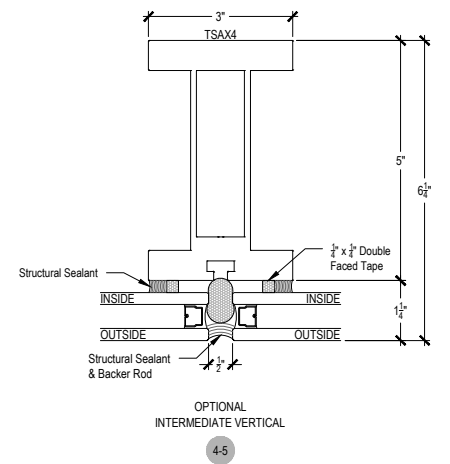
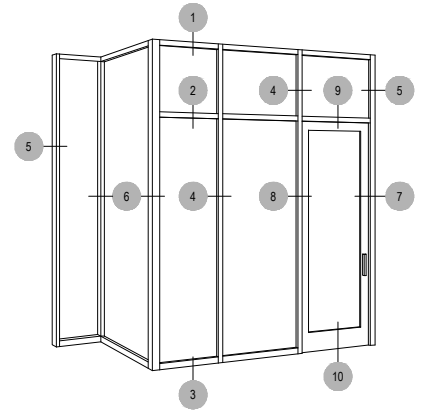
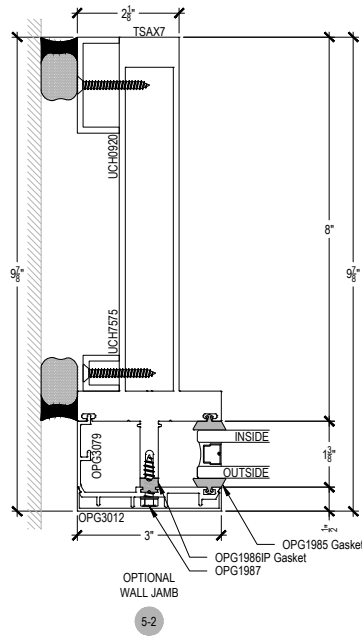
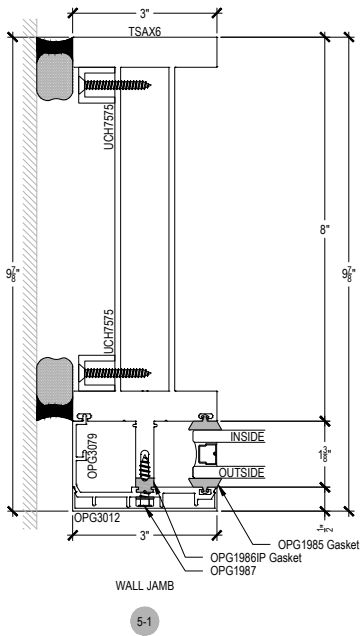
Description: 3" x 9 1/4" With 1" Glass

Function: Captured, Structural Silicone Glazed (SSG)

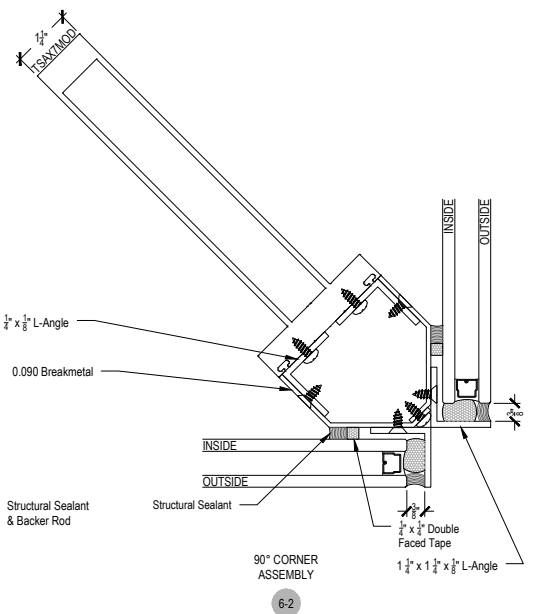
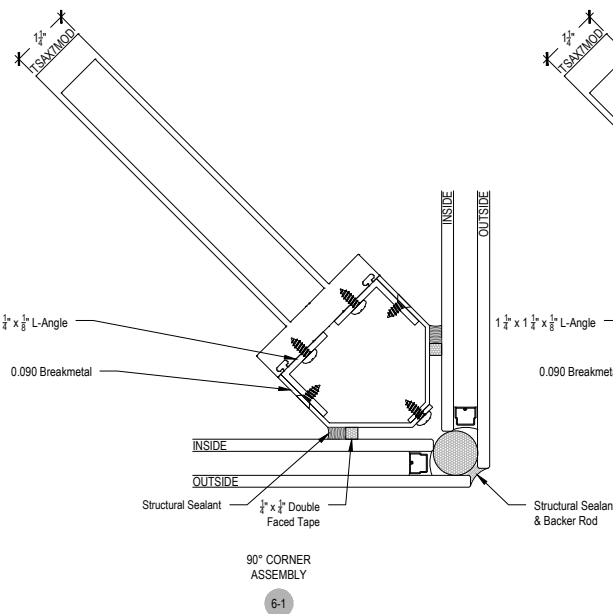
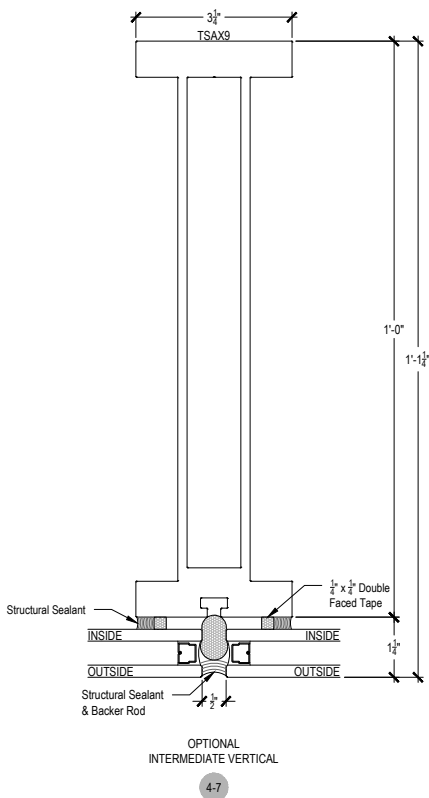
Detail: Verticals, Corners

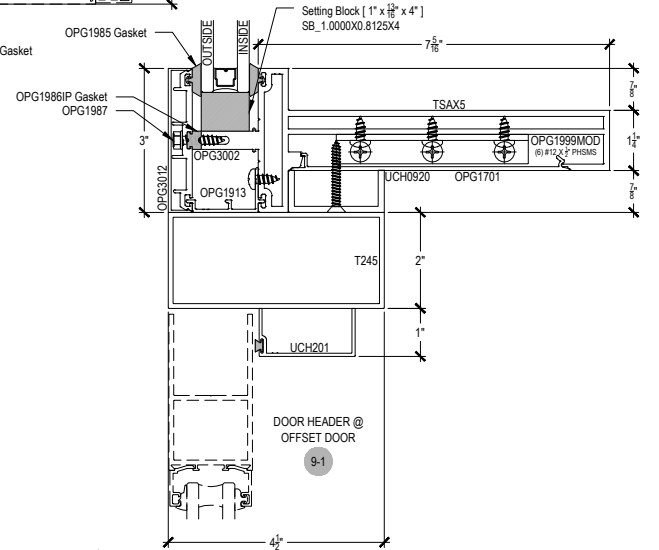
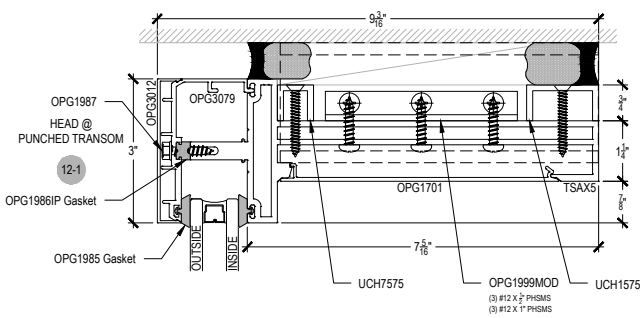
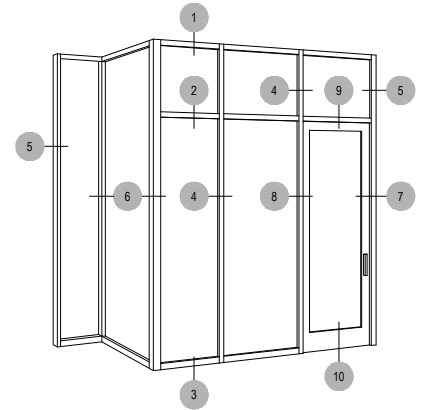
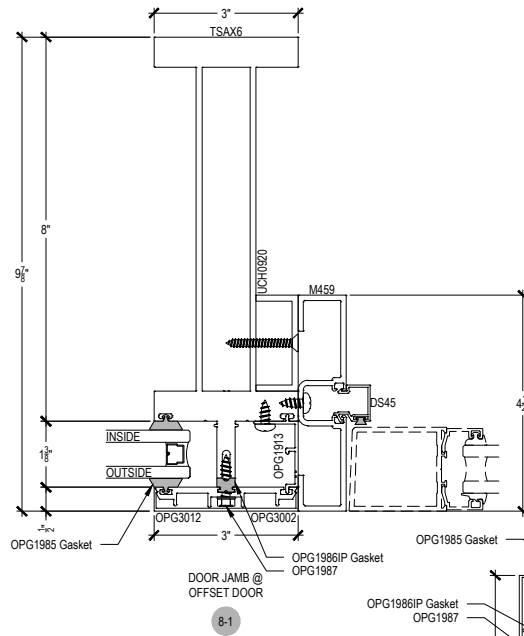
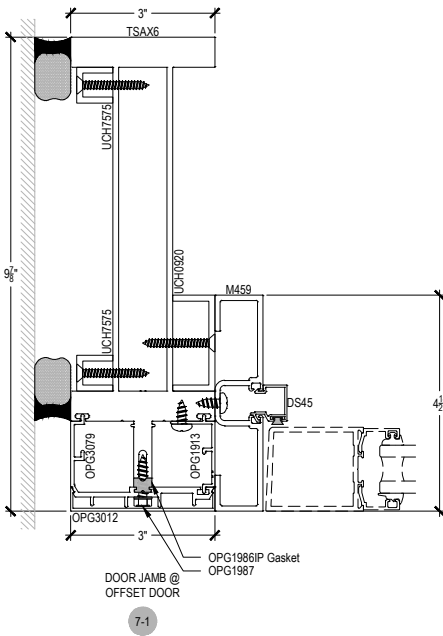
Scale: 3" = 1'-0"

SHEET 3 OF 5

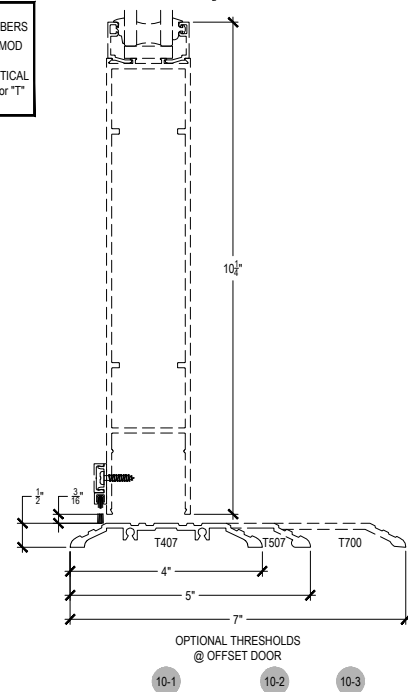
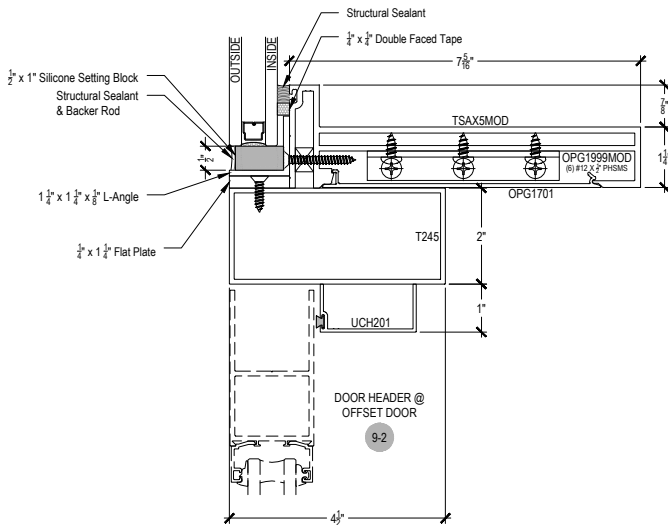


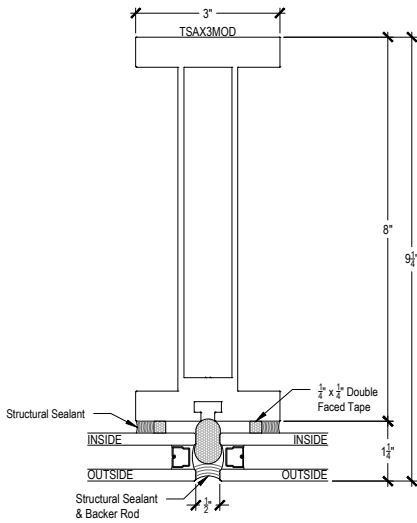
NOTE:
 WHEN NO SILL PROFILE IS USED IN THE ELEVATION THE VERTICAL MEMBERS WILL ANCHOR AT SILL USING A 1" x 1 1/4" ALUMINUM BAR AND A OPG1551MOD "F" or "T" ANCHOR AT THE HEAD.
 WHEN HEAD AND SILL PROFILES ARE USED IN THE ELEVATION THE VERTICAL MEMBERS WILL ANCHOR AT TOP AND BOTTOM USING OPG1551MOD "F" or "T" ANCHOR AT THE HEAD AND SILL.





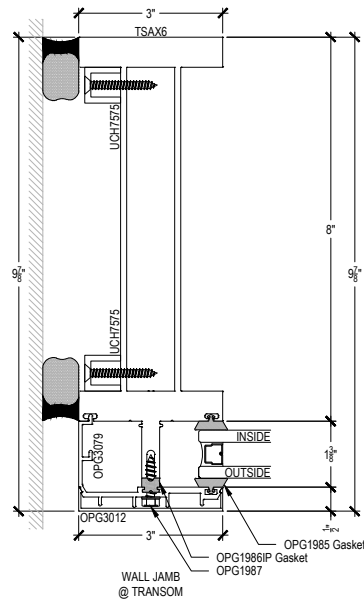
NOTE:
 WHEN NO SILL PROFILE IS USED IN THE ELEVATION THE VERTICAL MEMBERS WILL ANCHOR AT SILL USING A 1" x 1 1/2" ALUMINUM BAR AND A OPG1551MOD "F" or "T" ANCHOR AT THE HEAD.
 WHEN HEAD AND SILL PROFILES ARE USED IN THE ELEVATION THE VERTICAL MEMBERS WILL ANCHOR AT TOP AND BOTTOM USING OPG1551MOD "F" or "T" ANCHOR AT THE HEAD AND SILL.





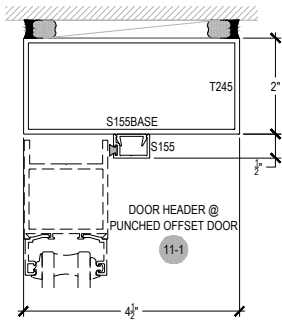
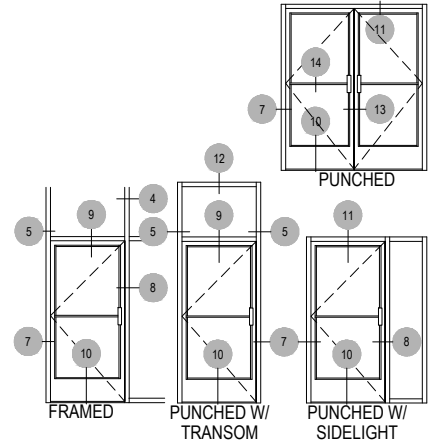
TRANSOM VERTICAL

4-8



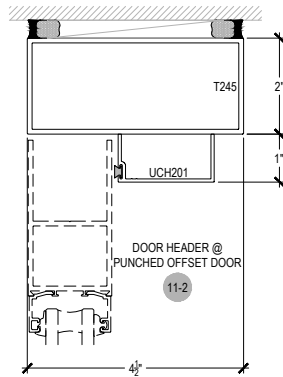
WALL JAMB @ TRANSOM

5-3



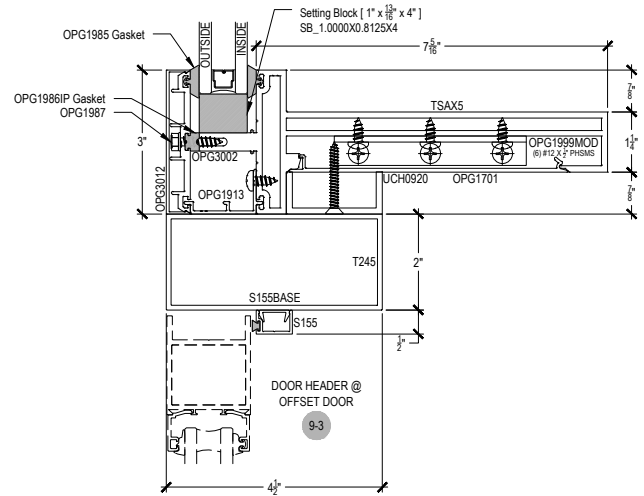
DOOR HEADER @ PUNCHED OFFSET DOOR

11-1



DOOR HEADER @ OFFSET DOOR

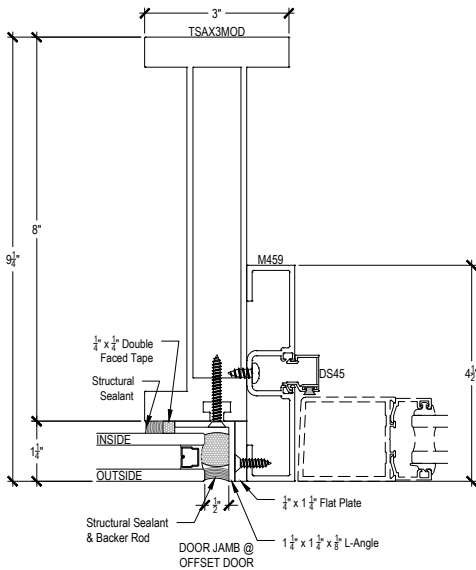
11-2



DOOR HEADER @ OFFSET DOOR

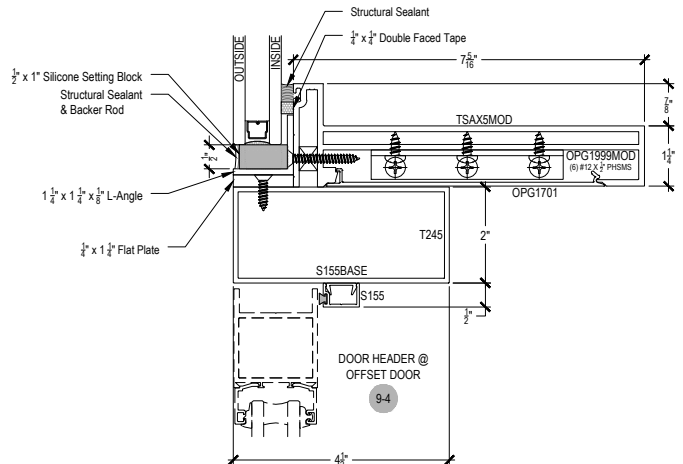
9-3

NOTE:
 WHEN NO SILL PROFILE IS USED IN THE ELEVATION THE VERTICAL MEMBERS WILL ANCHOR AT SILL USING A 1" x 1 1/2" ALUMINUM BAR AND A OPG1551MOD "F" or "T" ANCHOR AT THE HEAD.
 WHEN HEAD AND SILL PROFILES ARE USED IN THE ELEVATION THE VERTICAL MEMBERS WILL ANCHOR AT TOP AND BOTTOM USING OPG1551MOD "F" or "T" ANCHOR AT THE HEAD AND SILL.



DOOR JAMB @ OFFSET DOOR

8-2



DOOR JAMB @ OFFSET DOOR

9-4