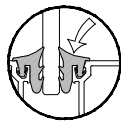
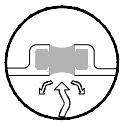


Offset Glazed



Top Load



Thermal



Impact

# IPTC670 Series

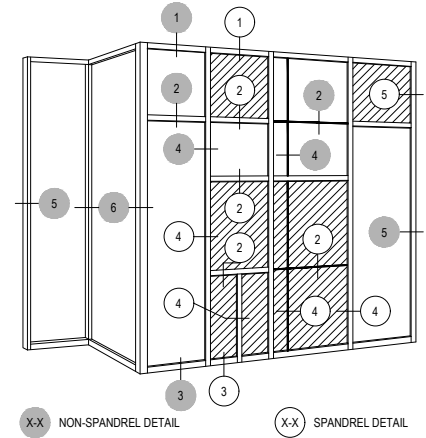
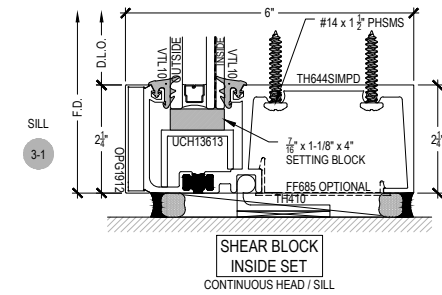
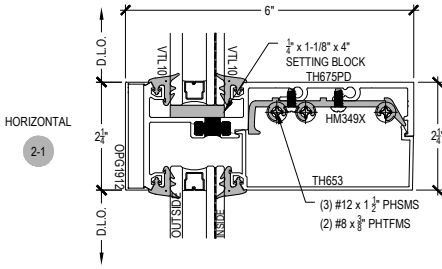
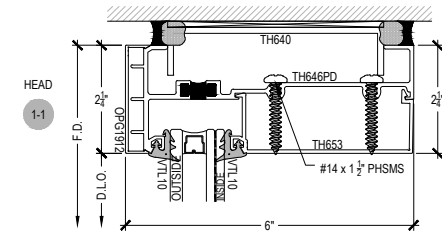
Description: 2 1/4" x 6" Glazed for 1 1/8" Glass

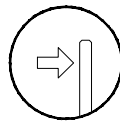
Function: Impact Window Wall

Detail: Heads, Horizontals, Sills

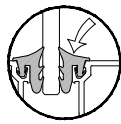
Scale: 3" = 1'-0"

SHEET 1 OF 2

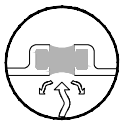




Offset Glazed



Top Load



Thermal



Impact

# IPTC670 Series

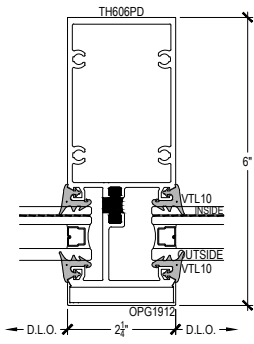
Description: 2 1/4" x 6" Glazed for 1 1/8" Glass

Function: Impact Window Wall

Detail: Verticals, Jamb

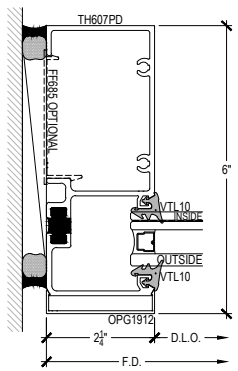
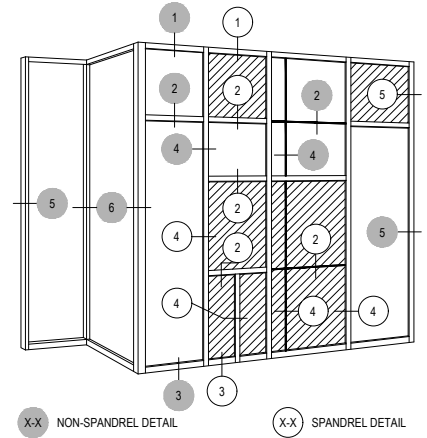
Scale: 3" = 1'-0"

SHEET 2 OF 2



VERTICAL

4-1



JAMB

5-1