

Offset Glazed Side Load Thermal
Optional Projected Cover Caps Available

T500-OPG3800ET Series

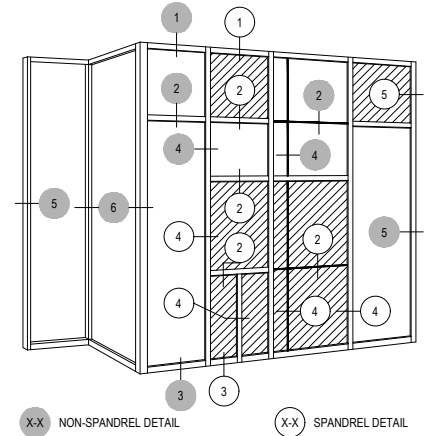
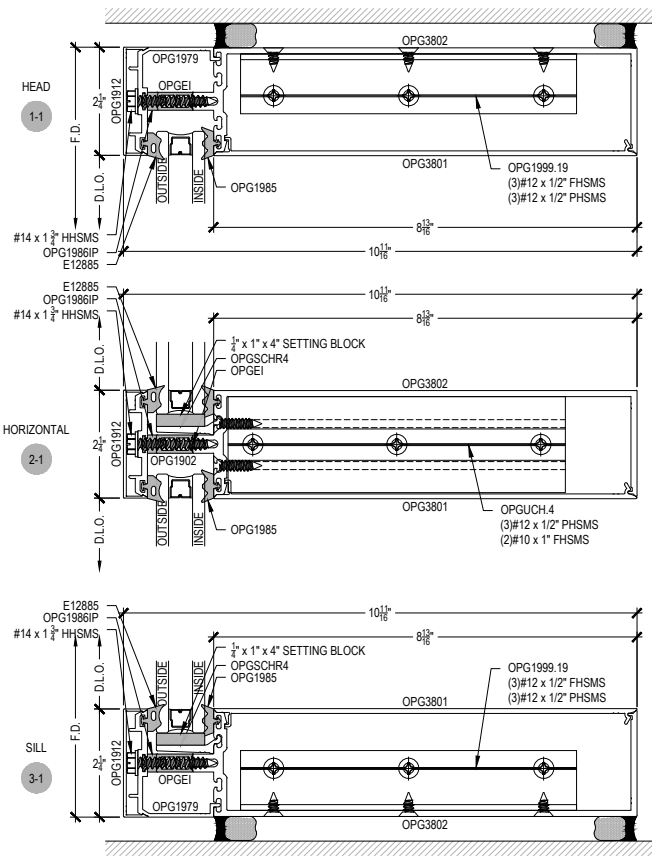
Description: 2 1/4" x 10 3/4" Glazed for 1" & 1-1/8" Glass

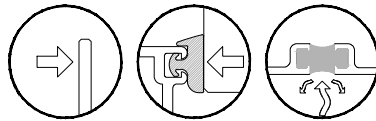
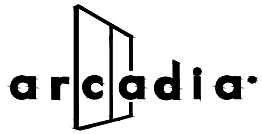
Function: Curtain Wall

Detail: Heads, Horizontals, Sills

Scale: 3" = 1'-0"

SHEET 1 OF 9



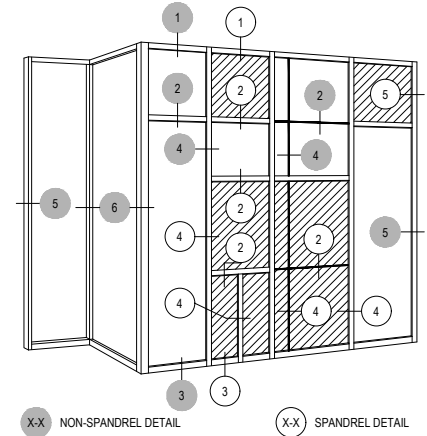
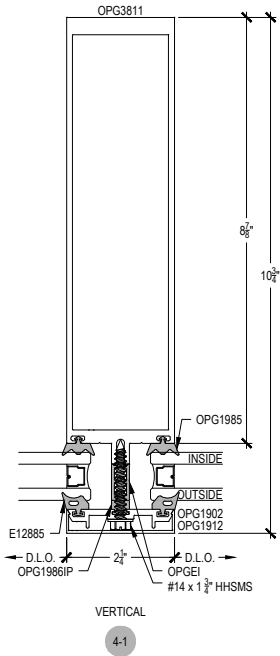


Offset Glazed
Side Load
Thermal
Optional Projected Cover Caps Available

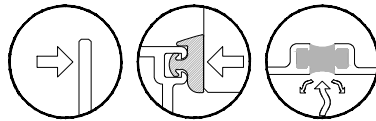
T500-OPG3800ET Series

Description: 2 1/4" x 10 3/4" Glazed for 1" & 1-1/8" Glass
Function: Curtain Wall
Detail: Verticals
Scale: 3" = 1'-0"

SHEET 2 OF 9



NOTE:
SEE PARTS ID SHEETS FOR 'F'
& 'T' ANCHOR PARTS
NUMBERS TO EACH VERTICAL.

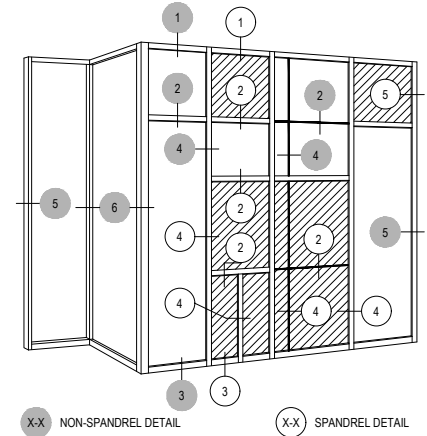
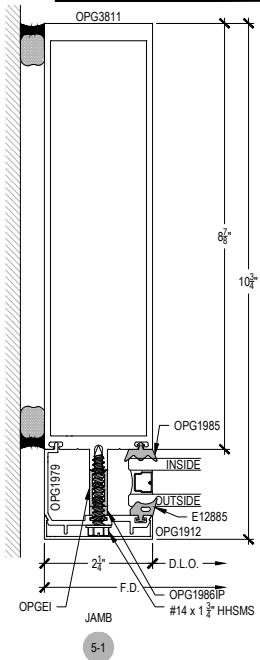


Offset Glazed Side Load Thermal
Optional Projected Cover Caps Available

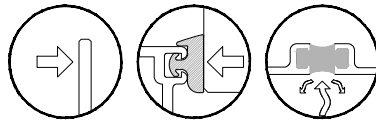
T500-OPG3800ET Series

Description: 2 1/4" x 10 3/4" Glazed for 1" & 1-1/8" Glass
Function: Curtain Wall
Detail: Jamb
Scale: 3" = 1'-0"

SHEET 3 OF 9



NOTE:
SEE PARTS ID SHEETS FOR 'F'
& 'T' ANCHOR PARTS
NUMBERS TO EACH VERTICAL

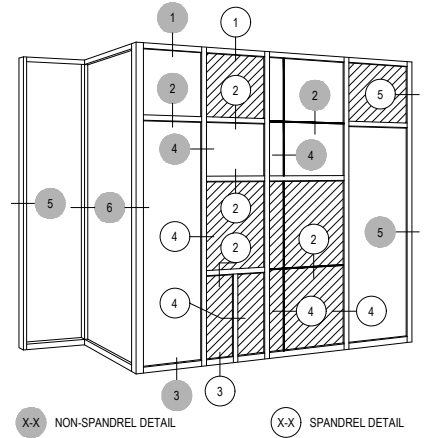
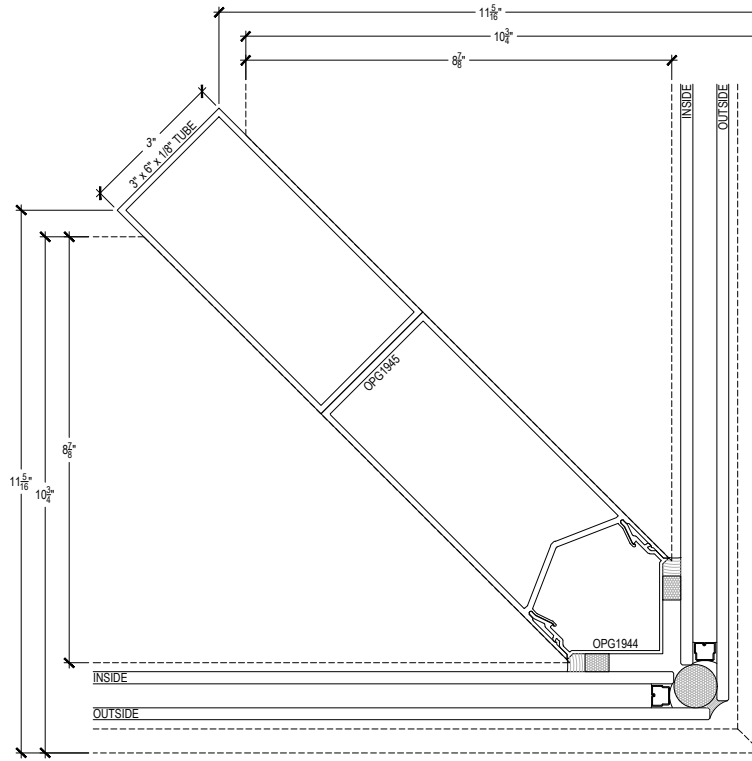


Offset Glazed Side Load Thermal
Optional Projected Cover Caps Available

T500-OPG3800ET Series

Description: 2 1/4" x 10 3/4" Glazed for 1" & 1-1/8" Glass
Function: Curtain Wall
Detail: Corners
Scale: 3" = 1'-0"

SHEET 4 OF 9



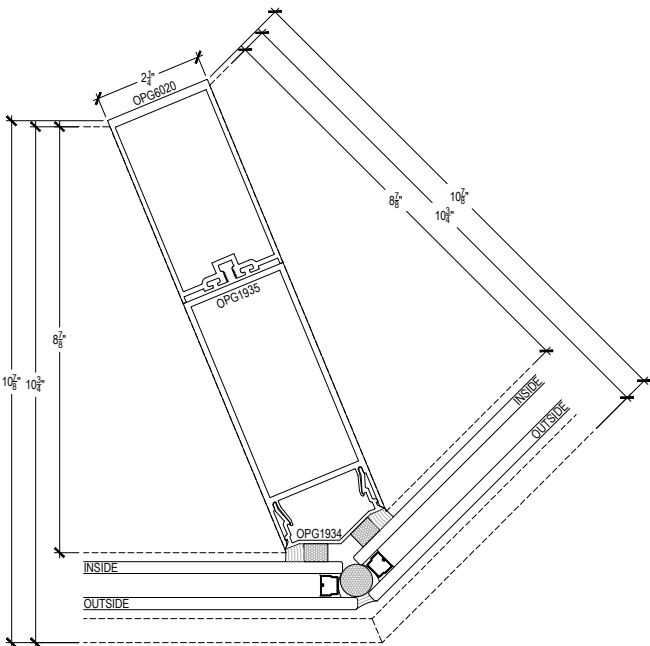
INTENTIONALLY LEFT BLANK
NO CURRENT DETAIL

90° CAPTURED CORNER

6-1

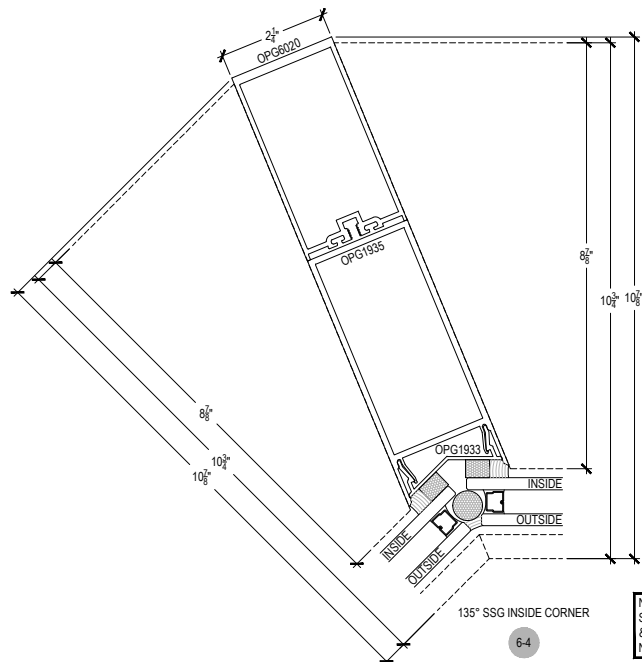
90° SSG OUTSIDE CORNER

6-2



135° SSG OUTSIDE CORNER

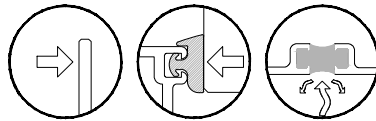
6-3



135° SSG INSIDE CORNER

6-4

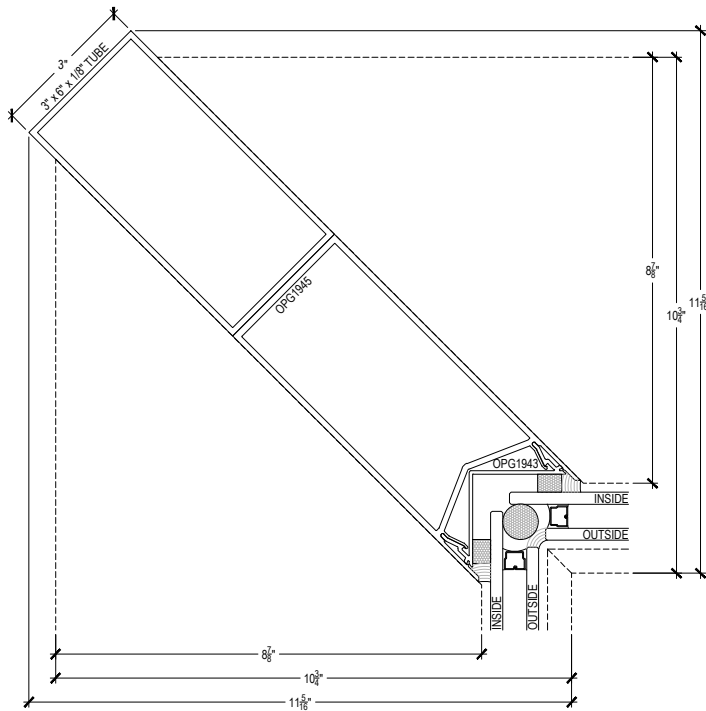
NOTE:
SEE PARTS ID SHEETS FOR 'F'
& 'T' ANCHOR PARTS
NUMBERS TO EACH VERTICAL



Offset Glazed Side Load Thermal
Optional Projected Cover Caps Available

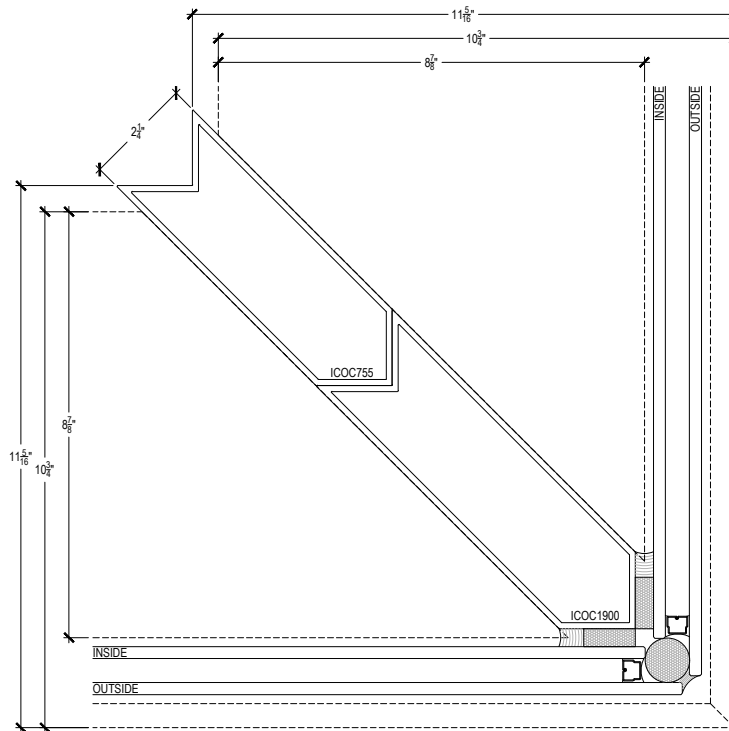
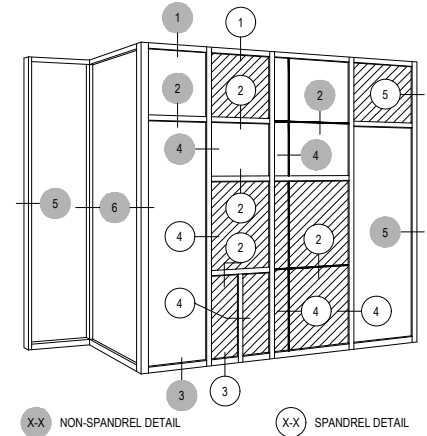
T500-OPG3800ET Series

Description: 2 1/4" x 10 3/4" Glazed for 1" & 1-1/8" Glass
Function: Curtain Wall
Detail: Corners
Scale: 3" = 1'-0"



90° SSG INSIDE CORNER

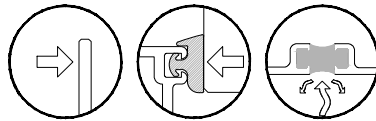
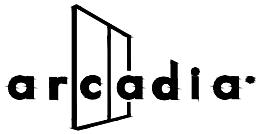
6-5



90° SSG OUTSIDE CORNER

6-6

NOTE:
SEE PARTS ID SHEETS FOR 'F'
& 'T' ANCHOR PARTS
NUMBERS TO EACH VERTICAL



Offset Glazed Side Load Thermal
Optional Projected Cover Caps Available

T500-OPG3800ET Series

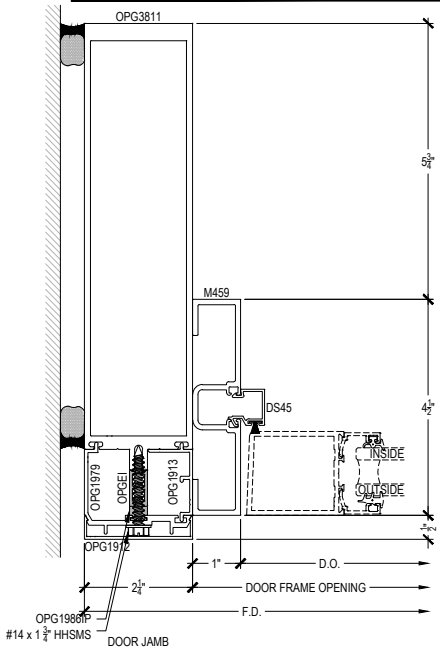
Description: 2 1/4" x 10 3/4" Glazed for 1" & 1-1/8" Glass

Function: Curtain Wall

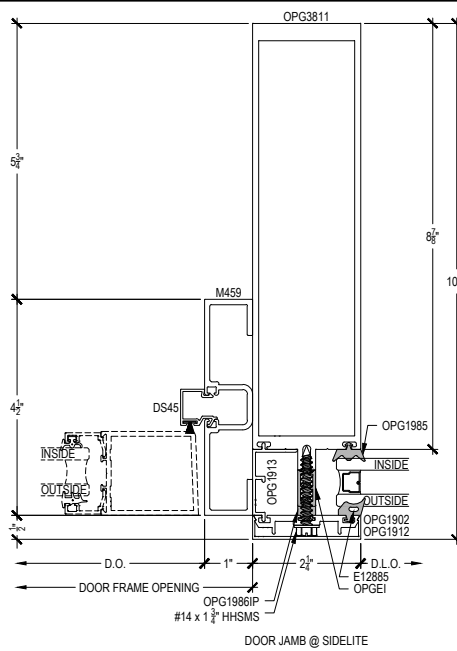
Detail: Offset Hung Doors

Scale: 3" = 1'-0"

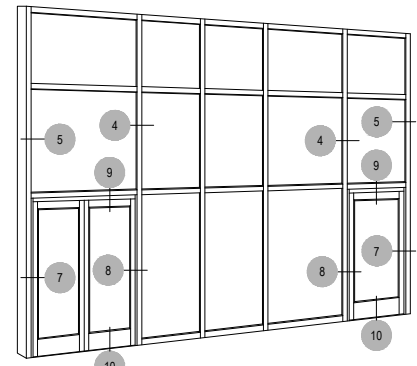
SHEET 6 OF 9



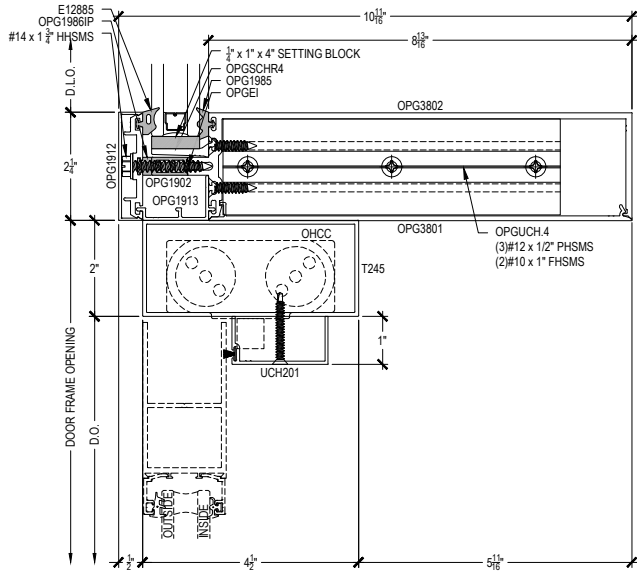
7-1



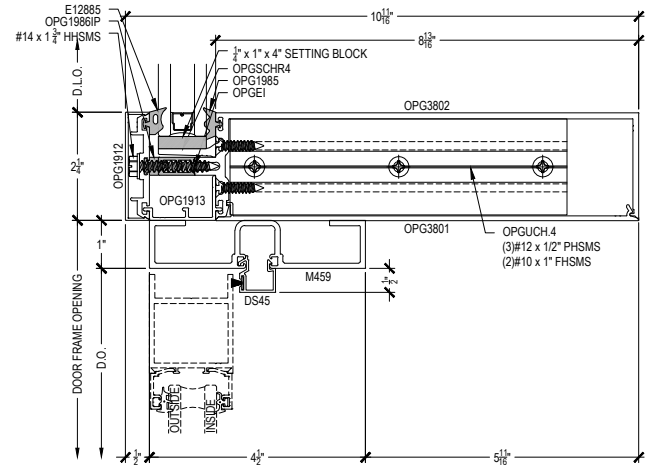
8-1



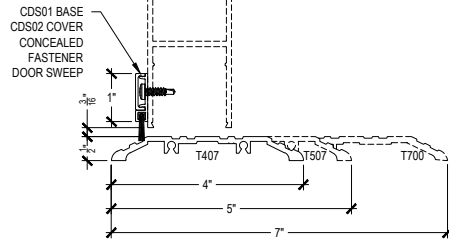
X-X NON-SPANDREL DETAIL X-X SPANDREL DETAIL



9-1



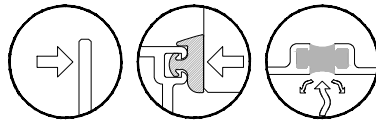
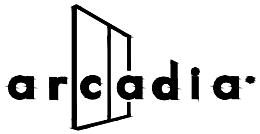
9-2



OPTIONAL THRESHOLDS @ OFFSET HUNG DOOR
10-1 10-2 10-3

NOTE: TYPICAL VERTICALS & HORIZONTALS SHOWN IN DOOR DETAILS. OPTIONAL TO CHANGE OUT FOR PROJECT SPECIFIC NEEDS.

NOTE: SEE PARTS ID SHEETS FOR 'F' & 'T' ANCHOR PARTS FOR ALL DOOR OPTIONS SEE THE ENTRANCE SECTION OF ARCADIA, INC. WEBSITE.

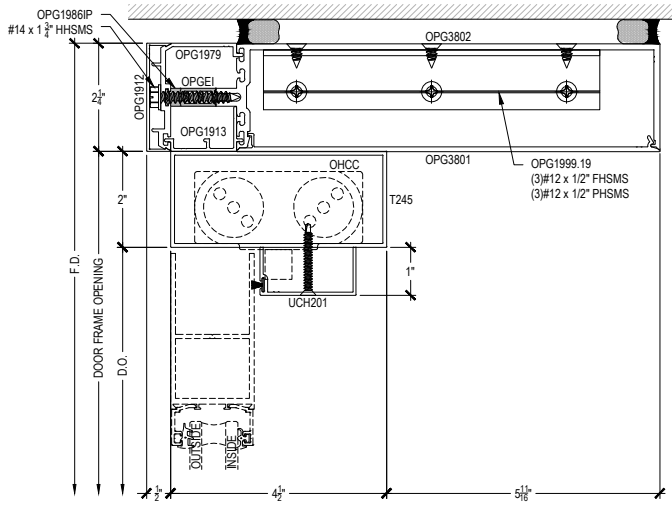


Offset Glazed Side Load Thermal
Optional Projected Cover Caps Available

T500-OPG3800ET Series

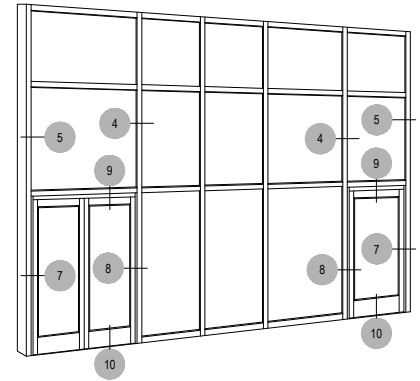
Description: 2 1/4" x 10 3/4" Glazed for 1" & 1-1/8" Glass
Function: Curtain Wall
Detail: Offset Hung Doors
Scale: 3" = 1'-0"

SHEET 7 OF 9



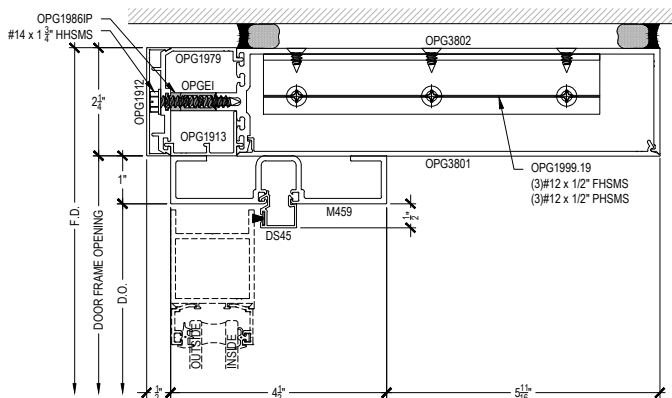
DOOR HEADER
CONCEALED CLOSER
@ PUNCHED OPENING

11-1



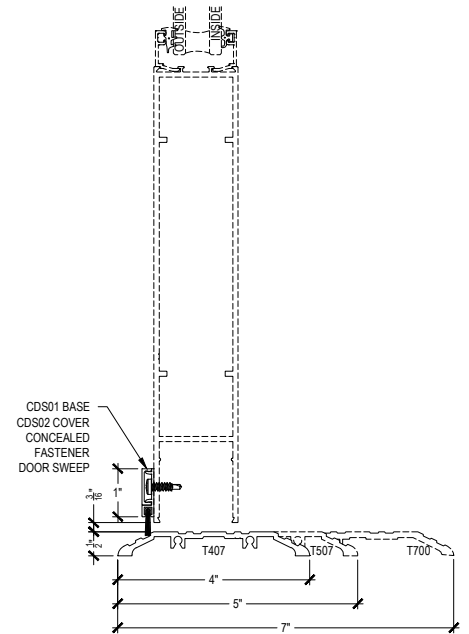
X-X NON-SPANDREL DETAIL

X-X SPANDREL DETAIL



DOOR HEADER
SURFACE CLOSER
@ PUNCHED OPENING

11-2



OPTIONAL THRESHOLDS
@ OFFSET HUNG DOOR

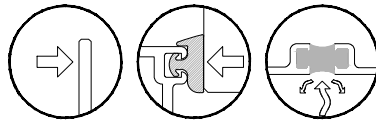
10-1

10-2

10-3

NOTE:
SEE PARTS ID SHEETS FOR "F"
& "T" ANCHOR PARTS
NUMBERS TO EACH VERTICAL.

NOTE:
FOR ALL DOOR OPTIONS SEE
THE ENTRANCE SECTION OF
ARCADIA, INC. WEBSITE.



Offset Glazed
Optional Projected Cover Caps Available

Side Load

Thermal

T500-OPG3800ET Series

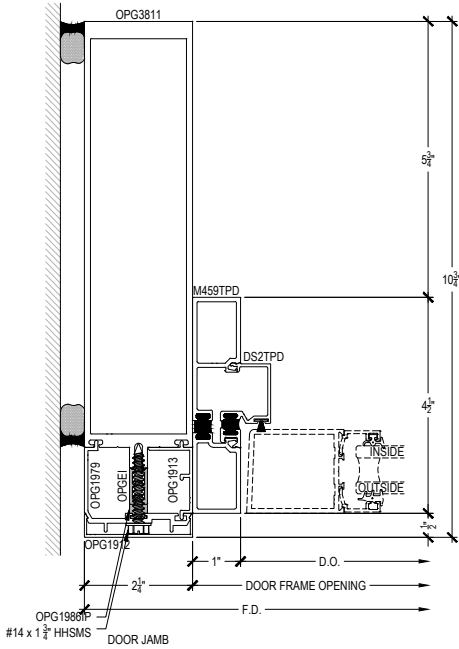
Description: 2 1/4" x 10 3/4" Glazed for 1" & 1-1/8" Glass

Function: Curtain Wall

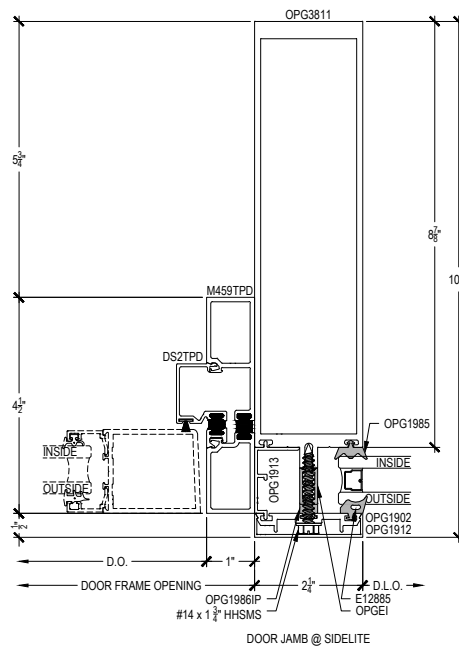
Detail: Offset Hung Doors & Options

Scale: 3" = 1'-0"

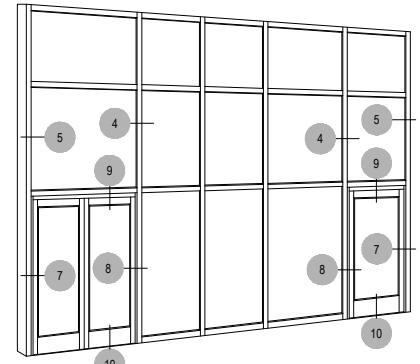
SHEET 8 OF 9



7-3

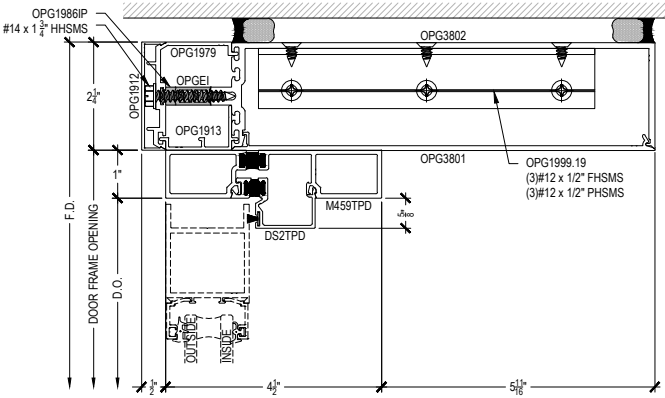


8-3

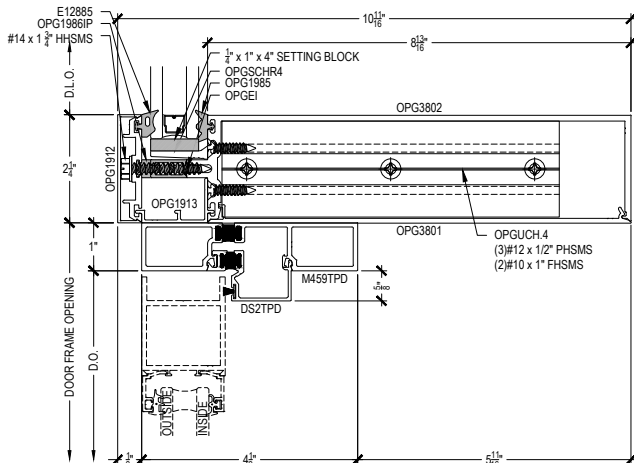


X-X NON-SPANDREL DETAIL

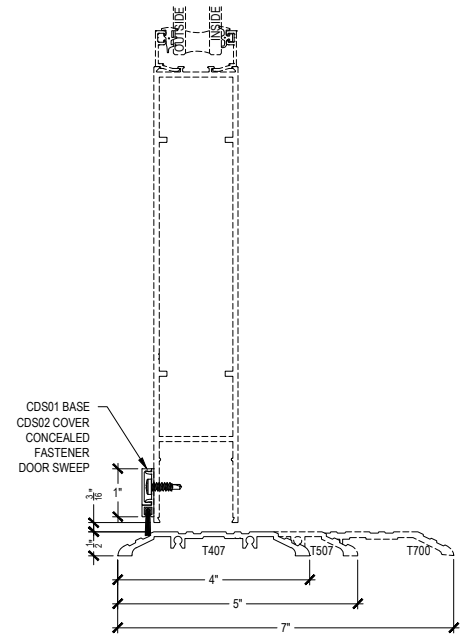
X-X SPANDREL DETAIL



11-3



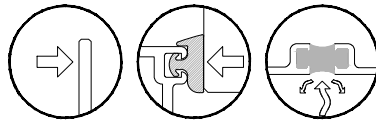
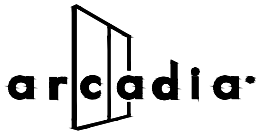
9-4



10-1 10-2 10-3

NOTE:
TYPICAL VERTICALS &
HORIZONTALS SHOWN IN
DOOR DETAILS. OPTIONAL
TO CHANGE OUT FOR
PROJECT SPECIFIC NEEDS.

NOTE:
SEE PARTS ID SHEETS FOR "F"
& "T" ANCHOR PARTS
FOR ALL DOOR OPTIONS SEE
THE ENTRANCE SECTION OF
ARCADIA, INC. WEBSITE.



Offset Glazed
Side Load
Thermal
Optional Projected Cover Caps Available

T500-OPG3800ET Series

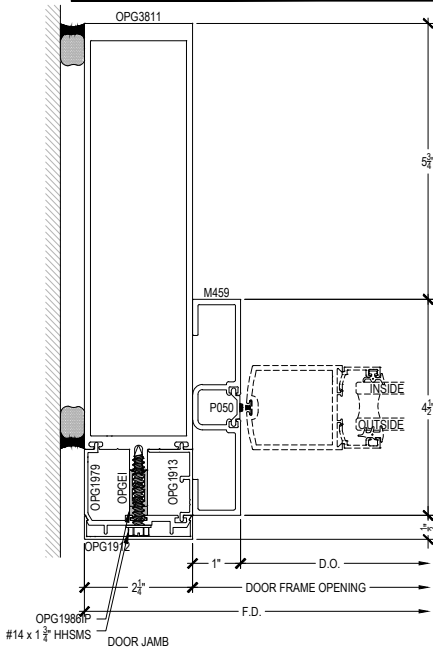
Description: 2 1/4" x 10 3/4" Glazed for 1" & 1-1/8" Glass

Function: Curtain Wall

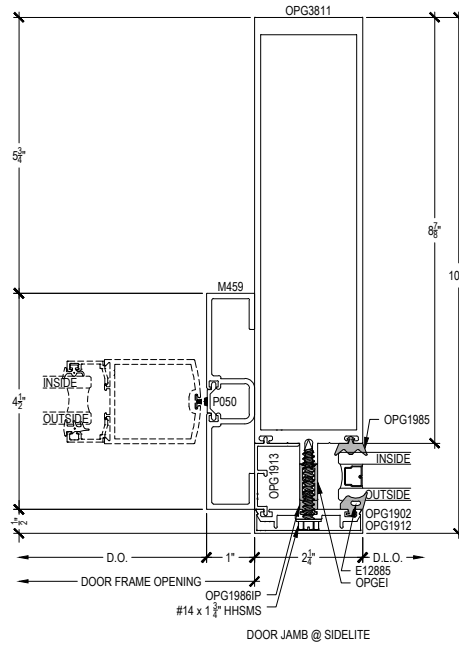
Detail: Center Hung Doors

Scale: 3" = 1'-0"

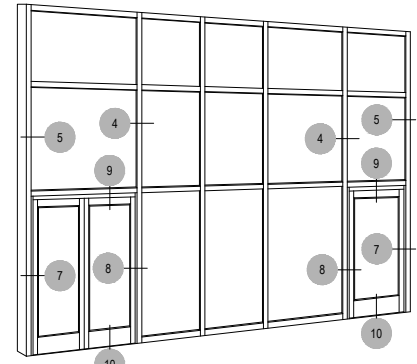
SHEET 9 OF 9



7-2

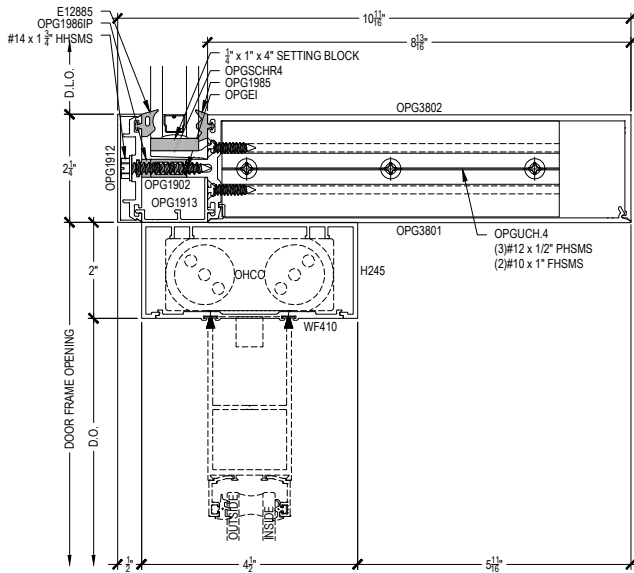


8-2

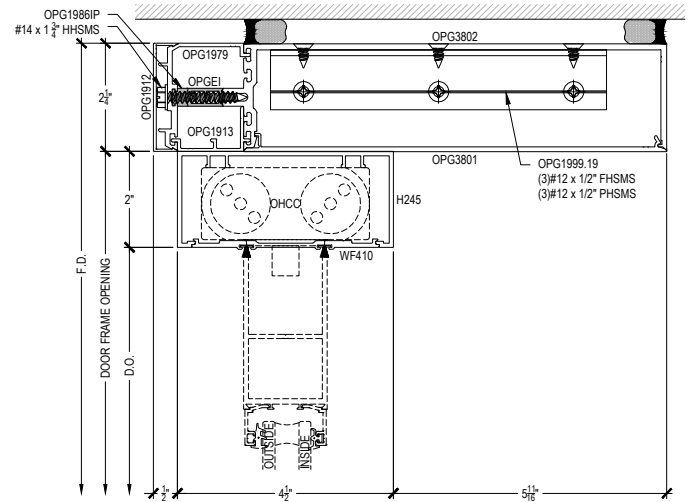


X-X NON-SPANDEL DETAIL

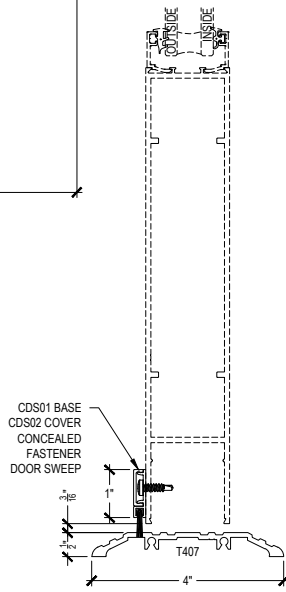
X-X SPANDEL DETAIL



9-3



11-4



10-4

NOTE:
TYPICAL VERTICALS &
HORIZONTALS SHOWN IN
DOOR DETAILS. OPTIONAL
TO CHANGE OUT FOR
PROJECT SPECIFIC NEEDS.

NOTE:
SEE PARTS ID SHEETS FOR "F"
& "T" ANCHOR PARTS

NOTE:
FOR ALL DOOR OPTIONS SEE
THE ENTRANCE SECTION OF
ARCADIA, INC. WEBSITE.