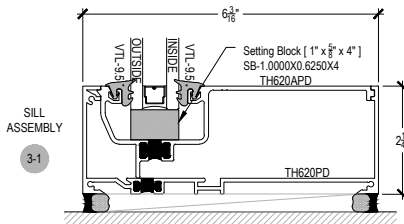
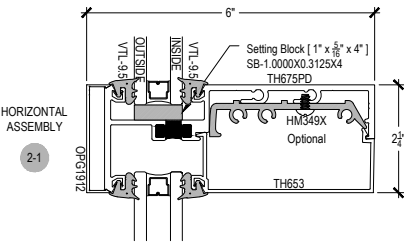
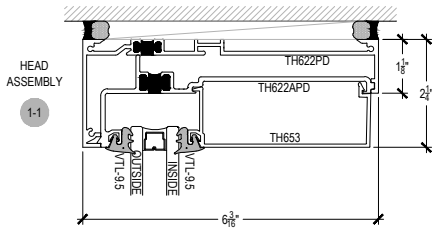
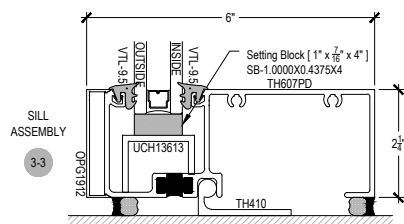
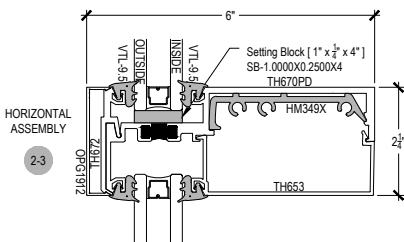
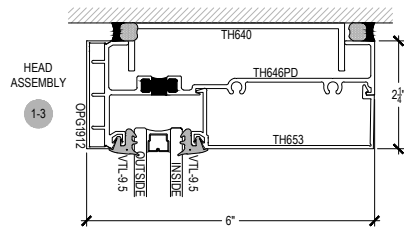


TC670 Series

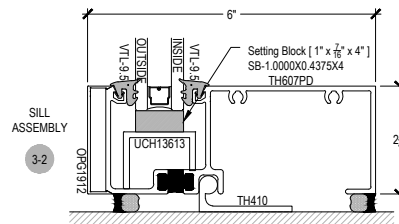
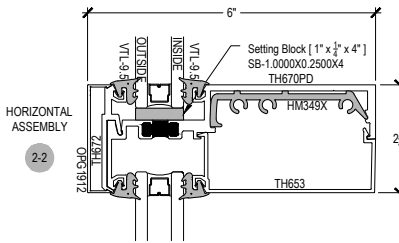
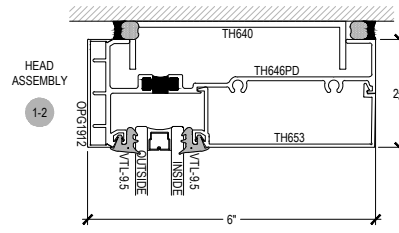
Description: 2 1/4" X 6" Captured Glazed For 1" Glass
 Function: Window Wall
 Detail: Horizontals
 Scale: 3" = 1'-0"



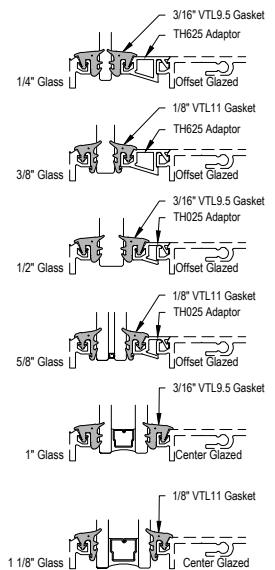
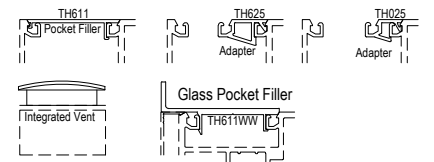
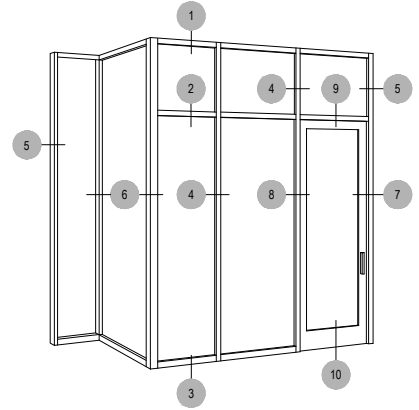
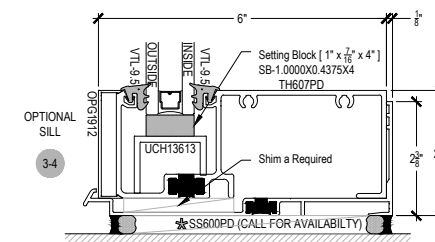
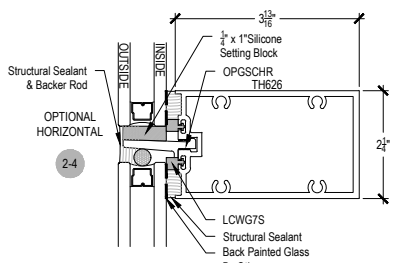
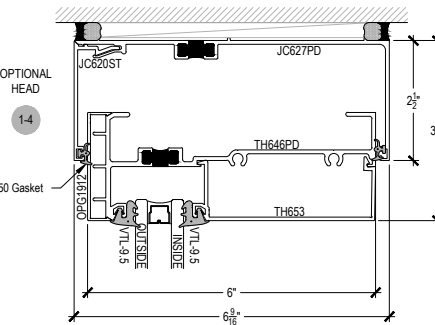
COMPENSATING STICK
INSIDE SET



SCREW RACE
INSIDE SET
Verticals Run Through

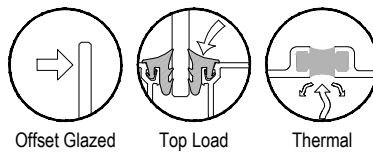


SHEAR BLOCK
INSIDE SET
Continuous Head / Sill



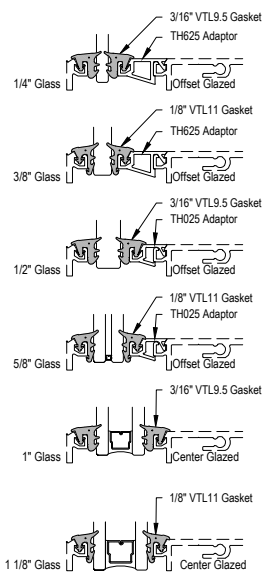
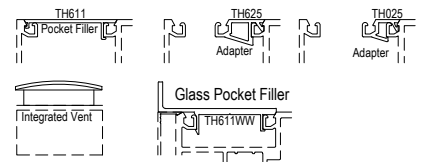
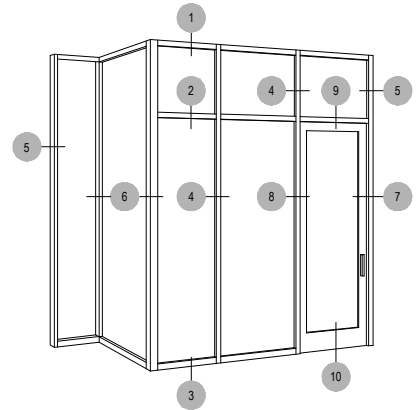
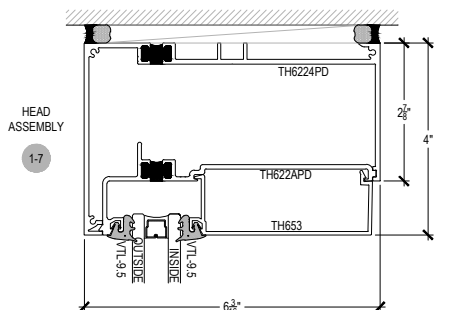
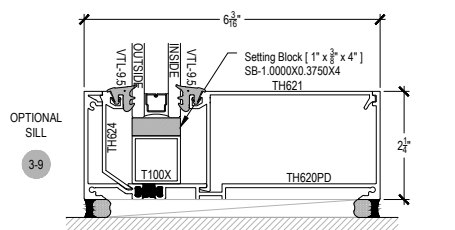
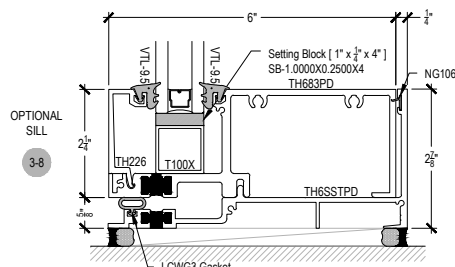
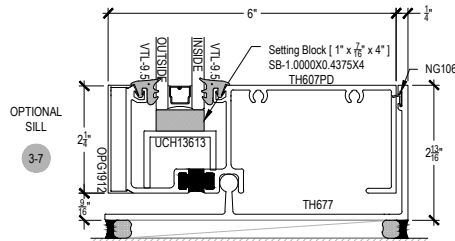
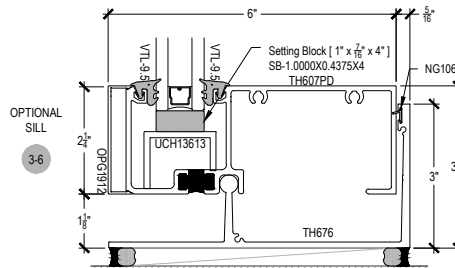
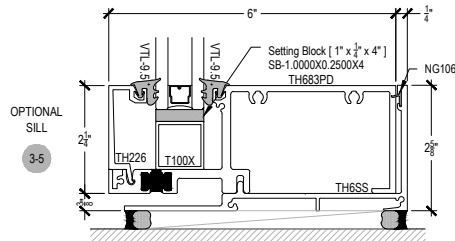
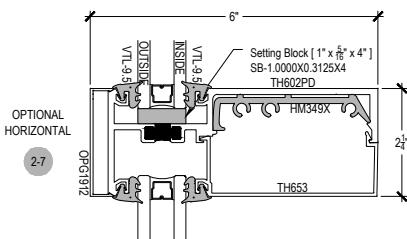
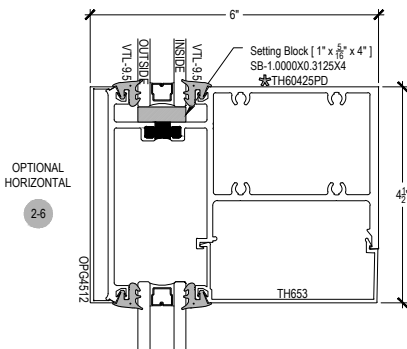
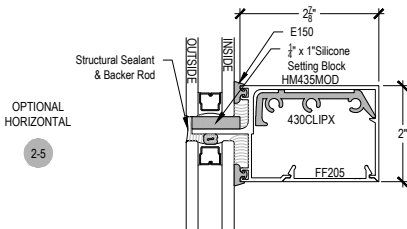
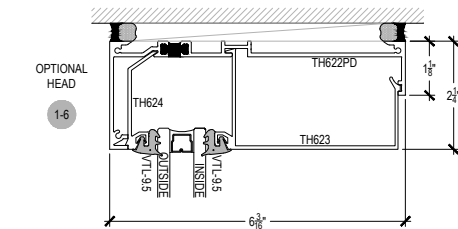
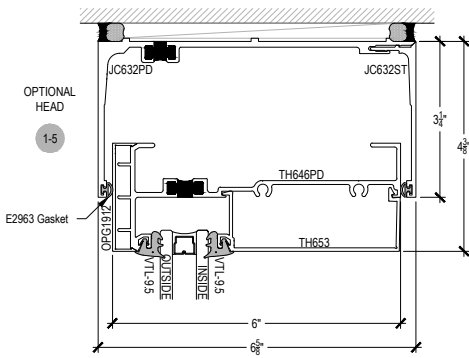
NOTE:
 NOTCH REQUIRED AT TOP OF VERTICALS AND JAMBS
 FOR CAN SYSTEM INSTALLATIONS TYPICAL.
 PLEASE CONSULT WITH ARCADIA FOR
 ANY QUESTIONS OR CONCERNS.

Procedures, instructions, or modifications
 which may affect pricing and delivery,
 consult Arcadia customer service.



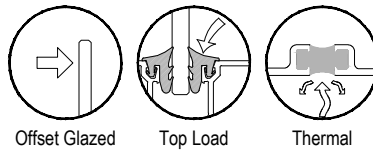
TC670 Series

Description: 2 1/4" X 6" Captured Glazed For 1" Glass
 Function: Window Wall
 Detail: Horizontals
 Scale: 3" = 1'-0"



NOTE:
 NOTCH REQUIRED AT TOP OF VERTICALS AND JAMBS
 FOR CAN SYSTEM INSTALLATIONS TYPICAL.
 PLEASE CONSULT WITH ARCADIA FOR
 ANY QUESTIONS OR CONCERNS.

⚠ Procedures, instructions, or modifications
 which may affect pricing and delivery,
 consult Arcadia customer service. ✖



TC670 Series

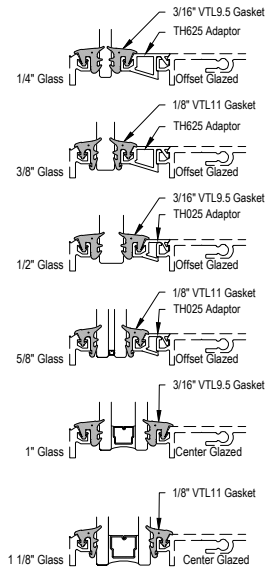
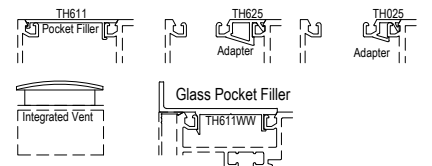
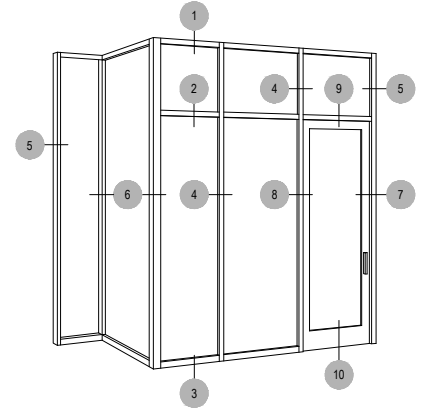
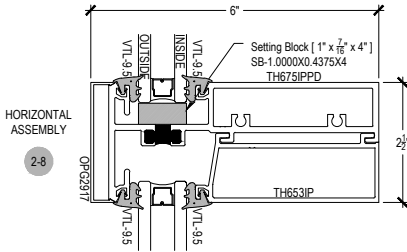
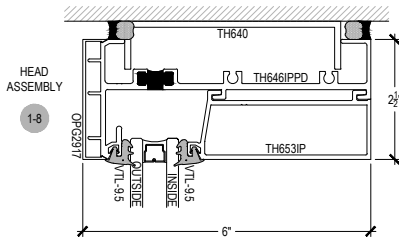
Description: 2 1/4" X 6" Captured Glazed For 1" Glass

Function: Window Wall

Detail: Horizontals

Scale: 3" = 1'-0"

SHEET 3 OF 8

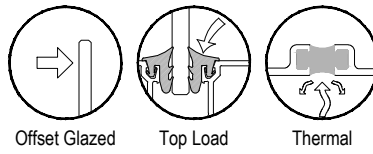


NOTE:
 NOTCH REQUIRED AT TOP OF VERTICALS AND JAMBS
 FOR CAN SYSTEM INSTALLATIONS TYPICAL.
 PLEASE CONSULT WITH ARCADIA FOR
 ANY QUESTIONS OR CONCERNS.



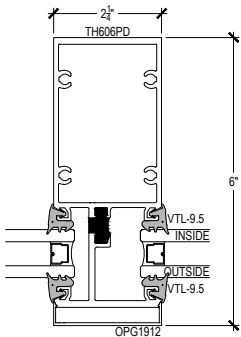
Procedures, instructions, or modifications
 which may affect pricing and delivery,
 consult Arcadia customer service.



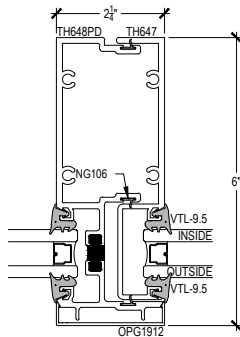


TC670 Series

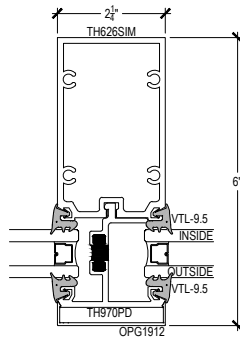
Description: 2 1/4" X 6" Captured Glazed For 1" Glass
 Function: Window Wall
 Detail: Verticals
 Scale: 3" = 1'-0"



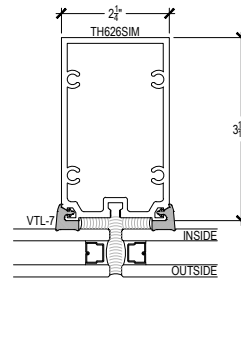
VERTICAL
4-1



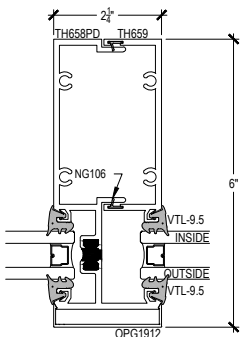
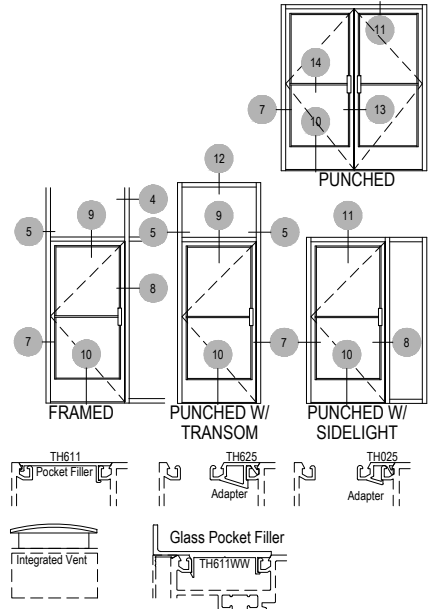
VERTICAL
4-2



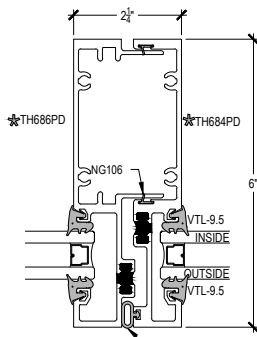
VERTICAL
4-3



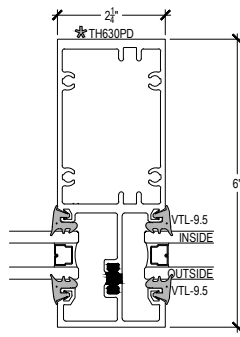
VERTICAL
4-4



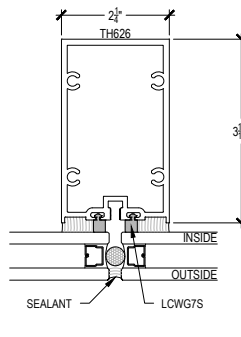
VERTICAL
4-5



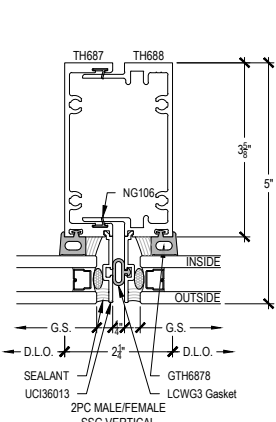
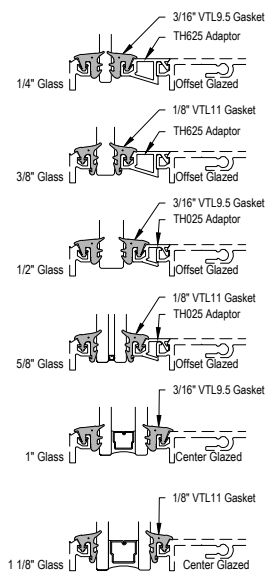
VERTICAL
4-6



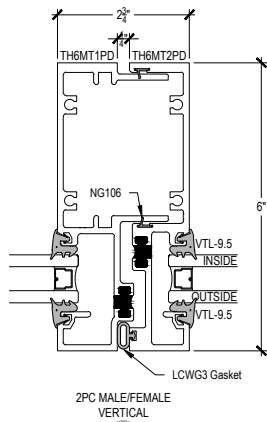
VERTICAL
4-7



VERTICAL
4-8



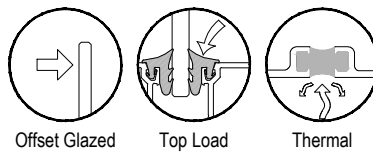
4-9



4-10

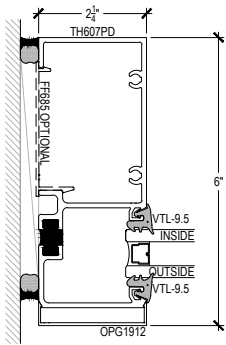
NOTE:
 NOTCH REQUIRED AT TOP OF VERTICALS AND JAMBS
 FOR CAN SYSTEM INSTALLATIONS TYPICAL.
 PLEASE CONSULT WITH ARCADIA FOR
 ANY QUESTIONS OR CONCERNS.

⚠ Procedures, instructions, or modifications
 which may affect pricing and delivery,
 consult Arcadia customer service. ✖

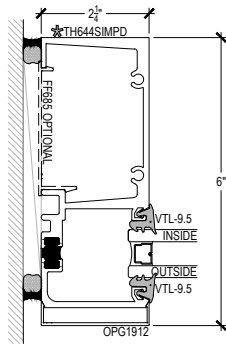


TC670 Series

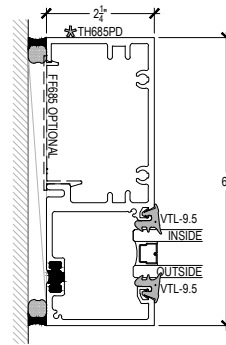
Description: 2 1/4" X 6" Captured Glazed For 1" Glass
 Function: Window Wall
 Detail: Jambs, Corners
 Scale: 3" = 1'-0"



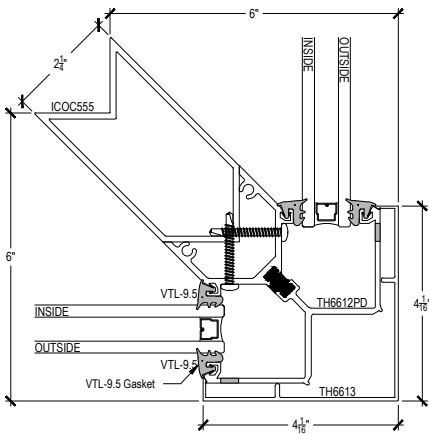
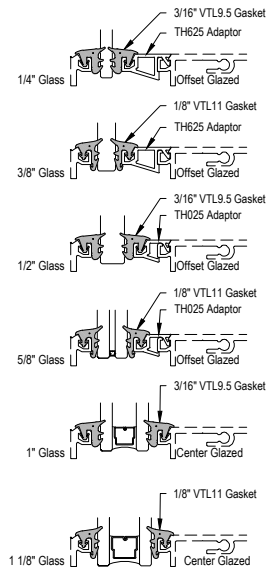
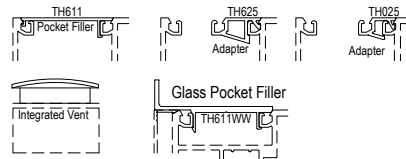
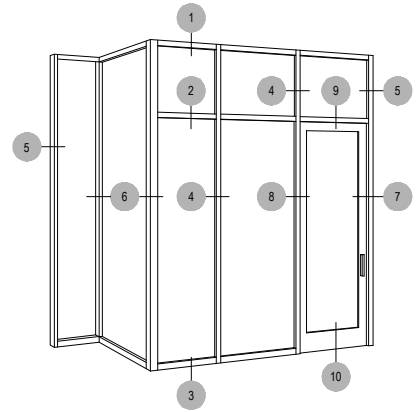
JAMB
5-1



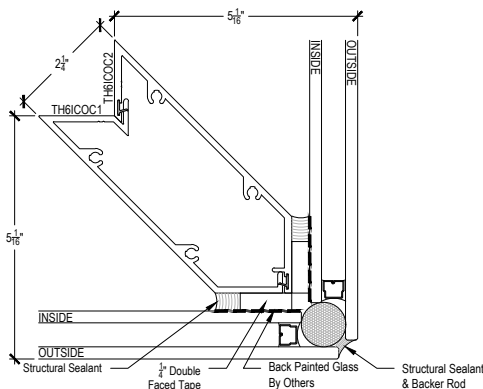
JAMB
5-2



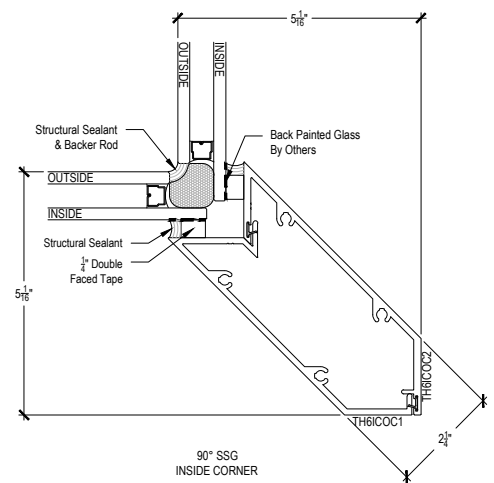
JAMB
5-3



90° CAPTURED
OUTSIDE CORNER
6-1



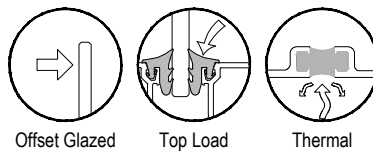
90° SSG
OUTSIDE CORNER
6-2
Minimum Order Requirement



90° SSG
INSIDE CORNER
6-3
Minimum Order Requirement

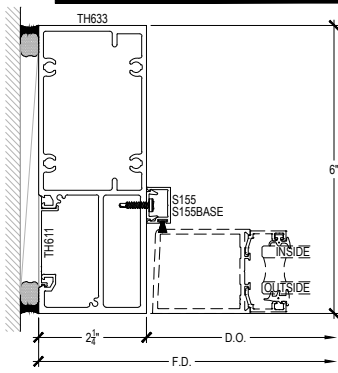
⚠ Procedures, instructions, or modifications which may affect pricing and delivery, consult Arcadia customer service. ✖

NOTE:
NOTCH REQUIRED AT TOP OF VERTICALS AND JAMBS FOR CAN SYSTEM INSTALLATIONS TYPICAL. PLEASE CONSULT WITH ARCADIA FOR ANY QUESTIONS OR CONCERNS.

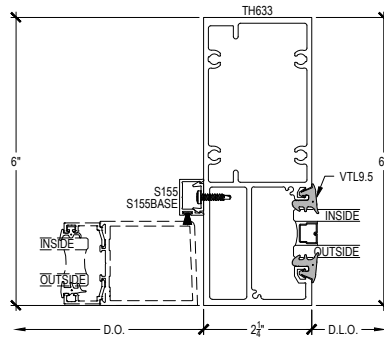


TC670 Series

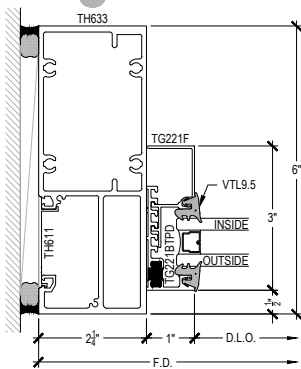
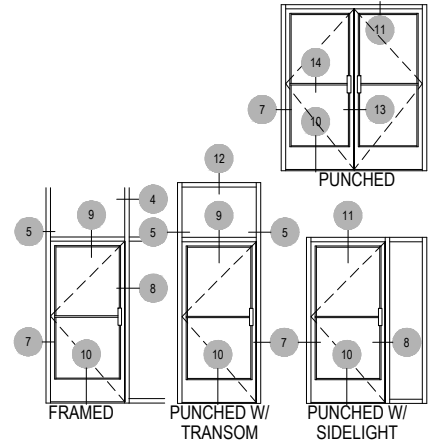
Description: 2 1/4" X 6" Captured Glazed For 1" Glass
 Function: Window Wall
 Detail: Offset Hung Doors
 Scale: 3" = 1'-0"



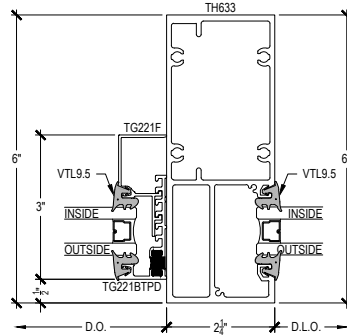
DOOR JAMB



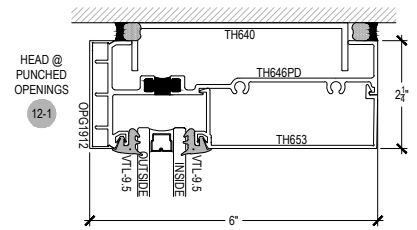
DOOR JAMB @ SIDELITE



DOOR JAMB @ TRANSOM

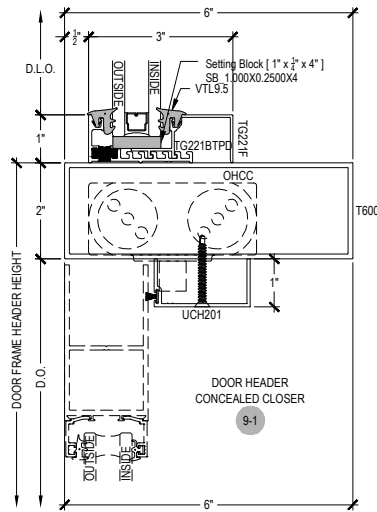


DOOR JAMB @ SIDELITE TRANSOM

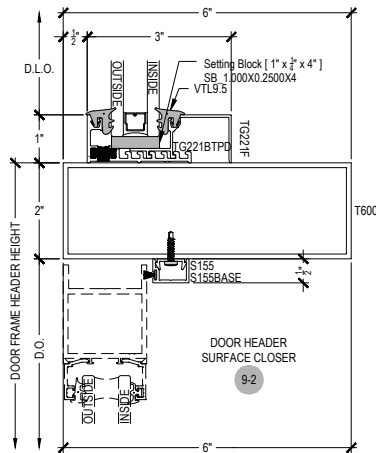


NOTE:
 NOTCH REQUIRED AT TOP OF VERTICALS AND JAMBS FOR CAN SYSTEM INSTALLATIONS TYPICAL. PLEASE CONSULT WITH ARCADIA FOR ANY QUESTIONS OR CONCERNS.

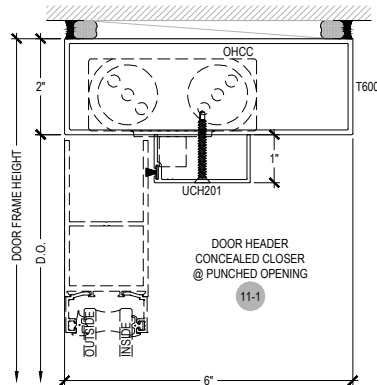
Procedures, instructions, or modifications which may affect pricing and delivery, consult Arcadia customer service.



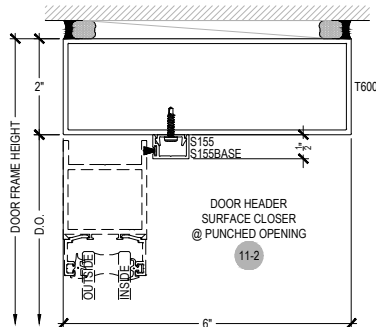
DOOR HEADER CONCEALED CLOSER



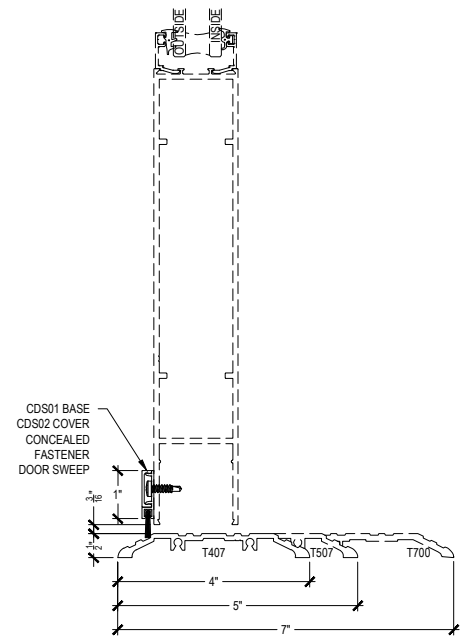
DOOR HEADER SURFACE CLOSER



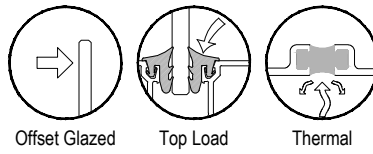
DOOR HEADER CONCEALED CLOSER @ PUNCHED OPENING



DOOR HEADER SURFACE CLOSER @ PUNCHED OPENING



OPTIONAL THRESHOLDS @ OFFSET HUNG DOOR



TC670 Series

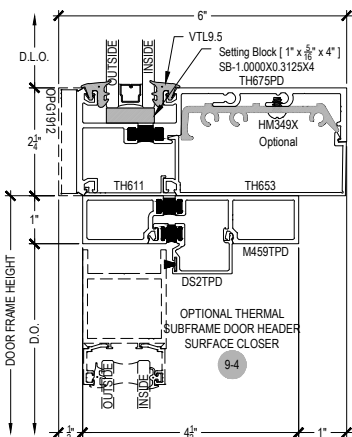
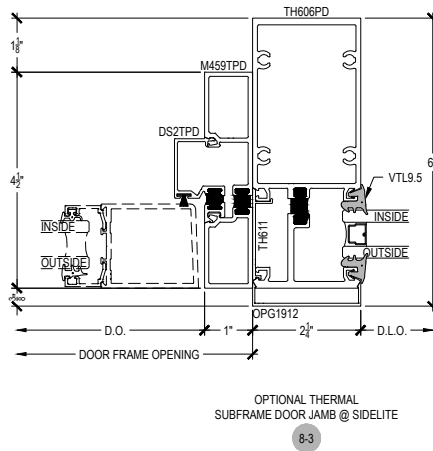
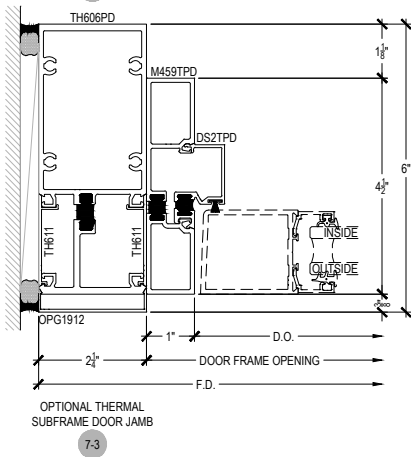
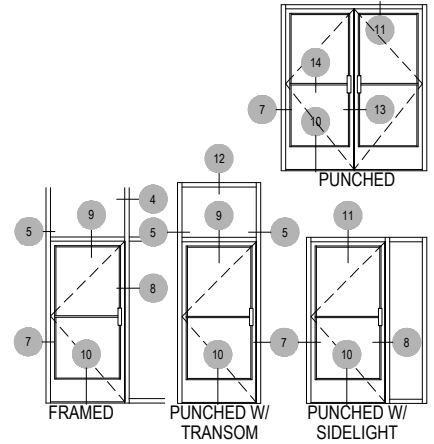
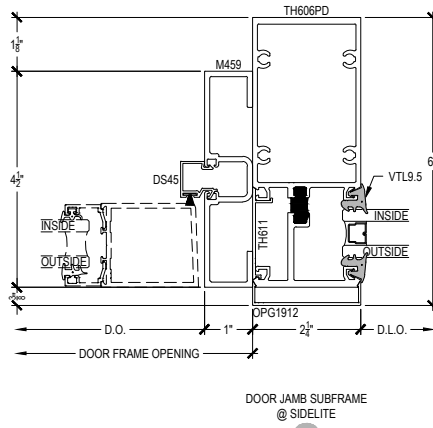
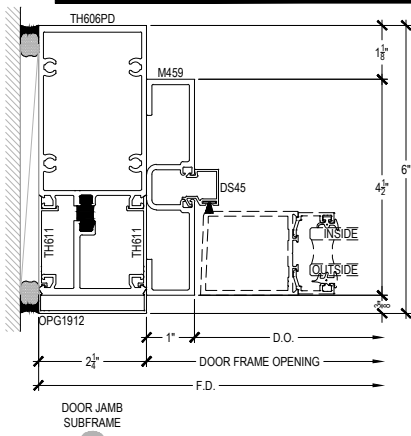
Description: 2 1/4" X 6" Captured Glazed For 1" Glass

Function: Window Wall

Detail: Offset Hung Doors & Options

Scale: 3" = 1'-0"

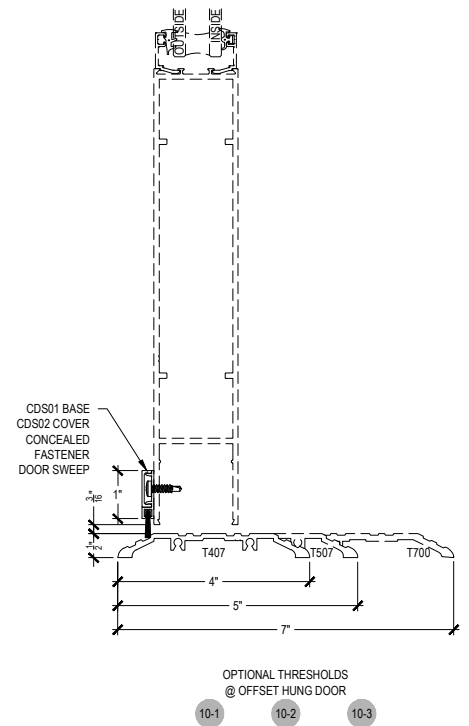
SHEET 7 OF 8

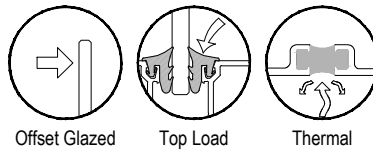


NOTE:
NOTCH REQUIRED AT TOP OF VERTICALS AND JAMBS FOR CAN SYSTEM INSTALLATIONS TYPICAL. PLEASE CONSULT WITH ARCADIA FOR ANY QUESTIONS OR CONCERNS.



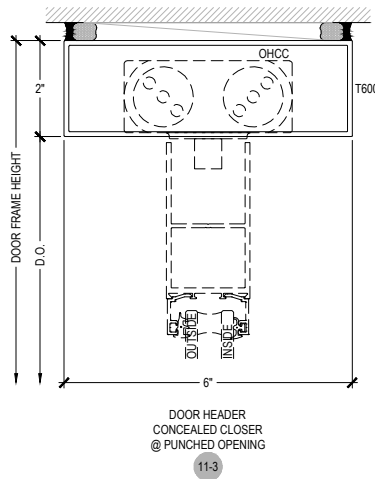
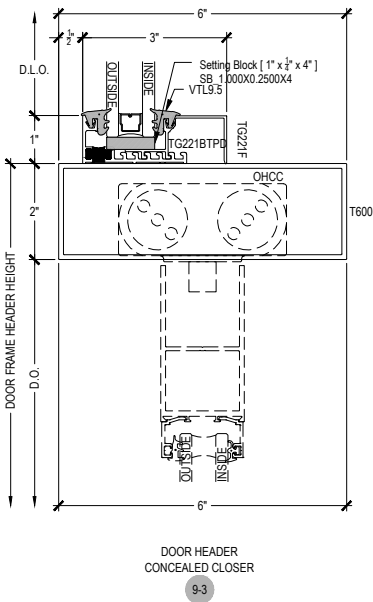
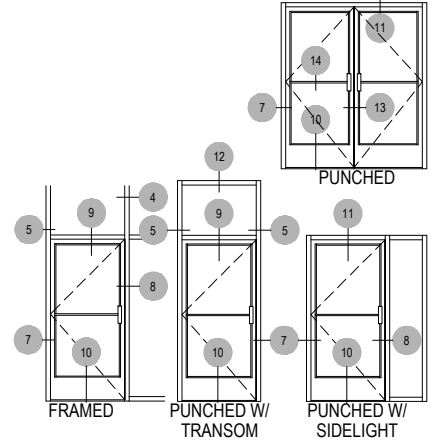
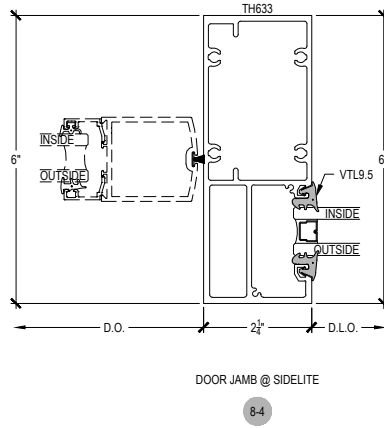
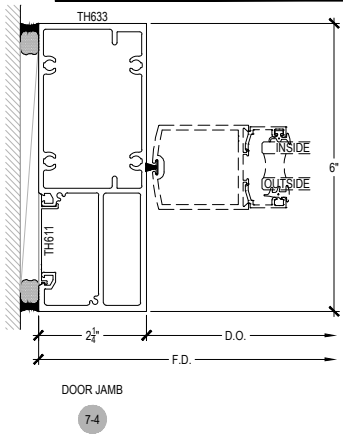
Procedures, instructions, or modifications which may affect pricing and delivery, consult Arcadia customer service.





TC670 Series

Description: 2 1/4" X 6" Captured Glazed For 1" Glass
 Function: Window Wall
 Detail: Center Hung Doors
 Scale: 3" = 1'-0"



NOTE:
 NOTCH REQUIRED AT TOP OF VERTICALS AND JAMBS
 FOR CAN SYSTEM INSTALLATIONS TYPICAL.
 PLEASE CONSULT WITH ARCADIA FOR
 ANY QUESTIONS OR CONCERNS.



Procedures, instructions, or modifications
 which may affect pricing and delivery,
 consult Arcadia customer service.



OPTIONAL THRESHOLDS
 @ CENTER HUNG DOOR
10-4

