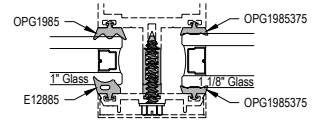
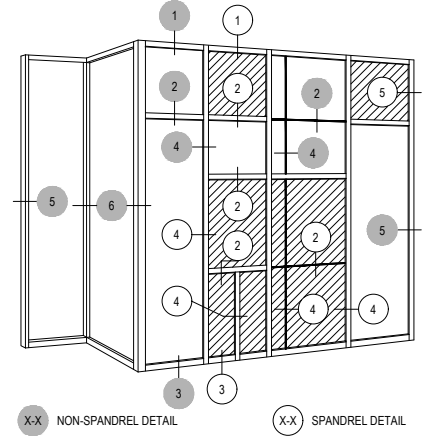
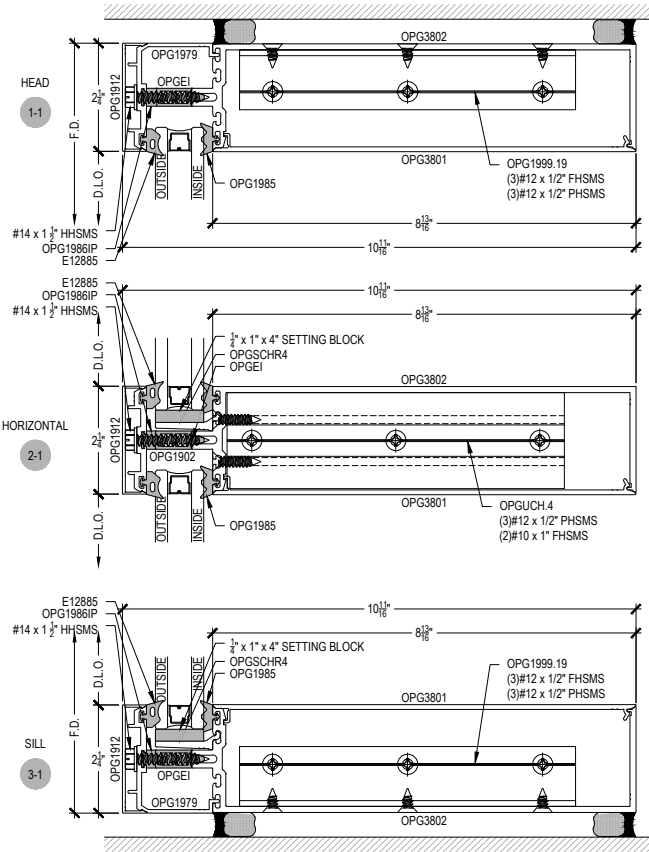


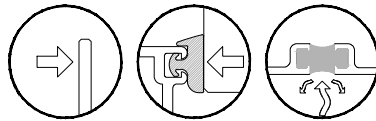
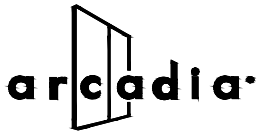
Offset Glazed Side Load Thermal  
Optional Projected Cover Caps Available

# T500-OPG3800ET Series

Description: 2 1/4" x 10 3/4" Glazed for 1" & 1-1/8" Glass  
 Function: Curtain Wall  
 Detail: Heads, Horizontals, Sills  
 Scale: 3" = 1'-0"

SHEET 1 OF 9



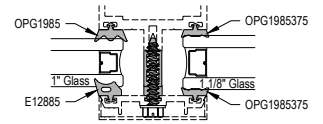
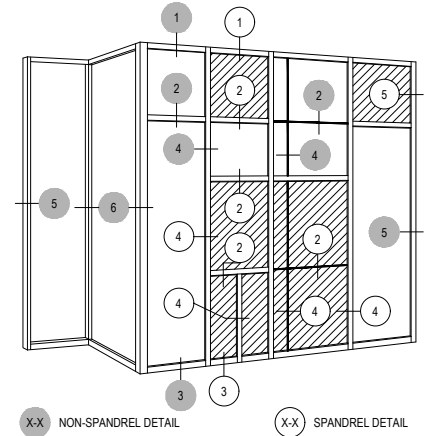
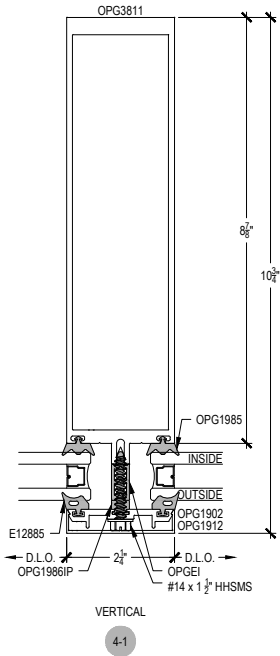


Offset Glazed  
Side Load  
Thermal  
Optional Projected Cover Caps Available

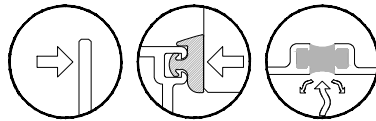
# T500-OPG3800ET Series

Description: 2 1/4" x 10 3/4" Glazed for 1" & 1-1/8" Glass  
Function: Curtain Wall  
Detail: Verticals  
Scale: 3" = 1'-0"

SHEET 2 OF 9



NOTE:  
SEE PARTS ID SHEETS FOR "F"  
& "T" ANCHOR PARTS  
NUMBERS TO EACH VERTICAL

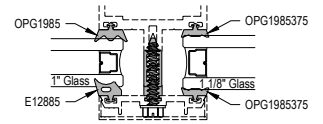
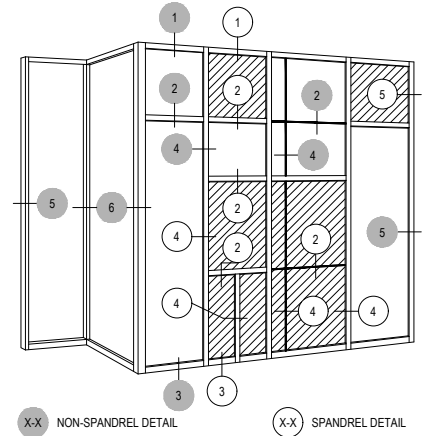
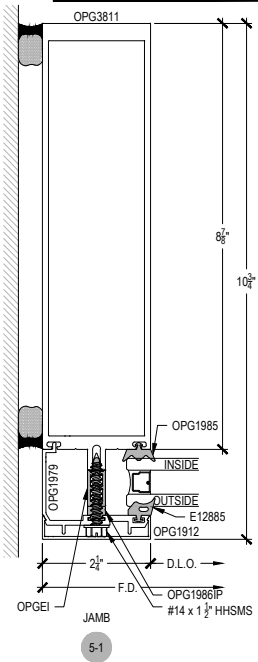


Offset Glazed Side Load Thermal  
Optional Projected Cover Caps Available

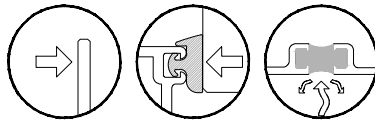
# T500-OPG3800ET Series

Description: 2 1/4" x 10 3/4" Glazed for 1" & 1-1/8" Glass  
Function: Curtain Wall  
Detail: Jamb  
Scale: 3" = 1'-0"

SHEET 3 OF 9



NOTE:  
SEE PARTS ID SHEETS FOR 'F'  
& 'T' ANCHOR PARTS  
NUMBERS TO EACH VERTICAL

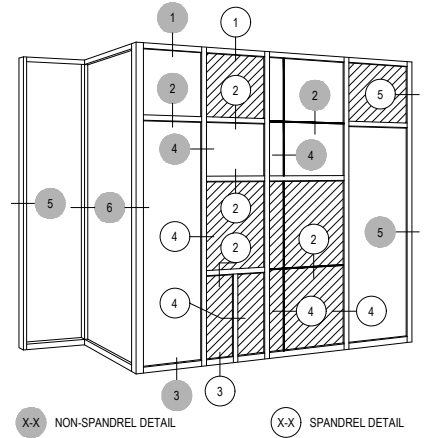
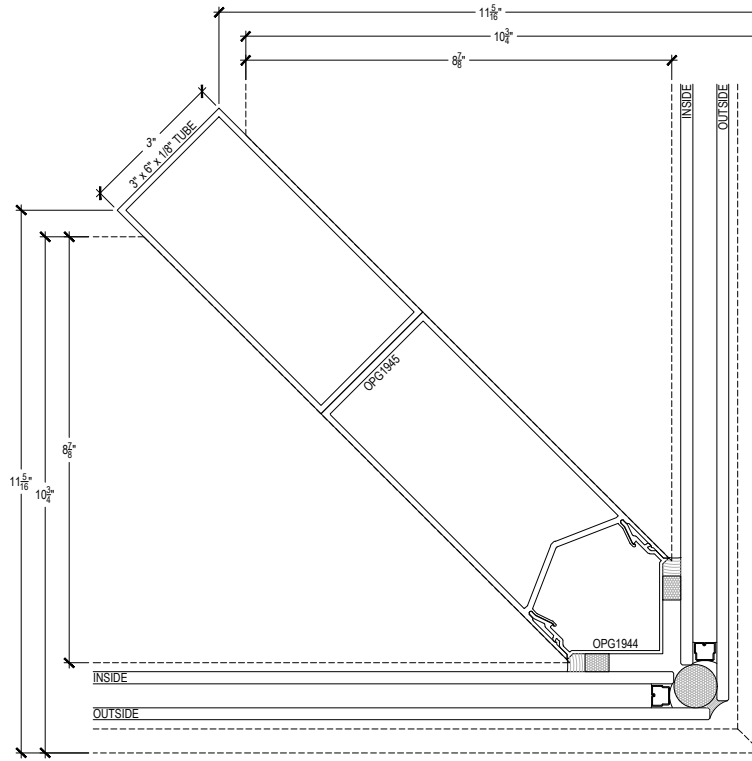


Offset Glazed  
Side Load  
Thermal  
Optional Projected Cover Caps Available

# T500-OPG3800ET Series

Description: 2 1/4" x 10 3/4" Glazed for 1" & 1-1/8" Glass  
Function: Curtain Wall  
Detail: Corners  
Scale: 3" = 1'-0"

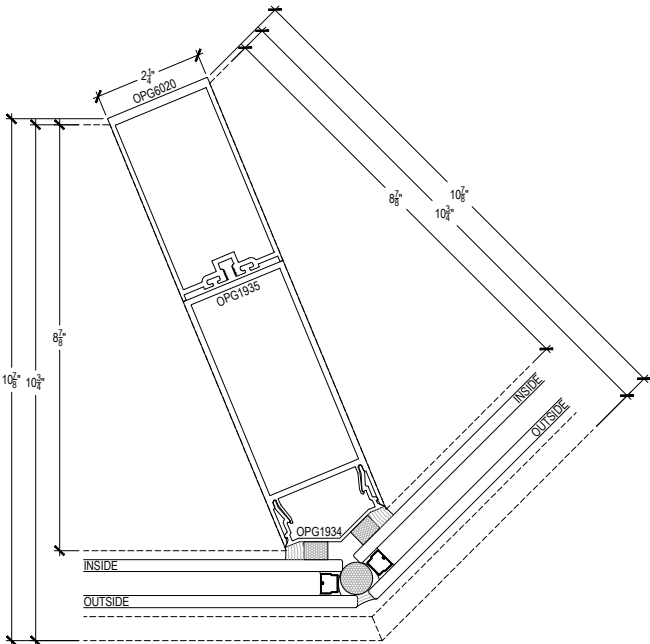
SHEET 4 OF 9



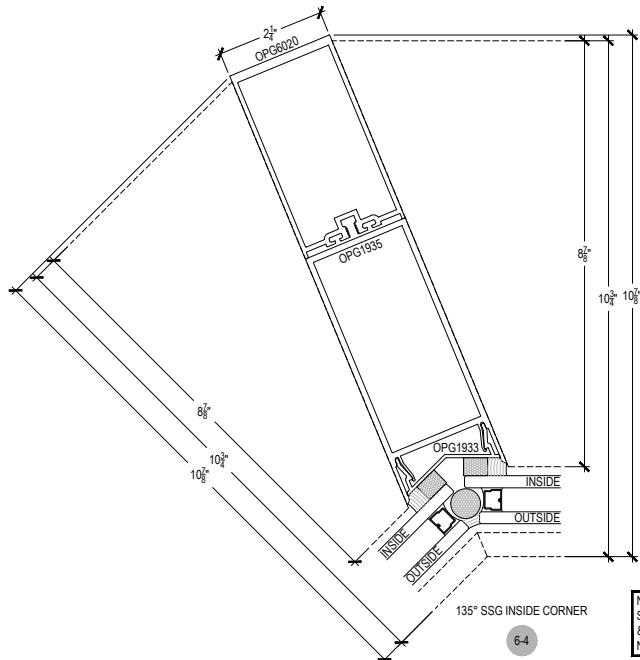
INTENTIONALLY LEFT BLANK  
NO CURRENT DETAIL

90° CAPTURED CORNER  
6-1

90° SSG OUTSIDE CORNER  
6-2

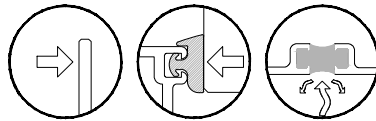


135° SSG OUTSIDE CORNER  
6-3



135° SSG INSIDE CORNER  
6-4

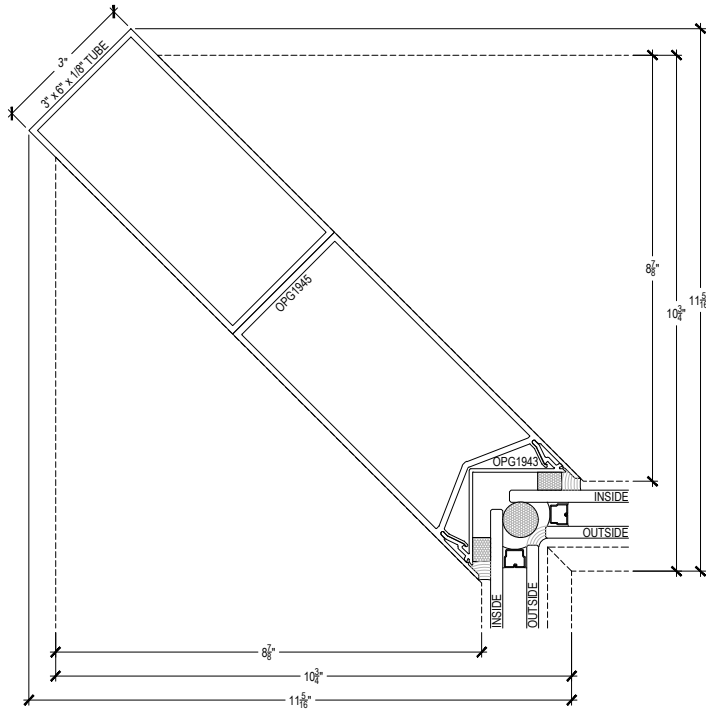
NOTE:  
SEE PARTS ID SHEETS FOR 'F'  
& 'T' ANCHOR PARTS  
NUMBERS TO EACH VERTICAL



Offset Glazed  
Side Load  
Thermal  
Optional Projected Cover Caps Available

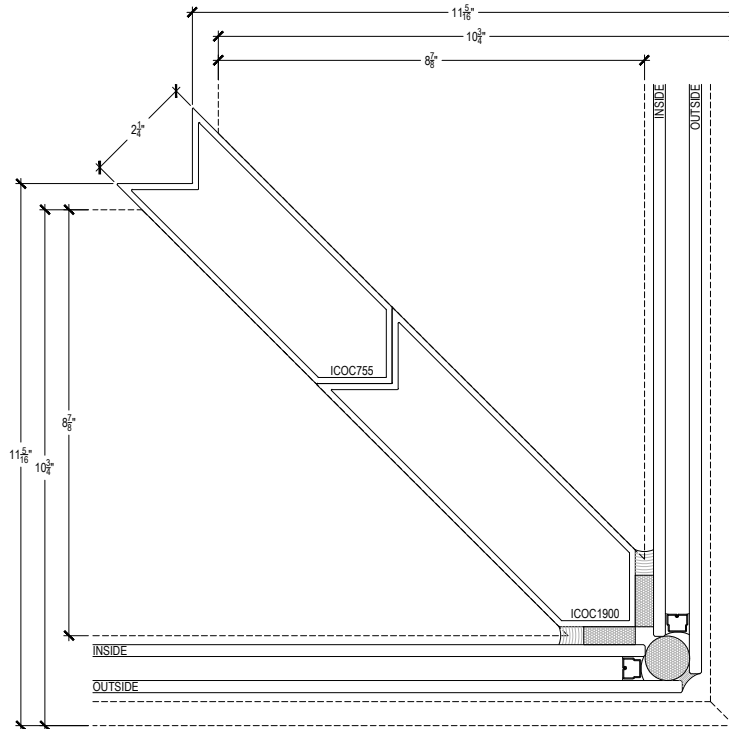
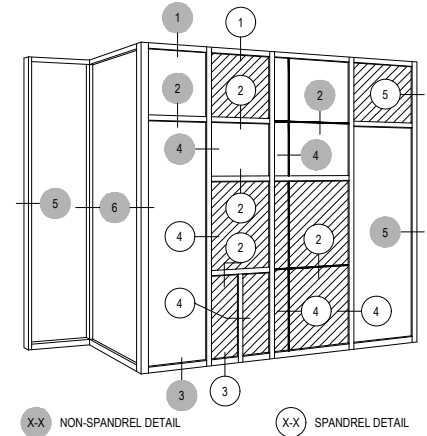
# T500-OPG3800ET Series

Description: 2 1/4" x 10 3/4" Glazed for 1" & 1-1/8" Glass  
Function: Curtain Wall  
Detail: Corners  
Scale: 3" = 1'-0"



90° SSG INSIDE CORNER

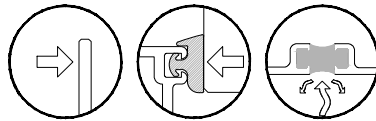
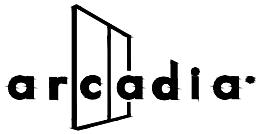
6-5



90° SSG OUTSIDE CORNER

6-6

NOTE:  
SEE PARTS ID SHEETS FOR "F"  
& "T" ANCHOR PARTS  
NUMBERS TO EACH VERTICAL



Offset Glazed    Side Load    Thermal  
Optional Projected Cover Caps Available

# T500-OPG3800ET Series

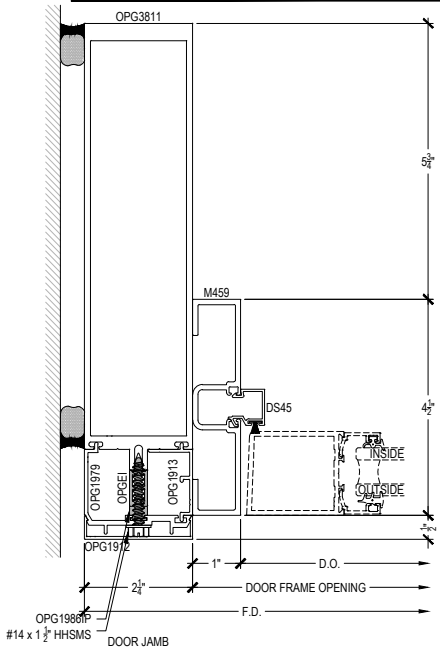
Description: 2 1/4" x 10 3/4" Glazed for 1" & 1-1/8" Glass

Function: Curtain Wall

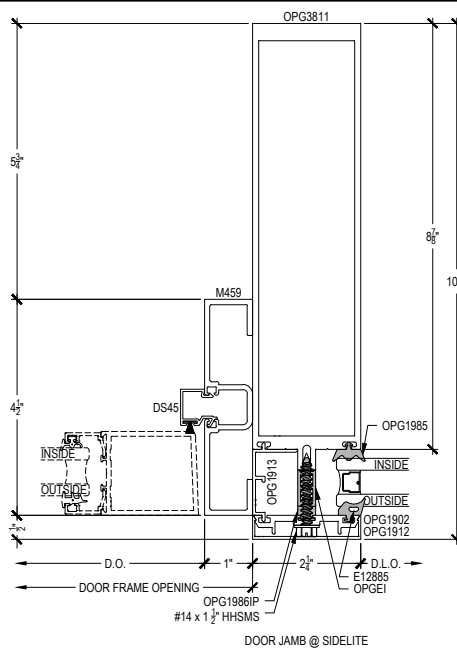
Detail: Offset Hung Doors

Scale: 3" = 1'-0"

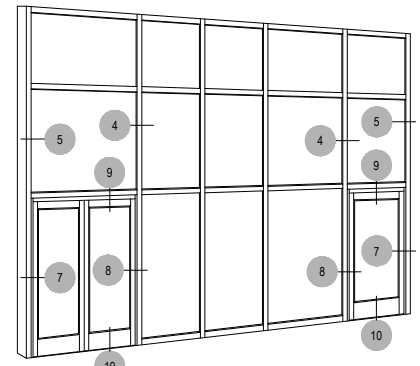
SHEET 6 OF 9



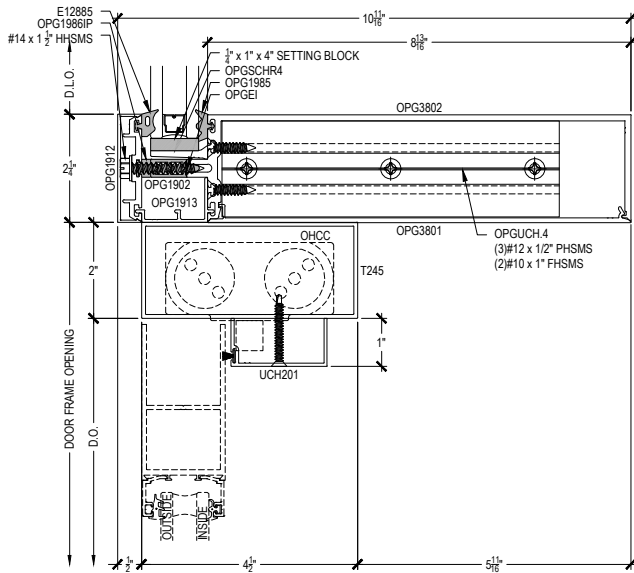
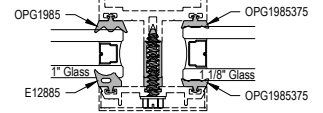
7-1



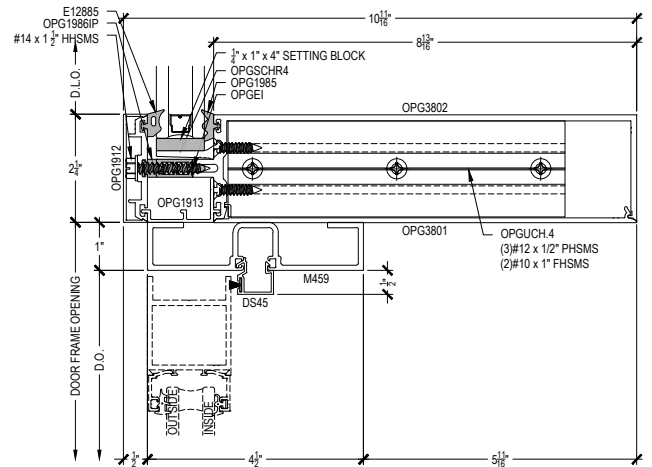
8-1



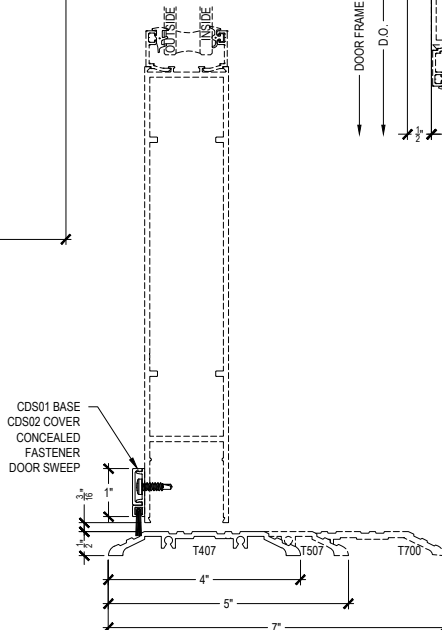
(X-X) NON-SPANDREL DETAIL    (X-X) SPANDREL DETAIL



9-1



9-2

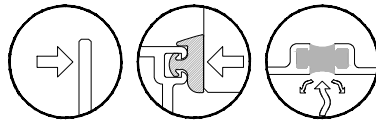
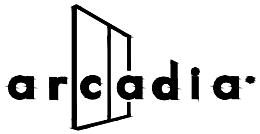


OPTIONAL THRESHOLDS @ OFFSET HUNG DOOR  
10-1    10-2    10-3

NOTE:  
TYPICAL VERTICALS &  
HORIZONTALS SHOWN IN  
DOOR DETAILS. OPTIONAL  
TO CHANGE OUT FOR  
PROJECT SPECIFIC NEEDS.

NOTE:  
SEE PARTS ID SHEETS FOR "F"  
& "T" ANCHOR PARTS

NOTE:  
FOR ALL DOOR OPTIONS SEE  
THE ENTRANCE SECTION OF  
ARCADIA, INC. WEBSITE.



Offset Glazed    Side Load    Thermal  
Optional Projected Cover Caps Available

# T500-OPG3800ET Series

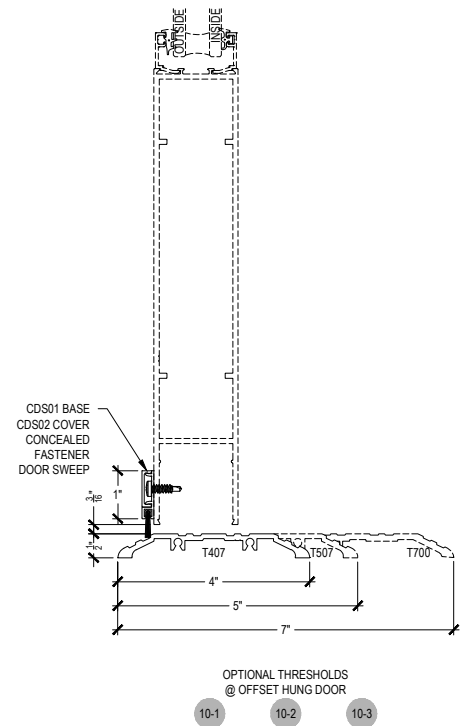
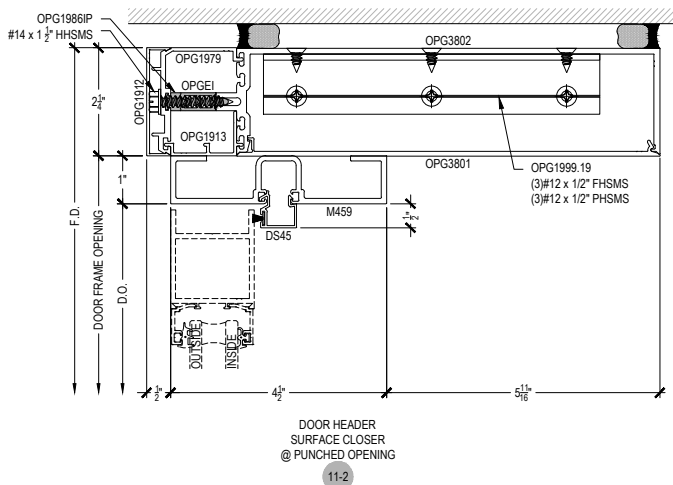
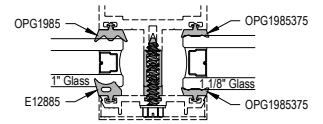
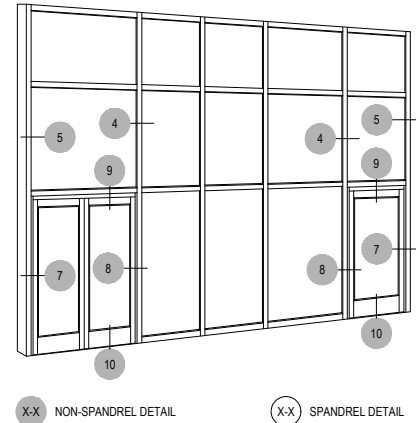
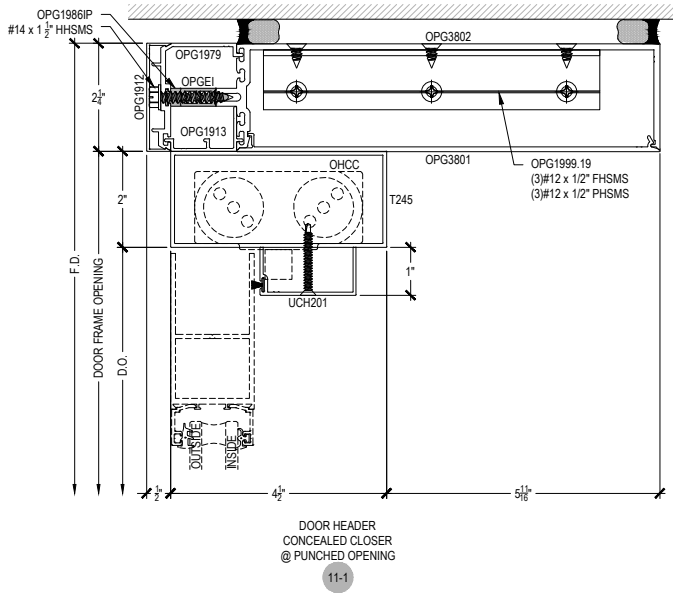
Description: 2 1/4" x 10 3/4" Glazed for 1" & 1-1/8" Glass

Function: Curtain Wall

Detail: Offset Hung Doors

Scale: 3" = 1'-0"

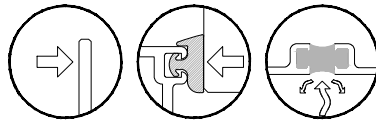
SHEET 7 OF 9



NOTE:  
TYPICAL VERTICALS &  
HORIZONTALS SHOWN IN  
DOOR DETAILS. OPTIONAL  
TO CHANGE OUT FOR  
PROJECT SPECIFIC NEEDS.

NOTE:  
SEE PARTS ID SHEETS FOR "F"  
& "T" ANCHOR PARTS  
NUMBERS TO EACH VERTICAL.

NOTE:  
FOR ALL DOOR OPTIONS SEE  
THE ENTRANCE SECTION OF  
ARCADIA, INC. WEBSITE.

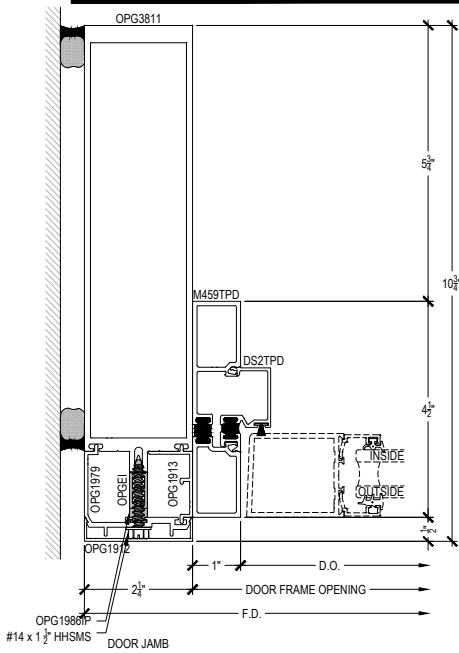


Offset Glazed Side Load Thermal  
Optional Projected Cover Caps Available

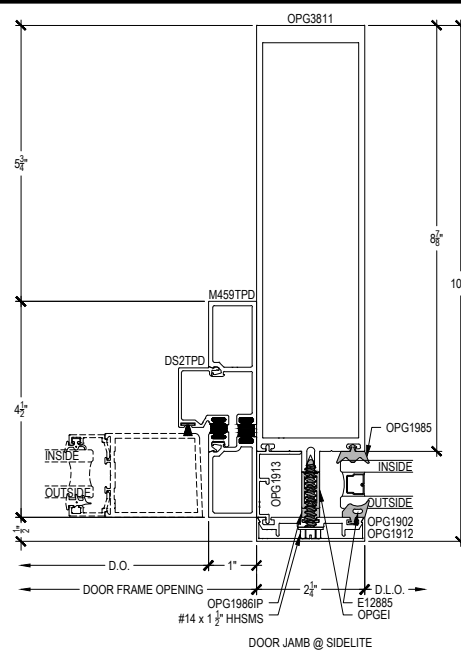
# T500-OPG3800ET Series

Description: 2 1/4" x 10 3/4" Glazed for 1" & 1-1/8" Glass  
Function: Curtain Wall  
Detail: Offset Hung Doors & Options  
Scale: 3" = 1'-0"

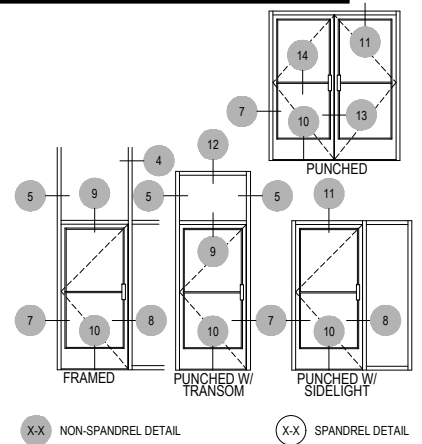
SHEET 8 OF 9



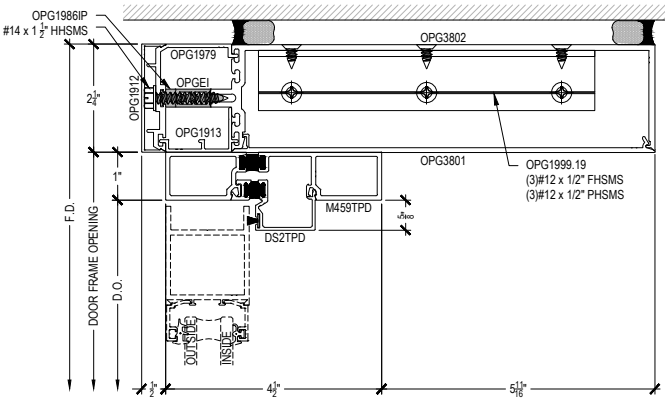
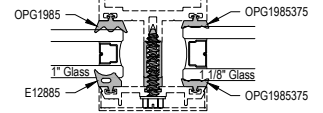
7-3



8-3

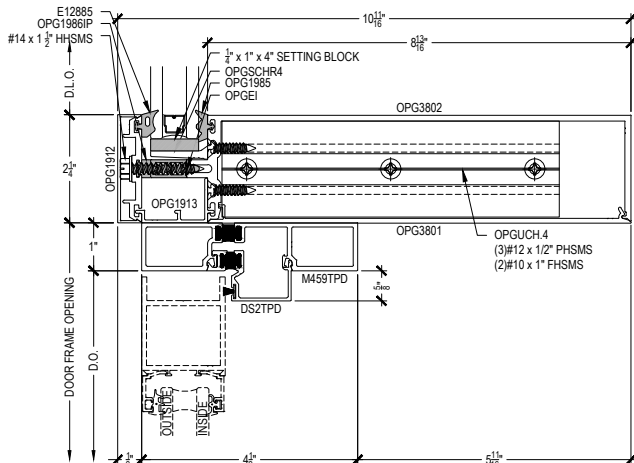


X-X NON-SPANDREL DETAIL X-X SPANDREL DETAIL



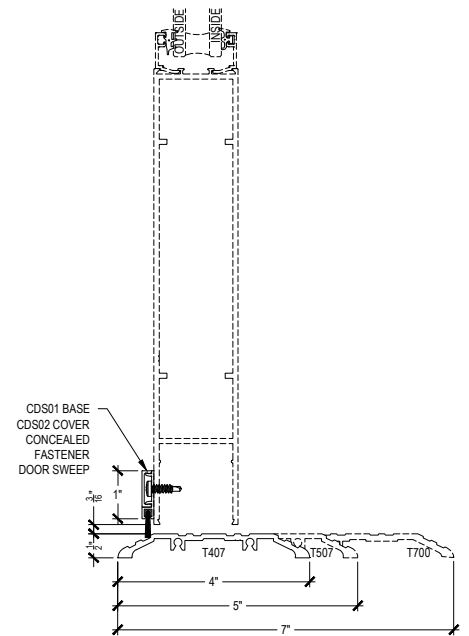
OPTIONAL THERMAL  
SUBFRAME DOOR HEADER  
SURFACE CLOSER @ PUNCHED OPENING

11-4



OPTIONAL THERMAL  
SUBFRAME DOOR HEADER  
SURFACE CLOSER

9-4



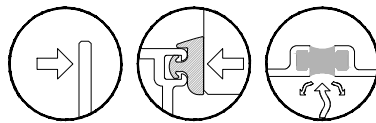
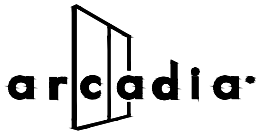
10-1 10-2 10-3

NOTE:  
TYPICAL VERTICALS &  
HORIZONTALS SHOWN IN  
DOOR DETAILS. OPTIONAL  
TO CHANGE OUT FOR  
PROJECT SPECIFIC NEEDS.

NOTE:  
SEE PARTS ID SHEETS FOR "F"  
& "T" ANCHOR PARTS

NOTE:  
FOR ALL DOOR OPTIONS SEE  
THE ENTRANCE SECTION OF  
ARCADIA, INC. WEBSITE.





Offset Glazed Side Load Thermal  
Optional Projected Cover Caps Available

# T500-OPG3800ET Series

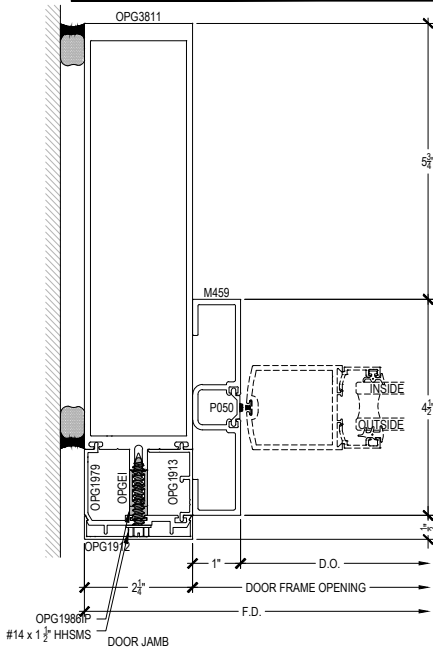
Description: 2 1/4" x 10 3/4" Glazed for 1" & 1-1/8" Glass

Function: Curtain Wall

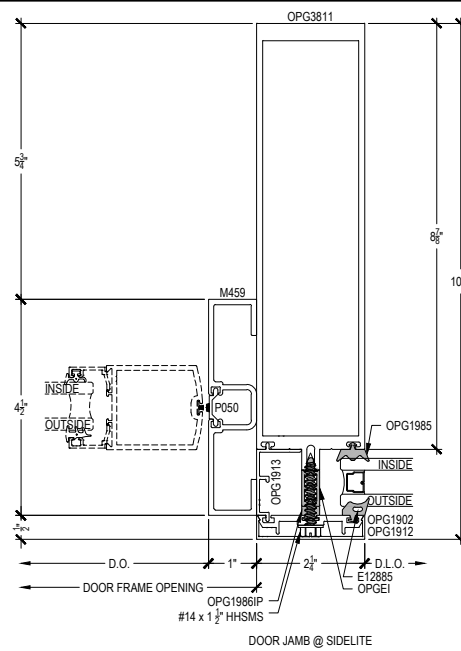
Detail: Center Hung Doors

Scale: 3" = 1'-0"

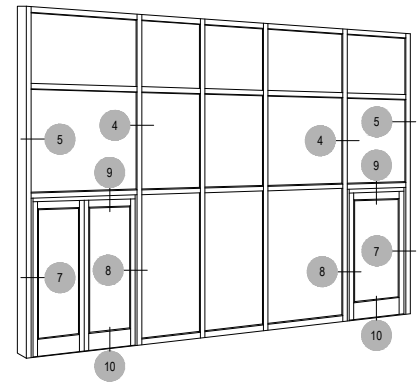
SHEET 9 OF 9



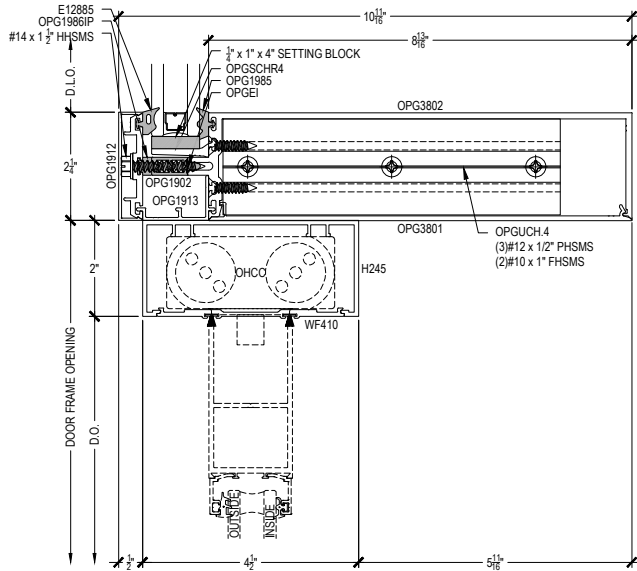
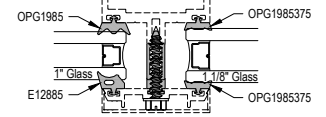
7-2



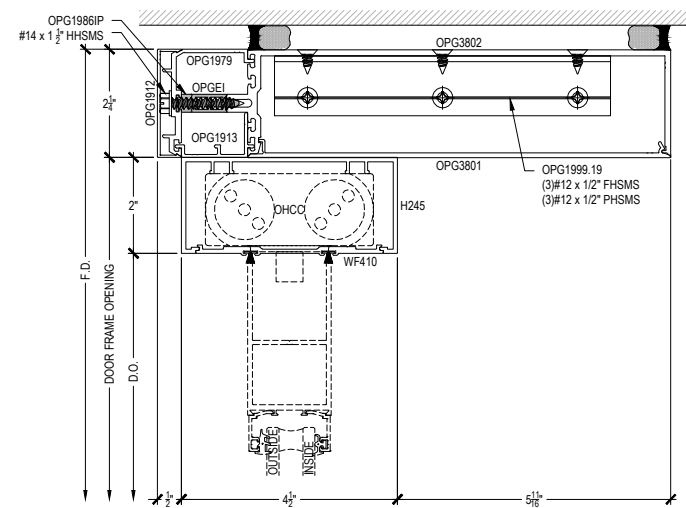
8-2



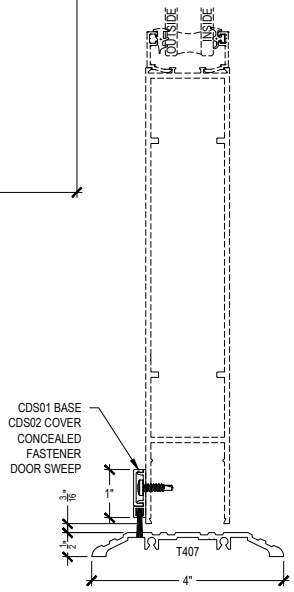
X-X NON-SPANDREL DETAIL X-X SPANDREL DETAIL



9-3



11-3



10-4

NOTE:  
TYPICAL VERTICALS &  
HORIZONTALS SHOWN IN  
DOOR DETAILS. OPTIONAL  
TO CHANGE OUT FOR  
PROJECT SPECIFIC NEEDS.

NOTE:  
SEE PARTS ID SHEETS FOR "F"  
& "T" ANCHOR PARTS

NOTE:  
FOR ALL DOOR OPTIONS SEE  
THE ENTRANCE SECTION OF  
ARCADIA, INC. WEBSITE.