

AFG451DT Series

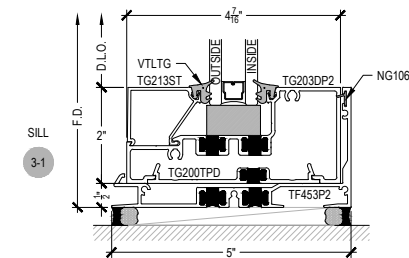
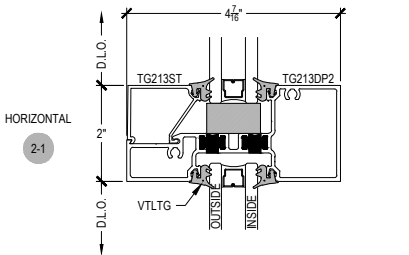
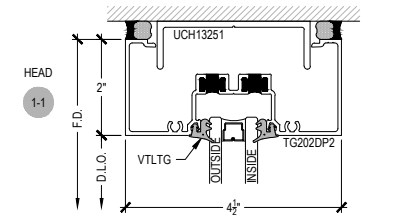
Description: 2" x 4 1/2" Center Glazed for 1/4" - 1-1/8" Glass

Function: Storefront

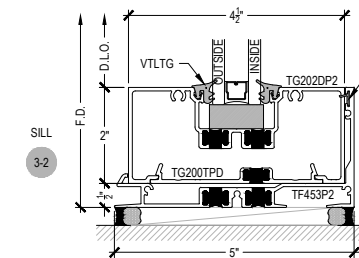
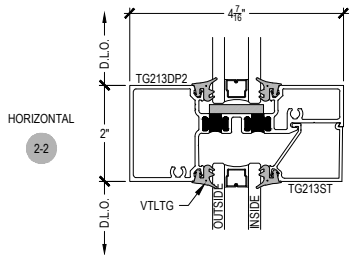
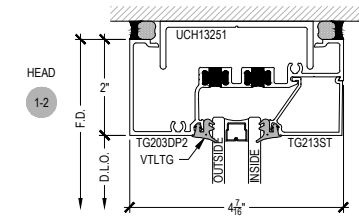
Detail: Heads, Horizontals, Sills

Scale: 3" = 1'-0"

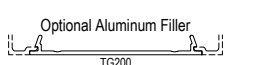
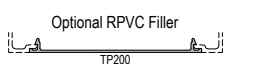
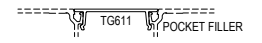
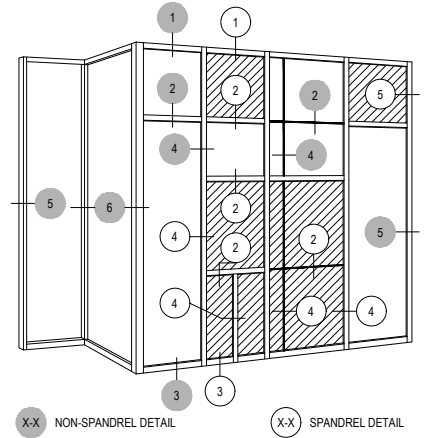
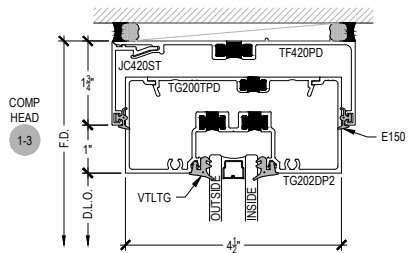
SHEET 1 OF 7

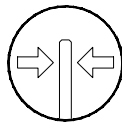


SCREW SPLINE
OUTSIDE SET

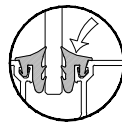


SCREW SPLINE
INSIDE SET

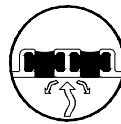




Center Glazed



Top Load



Double Thermal

AFG451DT Series

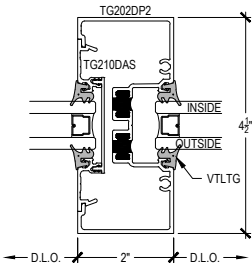
Description: 2" x 4 1/2" Center Glazed for 1/4" - 1-1/8" Glass

Function: Storefront

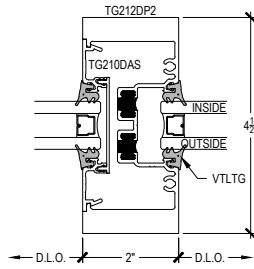
Detail: Verticals

Scale: 3" = 1'-0"

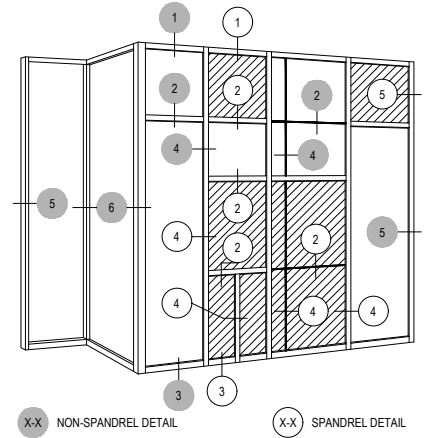
SHEET 2 OF 7



VERTICAL
4-1

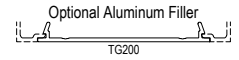
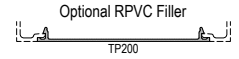
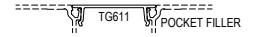


HEAVY WALL
VERTICAL
4-2

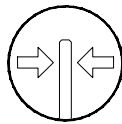


X-X NON-SPANDEL DETAIL

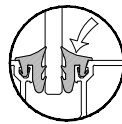
X-X SPANDEL DETAIL



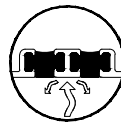
NOTE:
SEE PARTS ID SHEETS FOR "F"
& "T" ANCHOR PARTS
NUMBERS TO EACH VERTICAL



Center Glazed



Top Load



Double Thermal

AFG451DT Series

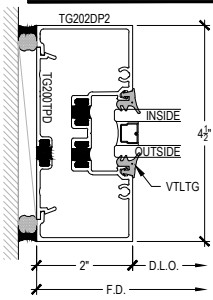
Description: 2" x 4 1/2" Center Glazed for 1/4" - 1-1/8" Glass

Function: Storefront

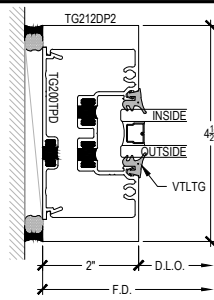
Detail: Jamb

Scale: 3" = 1'-0"

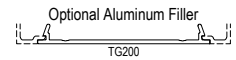
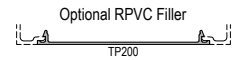
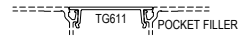
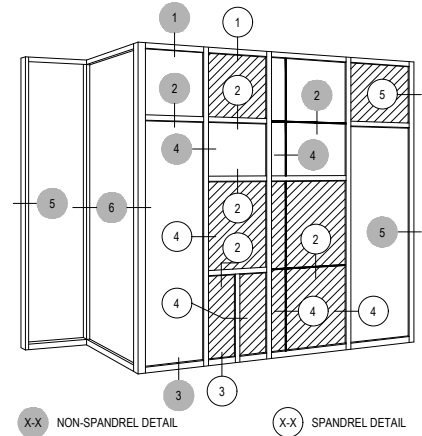
SHEET 3 OF 7



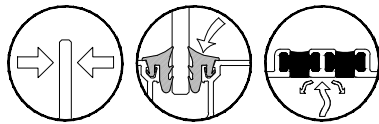
JAMB
5-1



HEAVY WALL
JAMB
5-2



NOTE:
SEE PARTS ID SHEETS FOR "F"
& "T" ANCHOR PARTS
NUMBERS TO EACH VERTICAL



Center Glazed

Top Load

Double Thermal

AFG451DT Series

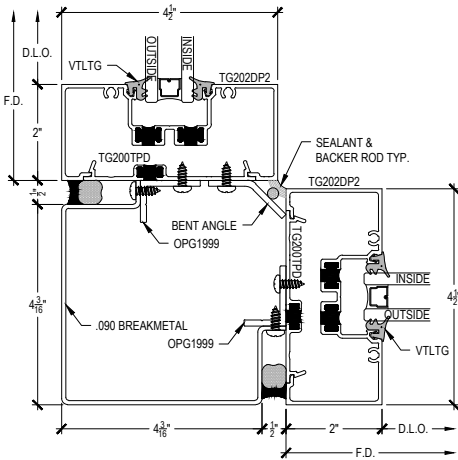
Description: 2" x 4 1/2" Center Glazed for 1/4" - 1-1/8" Glass

Function: Storefront

Detail: Corners

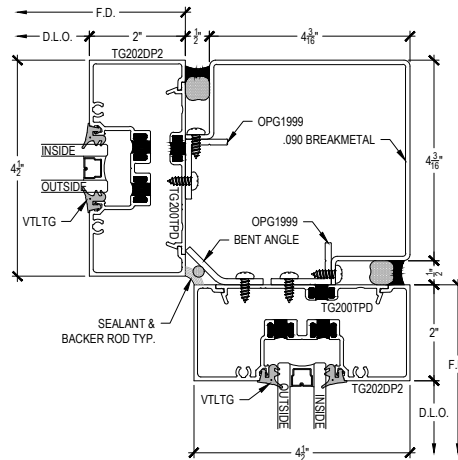
Scale: 3" = 1'-0"

SHEET 4 OF 7



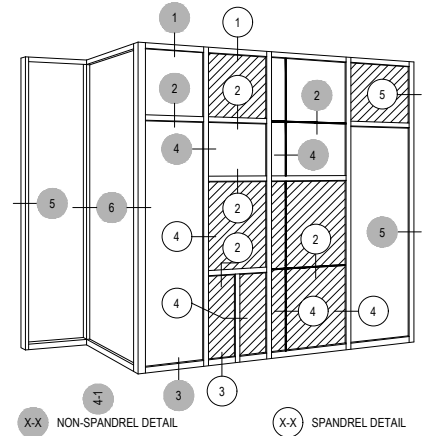
90° OUTSIDE CORNER

6-1



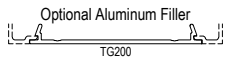
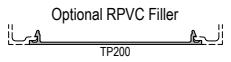
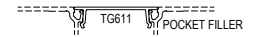
90° INSIDE CORNER

6-2

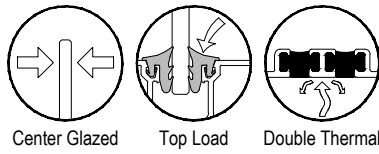


X-X NON-SPANDREL DETAIL

X-X SPANDREL DETAIL



NOTE:
SEE PARTS ID SHEETS FOR "F"
& "T" ANCHOR PARTS
NUMBERS TO EACH VERTICAL



Center Glazed

Top Load

Double Thermal

AFG451DT Series

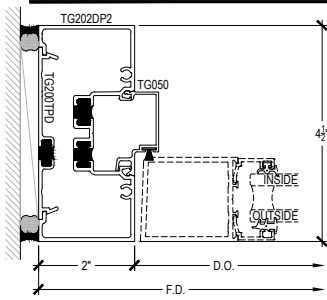
Description: 2" x 4 1/2" Center Glazed for 1/4" - 1-1/8" Glass

Function: Storefront

Detail: Offset Hung Doors

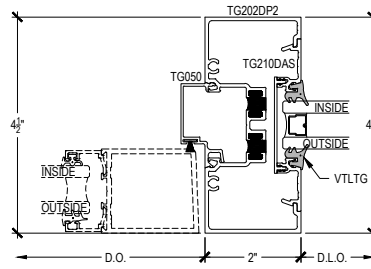
Scale: 3" = 1'-0"

SHEET 5 OF 7



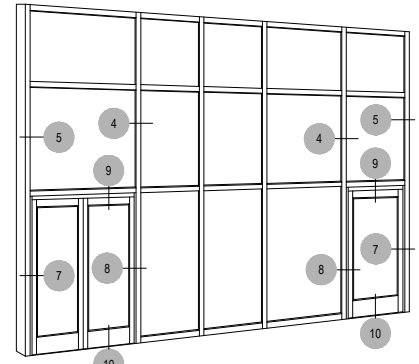
DOOR JAMB

7-1



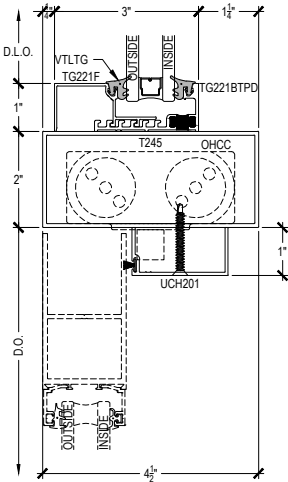
DOOR JAMB @ SIDELITE

8-1



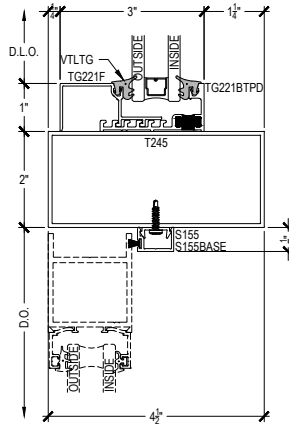
X-X NON-SPANDREL DETAIL

X-X SPANDREL DETAIL



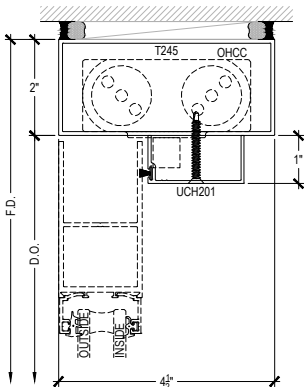
DOOR HEADER
CONCEALED CLOSER

9-1



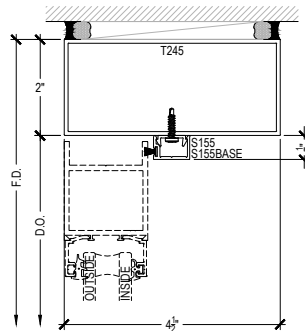
DOOR HEADER
SURFACE CLOSER

9-2



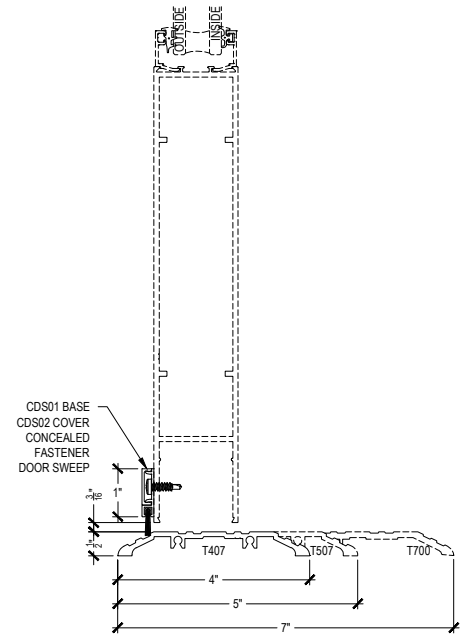
DOOR HEADER
CONCEALED CLOSER
@ PUNCHED OPENING

11-1



DOOR HEADER
SURFACE CLOSER
@ PUNCHED OPENING

11-2



OPTIONAL THRESHOLDS
@ OFFSET HUNG DOOR

10-1

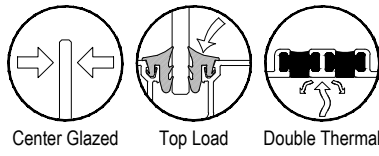
10-2

10-3

NOTE:
TYPICAL VERTICALS &
HORIZONTALS SHOWN IN
DOOR DETAILS. OPTIONAL
TO CHANGE OUT FOR
PROJECT SPECIFIC NEEDS.

NOTE:
SEE PARTS ID SHEETS FOR "F"
& "T" ANCHOR PARTS

NOTE:
FOR ALL DOOR OPTIONS SEE
THE ENTRANCE SECTION OF
ARCADIA, INC. WEBSITE.



AFG451DT Series

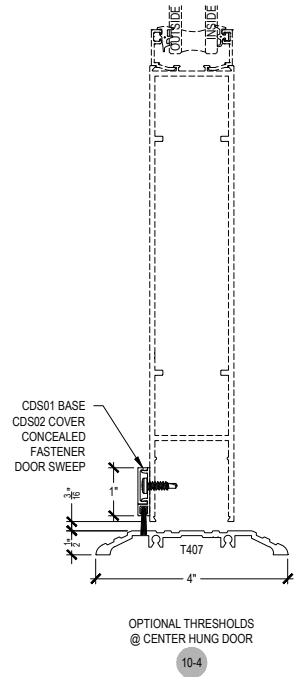
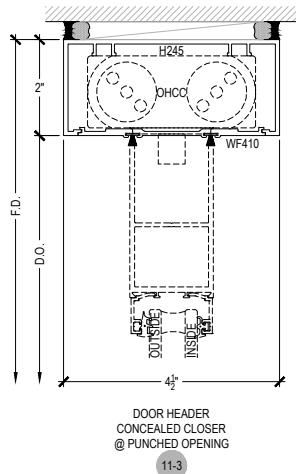
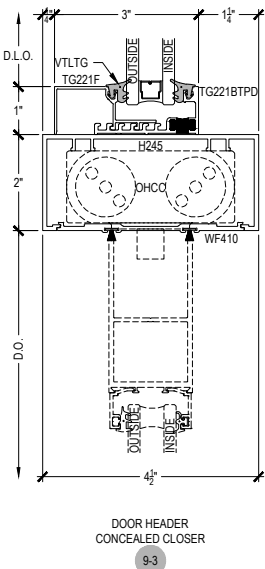
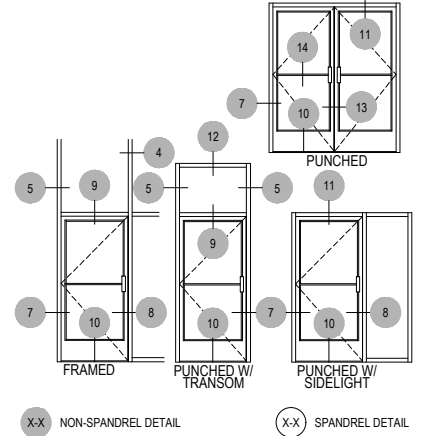
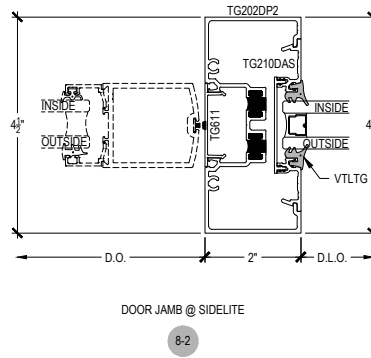
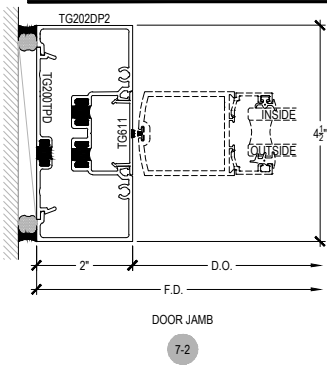
Description: 2" x 4 1/2" Center Glazed for 1/4" - 1-1/8" Glass

Function: Storefront

Detail: Center Hung Doors

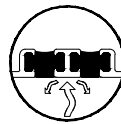
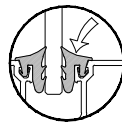
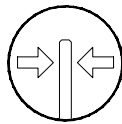
Scale: 3" = 1'-0"

SHEET 6 OF 7



NOTE:
SEE PARTS ID SHEETS FOR "F"
& "T" ANCHOR PARTS
NUMBERS TO EACH VERTICAL.

NOTE:
FOR ALL DOOR OPTIONS SEE
THE ENTRANCE SECTION OF
ARCADIA, INC. WEBSITE.



AFG451DT Series

Description: 2" x 4 1/2" Center Glazed for 1/4" - 1-1/8" Glass

Function: Storefront

Detail: Optional Glazing

Scale: 3" = 1'-0"

SHEET 7 OF 7

